

**Project team:**

**Owner:**  
AvalonBay Communities, Inc.  
2050 Main Street #1200  
Irvine, CA 92614  
Attn: Amil Gupta  
(310) 481-1286

**Architect:**  
Bassenian Lagoni Architects  
2031 Orchard Drive #100  
Newport Beach, CA 92660  
Attn: Kirk Adams  
(949) 553-9100

**Civil Engineer:**  
Kimley-Horn  
660 S. Figueroa Street, Suite 2050  
Los Angeles, CA 90017  
Attn: Michael Choi  
(213) 261-4038

**Landscape Architect:**  
EPT Design  
401 Glenneyre Street, First Floor  
Laguna Beach, CA 92651  
Attn: Scott Goodman  
(949) 502-4500

**Structural Engineer:**  
VCA Structural  
1845 W. Orangewood Avenue., Suite 200  
Orange CA 92868  
Attn: Brett Kaufman  
(714) 978-9780

**Mechanical Engineer:**  
Multi Mechanical  
469 E. Blaine Street  
Corona, CA 92879  
Attn: Brandon Abblitt  
(951) 736-6040

**Electrical Engineer:**  
RVM Engineering  
15 Peters Canyon Road  
Irvine, CA 92606  
Attn: Randy Moss  
(949) 502-4631

**Plumbing Engineer:**  
AMPAM/Parks Mechanical  
17036 S. Avalon Boulevard  
Carson, CA 90746  
Attn: Jason Parks  
(310) 835-1532

**Parking Garage Architect:**  
TRC Parkitects  
17848 Sky Park Circle, Suite D  
Irvine, CA 92614  
Attn: Ermias Stefanos  
(949) 263-8932





**Bassenian | Lagoni**  
 ARCHITECTURE • PLANNING • INTERIORS

Copyright 2016 Bassenian | Lagoni Architects

2031 Orchard Drive, Suite 100  
 Newport Beach, CA USA 92660  
 tel. +1 949 553 9100  
 fax +1 949 553 0548

# CONCEPTUAL PERSPECTIVE VIEW I - ALTERNATE DESIGN

825 S MYRTLE AVENUE

Monrovia, California

A 3.1



Note:  
 This yield study is for the purpose of estimating the maximum density of a residential product type on a site of a given configuration. If specific entitlement requirements differ from the criteria shown on the plan (such as setbacks, minimum lot sizes, street standards, retention requirements, etc.) then the actual possible density may vary substantially.



**Bassenian | Lagoni**  
ARCHITECTURE • PLANNING • INTERIORS

Copyright 2016 Bassenian | Lagoni Architects

2031 Orchard Drive, Suite 100  
Newport Beach, CA USA 92660  
tel. +1 949 553 9100  
fax +1 949 553 0548

## CONCEPTUAL PERSPECTIVE VIEW 2 - ALTERNATE DESIGN

825 S MYRTLE AVENUE

Monrovia, California

A 3.2



Note:  
This yield study is for the purpose of estimating the maximum density of a residential product type on a site of a given configuration. If specific entitlement requirements differ from the criteria shown on the plan (such as setbacks, minimum lot sizes, street standards, retention requirements, etc.) then the actual possible density may vary substantially.



A 3.3

**Bassenian | Lagoni**  
ARCHITECTURE • PLANNING • INTERIORS

Copyright 2016 Bassenian | Lagoni Architects

2031 Orchard Drive, Suite 100  
Newport Beach, CA USA 92660  
tel. +1 949 553 9100  
fax +1 949 553 0548

# CONCEPTUAL PERSPECTIVE VIEW 3 - ALTERNATE DESIGN

## 825 S MYRTLE AVENUE

Monrovia, California

**Note:**  
This yield study is for the purpose of estimating the maximum density of a residential product type on a site of a given configuration. If specific entitlement requirements differ from the criteria shown on the plan (such as setbacks, minimum lot sizes, street standards, retention requirements, etc.) then the actual possible density may vary substantially.





A 3.3a

**Bassenian | Lagoni**  
ARCHITECTURE • PLANNING • INTERIORS

Copyright 2016 Bassenian | Lagoni Architects

2031 Orchard Drive, Suite 100  
Newport Beach, CA USA 92660  
tel. +1 949 553 9100  
fax +1 949 553 0548

## CONCEPTUAL PERSPECTIVE VIEW 4 - ALTERNATE DESIGN

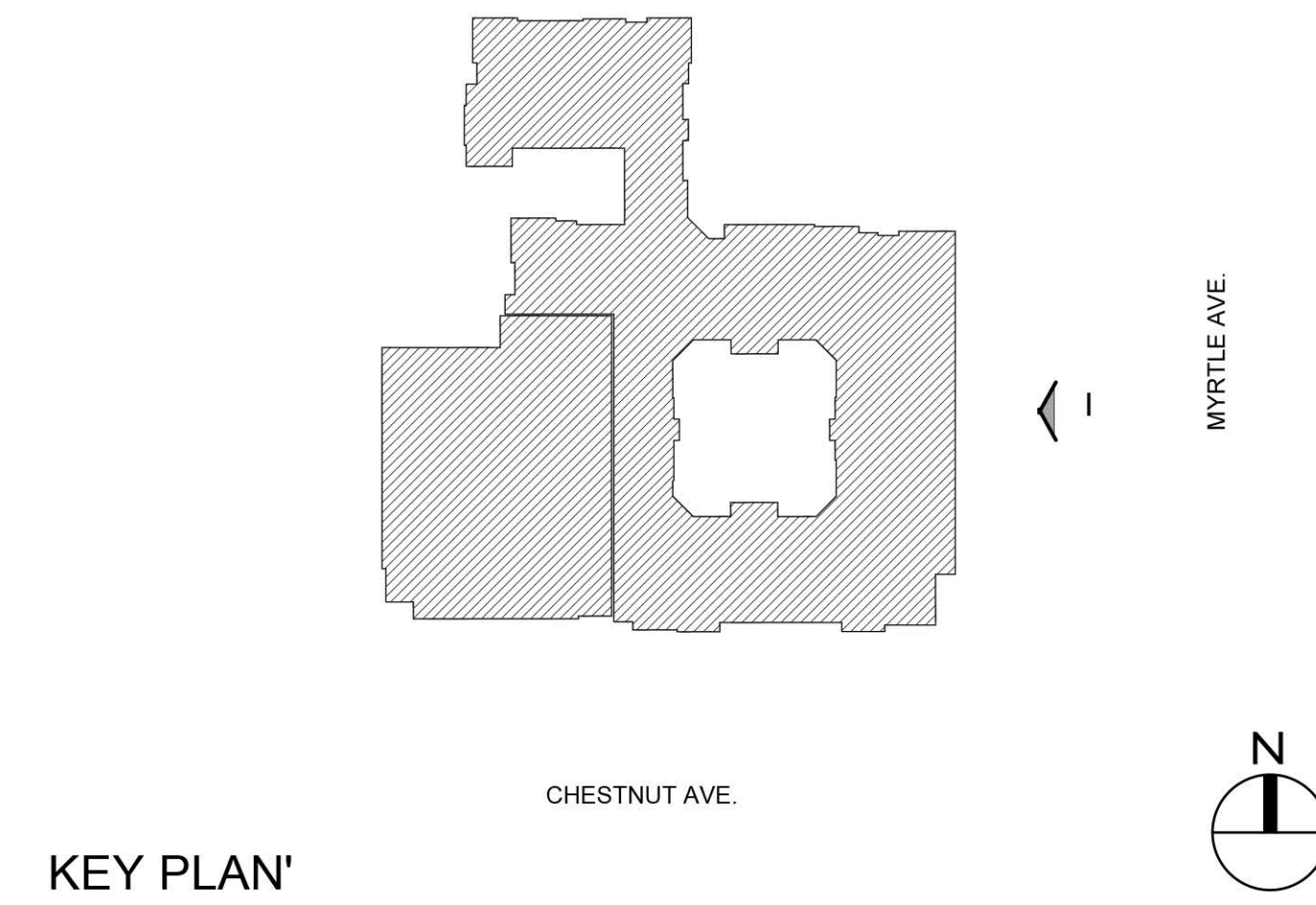
825 S MYRTLE AVENUE

Monrovia, California

Note:  
This yield study is for the purpose of estimating the maximum density of a residential product type on a site of a given configuration. If specific entitlement requirements differ from the criteria shown on the plan (such as setbacks, minimum lot sizes, street standards, retention requirements, etc.) then the actual possible density may vary substantially.



- EXTERIOR MATERIAL LEGEND**
- A. STANDING SEAM METAL ROOF
  - B. 20/30 FINE SAND FLOAT STUCCO FINISH
  - C. METAL RAILING
  - D. RECESS WINDOWS
  - E. METAL SPANDREL PANEL
  - F. METAL AWNING #1
  - G. METAL AWNING #2
  - H. DECORATIVE METAL GRID
  - J. PAINTED CONCRETE
  - K. CONCRETE SCORE LINES
  - L. PAINTED BRICK VENEER
  - M. PRECAST STONE BASE
  - N. STOREFRONT DOOR/ WINDOW
  - O. VINYL WINDOW
  - P. SMOOTH STUCCO FINISH



A 3.4

**Bassenian | Lagoni**  
ARCHITECTURE • PLANNING • INTERIORS

**BUILDING ELEVATION**  
**825 S MYRTLE AVENUE**  
Monrovia, California

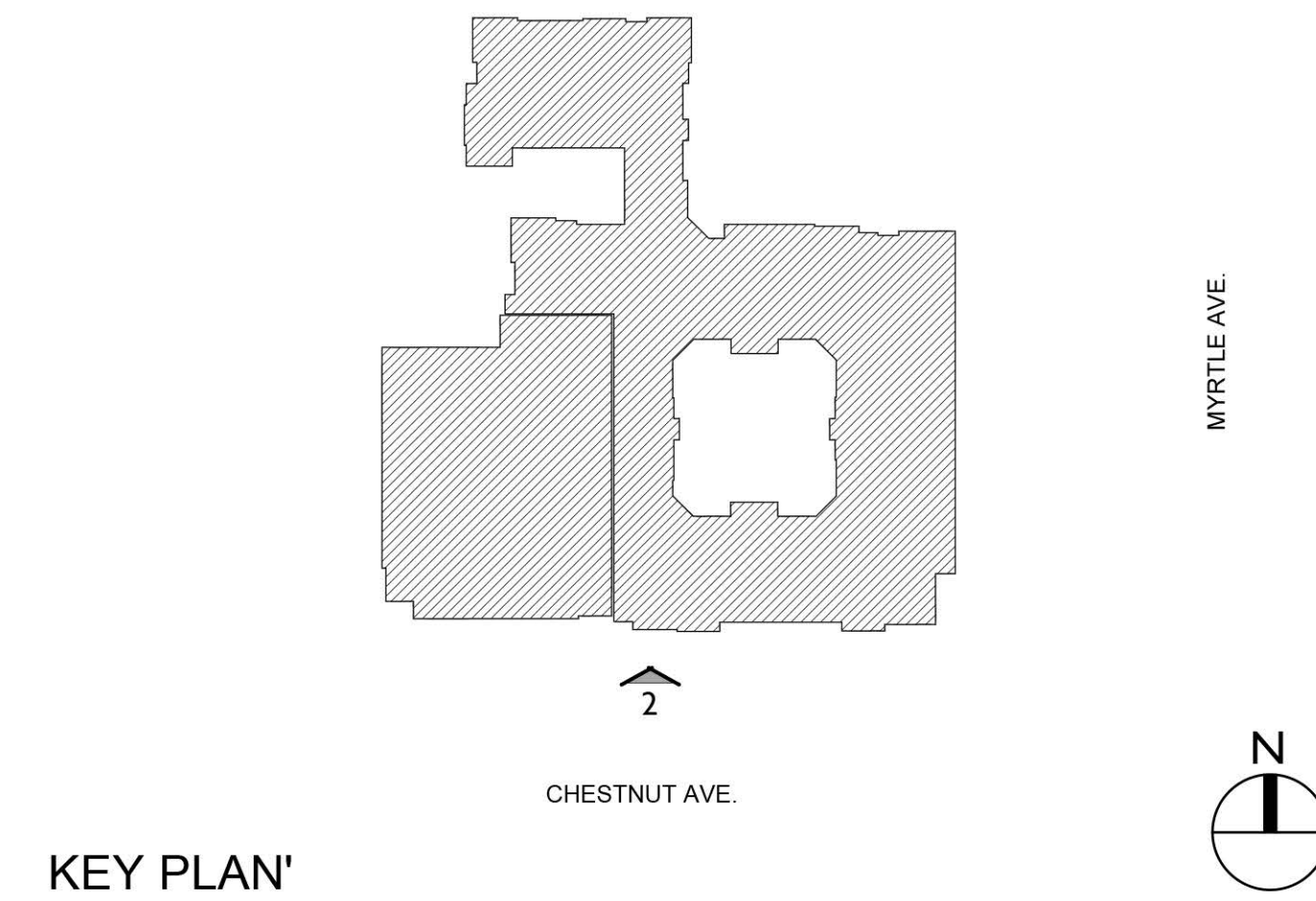
08.06.18

Copyright 2018 Bassenian | Lagoni Architects  
2031 Orchard Drive, Suite 100  
Newport Beach, CA USA 92660  
tel. +1 949 553 9100  
fax +1 949 553 0548

0 6 12 24  
SCALE: 3/32" = 1'-0" 777.16214



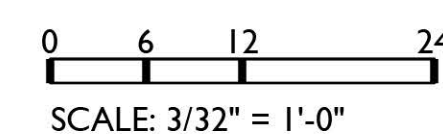
- EXTERIOR MATERIAL LEGEND**
- A. STANDING SEAM METAL ROOF
  - B. 20/30 FINE SAND FLOAT STUCCO FINISH
  - C. METAL RAILING
  - D. RECESS WINDOWS
  - E. METAL SPANDREL PANEL
  - F. METAL AWNING #1
  - G. METAL AWNING #2
  - H. DECORATIVE METAL GRID
  - J. PAINTED CONCRETE
  - K. CONCRETE SCORE LINES
  - L. PAINTED BRICK VENEER
  - M. PRECAST STONE BASE
  - N. STOREFRONT DOOR/ WINDOW
  - O. VINYL WINDOW
  - P. SMOOTH STUCCO FINISH



# BUILDING ELEVATION

825 S MYRTLE AVENUE

Monrovia, California

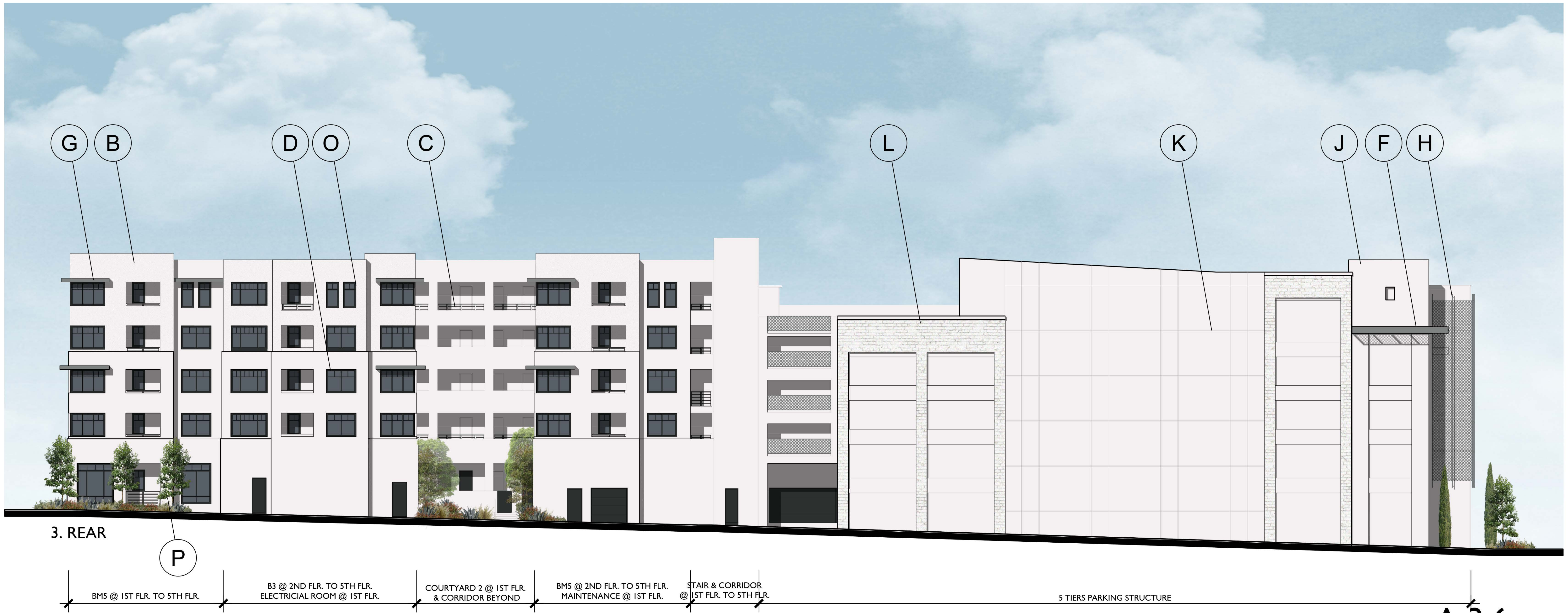
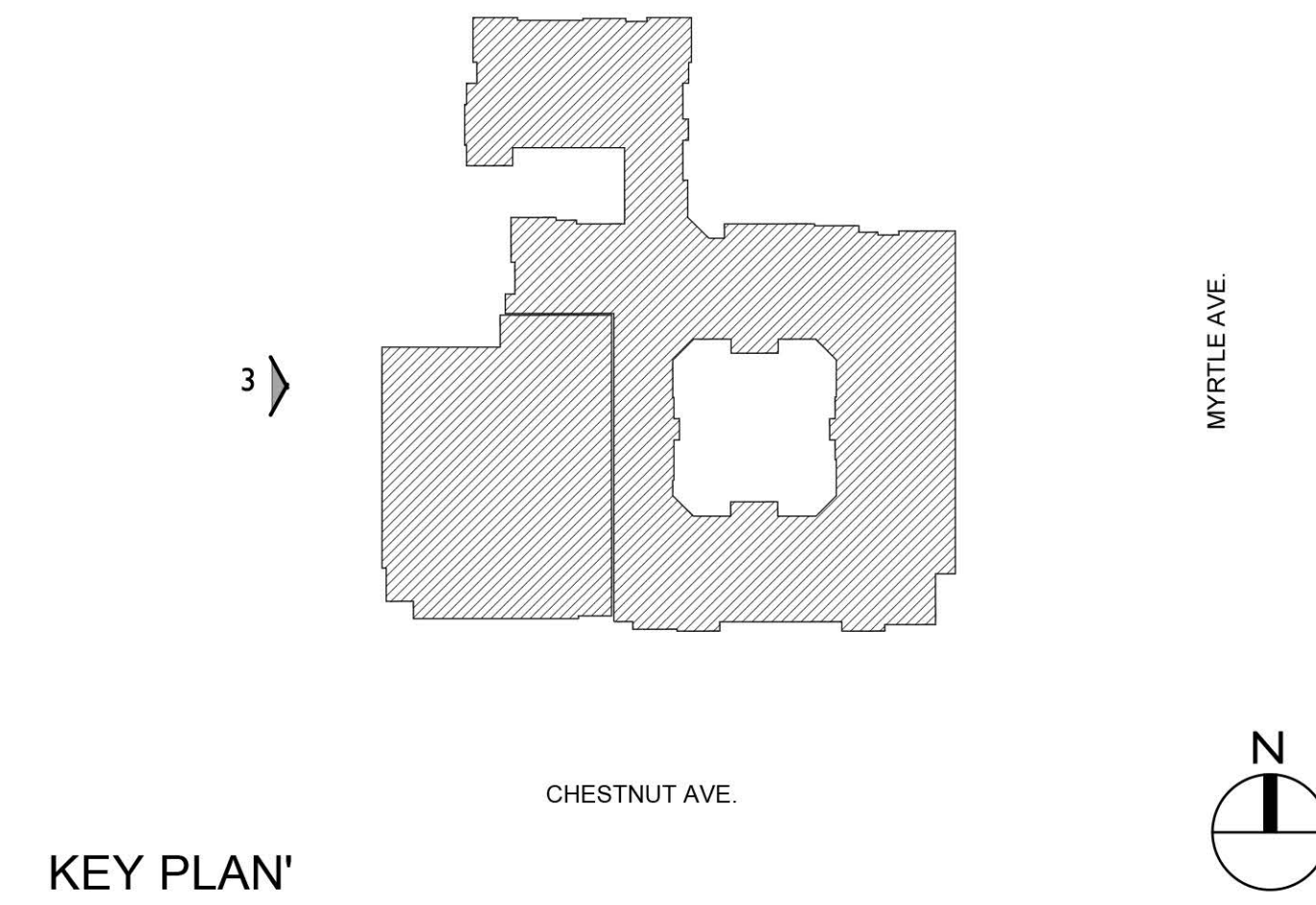


777.16214

08.06.18



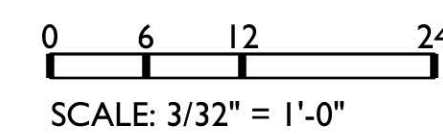
- EXTERIOR MATERIAL LEGEND**
- A. STANDING SEAM METAL ROOF
  - B. 20/30 FINE SAND FLOAT STUCCO FINISH
  - C. METAL RAILING
  - D. RECESS WINDOWS
  - E. METAL SPANDREL PANEL
  - F. METAL AWNING #1
  - G. METAL AWNING #2
  - H. DECORATIVE METAL GRID
  - J. PAINTED CONCRETE
  - K. CONCRETE SCORE LINES
  - L. PAINTED BRICK VENEER
  - M. PRECAST STONE BASE
  - N. STOREFRONT DOOR/ WINDOW
  - O. VINYL WINDOW
  - P. SMOOTH STUCCO FINISH



**BUILDING ELEVATION**

**825 S MYRTLE AVENUE**

Monrovia, California

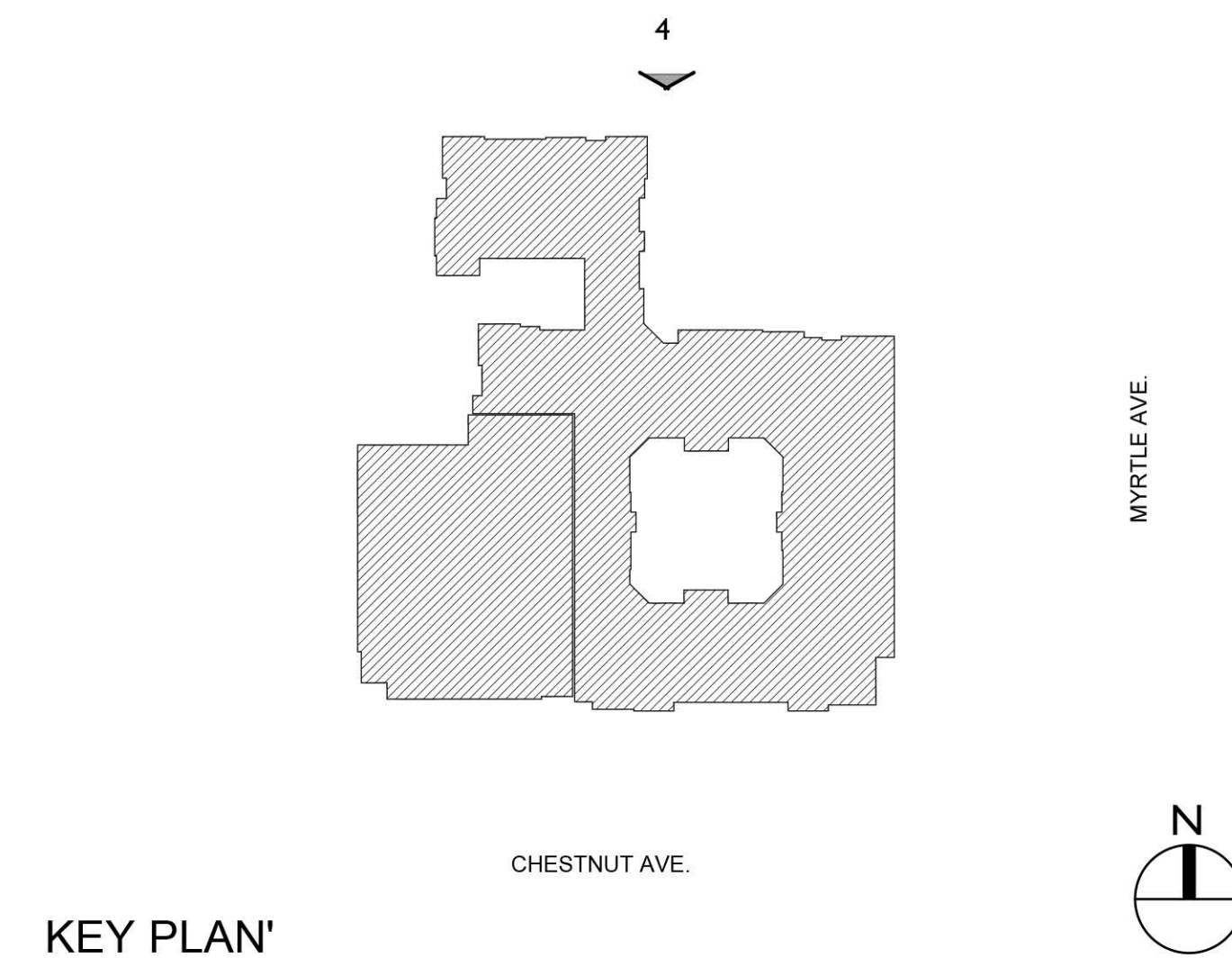


777.16214

08.06.18







- EXTERIOR MATERIAL LEGEND**
- A. STANDING SEAM METAL ROOF
  - B. 20/30 FINE SAND FLOAT STUCCO FINISH
  - C. METAL RAILING
  - D. RECESS WINDOWS
  - E. METAL SPANDREL PANEL
  - F. METAL AWNING #1
  - G. METAL AWNING #2
  - H. DECORATIVE METAL GRID
  - J. PAINTED CONCRETE
  - K. CONCRETE SCORE LINES
  - L. PAINTED BRICK VENEER
  - M. PRECAST STONE BASE
  - N. STOREFRONT DOOR/ WINDOW
  - O. VINYL WINDOW
  - P. SMOOTH STUCCO FINISH



4. RIGHT



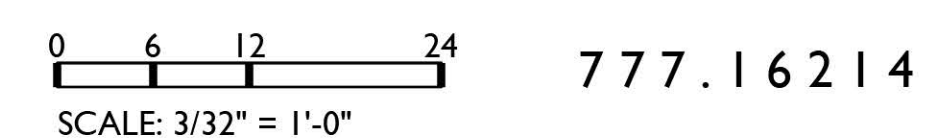
A 3.7

**Bassenian | Lagoni**  
ARCHITECTURE • PLANNING • INTERIORS

**BUILDING ELEVATION**

**825 S MYRTLE AVENUE**  
Monrovia, California

Copyright 2018 Bassenian | Lagoni Architects  
2031 Orchard Drive, Suite 100  
Newport Beach, CA USA 92660  
tel. +1 949 553 9100  
fax +1 949 553 0548



08.06.18

