



---

## FOOTHILL TREE PLANTING PROJECT

NOVEMBER 2, 2021

# Overview

---

- GrowMonrovia, a local 501(c)3 organization, approached the City with the “Foothill Tree Planting Project”
- Project Area – Foothill Blvd, from 5<sup>th</sup> Avenue to Mountain
- Phase One
  - Private Property Tree Planting – 30 trees between Myrtle Avenue and Mountain Avenue
  - Public Property Tree Planting – 48 trees between 5<sup>th</sup> Avenue and Myrtle Avenue

# Tree Planting

---

- 48 Public Trees requested to be planted in existing City parkways
- City Staff does not anticipate conflict with City utilities
- All street trees and shrubs planted in city-owned parkways and rights-of-way shall be approved by the Director of Public Works.

Tree Type	Native to Southern California?	Tree Size	Allowed by MMC 12.44?
Live Oak	Yes	Large	Yes
Canyon Live Oak	Yes	Large	Yes
Engelmann Oak	Yes	Large	Yes
London Plane	No	Large	Yes

# Live Oak

---

Mature size: height of 40–80' and a spread of 60–100' at maturity.

Growth rate: grows at a medium rate, with height increases of 13–24" per year.

Other Attributes –

- Grows rapidly when young.
- Can live for centuries.
- Adapts to almost any type of soil.
- Tolerates compacted soil.





# Canyon Live Oak

---

Mature size: height of 30–90' and a spread of 30–60' at maturity.

Growth rate: grows at a moderate-slow rate

Other Attributes –

- After forest fires, this tree regenerates vigorously by basal sprouting
- Common uses: bank stabilization, deer resistant, attracts birds



# Engelmann Oak

---

Mature size: height of 30–65' and a spread of 60–100' at maturity.

Growth rate: grows at a medium rate, with height increases of 13–24" per year.

Other Attributes –

- Native to Southern California...urban sprawl has affected
- Somewhat more resistant to diseases than other oaks.
- Attracts wildlife
- Like dry soil



# London Plane

---

Mature Size: height of 75–100' and a spread of around 80' at maturity.

Growth Rate: Grows at a medium rate with height increases of 13–24" per year.

## Other Attributes –

- Tolerates pollution and other urban conditions well.
- Produces inconspicuous red flowers in April as the leaves unfurl.
- Yields pendulous ball-like clusters of tightly packed seed approximately 1" in diameter.
- Is not suitable for small areas.





# Public Considerations

---

All 4 tree types are considered “large” per MMC 12.44.010 and thrive when planted in areas larger than available and existing sidewalk area

- City arborist (WCA) would recommend small or medium size trees for existing parkways
- City parkways are too narrow for large tree species to thrive

Large root systems impact sidewalk, utilities, etc.

Staff has only approximate street addresses for planting locations and must still determine –

- Precise location for tree planting
- Tree species to be planted in approved location

City does not have an adopted tree management or replacement plan

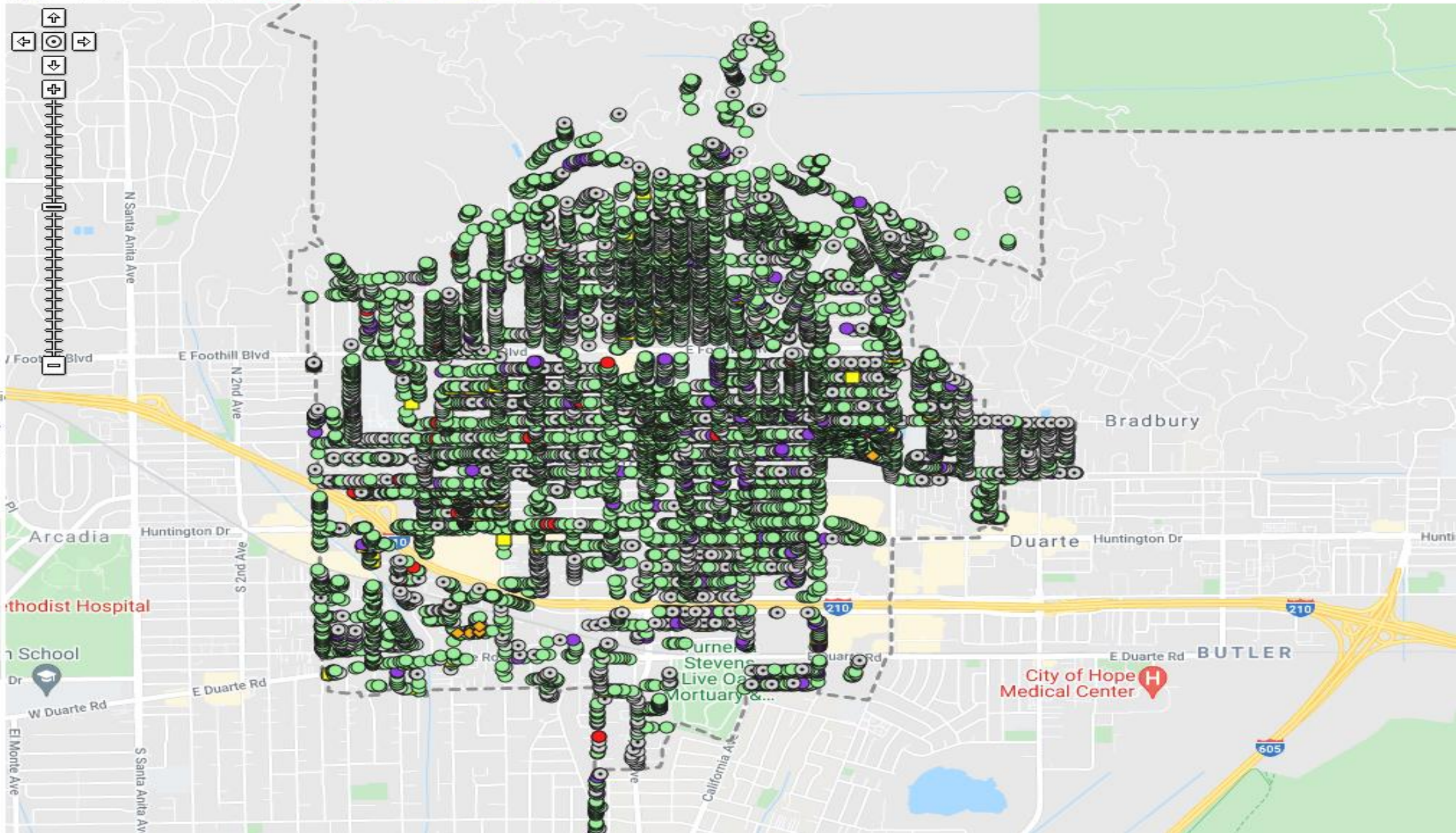


- Layers**
  - Google
  - Satellite
  - WCACrews
  - City**
    - Poly
    - Labels
  - Districts**
    - Poly
    - Labels
  - Streets**
    - Line
    - Labels
  - Inventory**
    - Point
    - Labels
    - Labels (Speci
    - Sym/Species
    - Sym/District
    - Sym/DBH
    - Sym/Height

Navigate Select De-Select Add/Measure Move Site

Zoom to Street

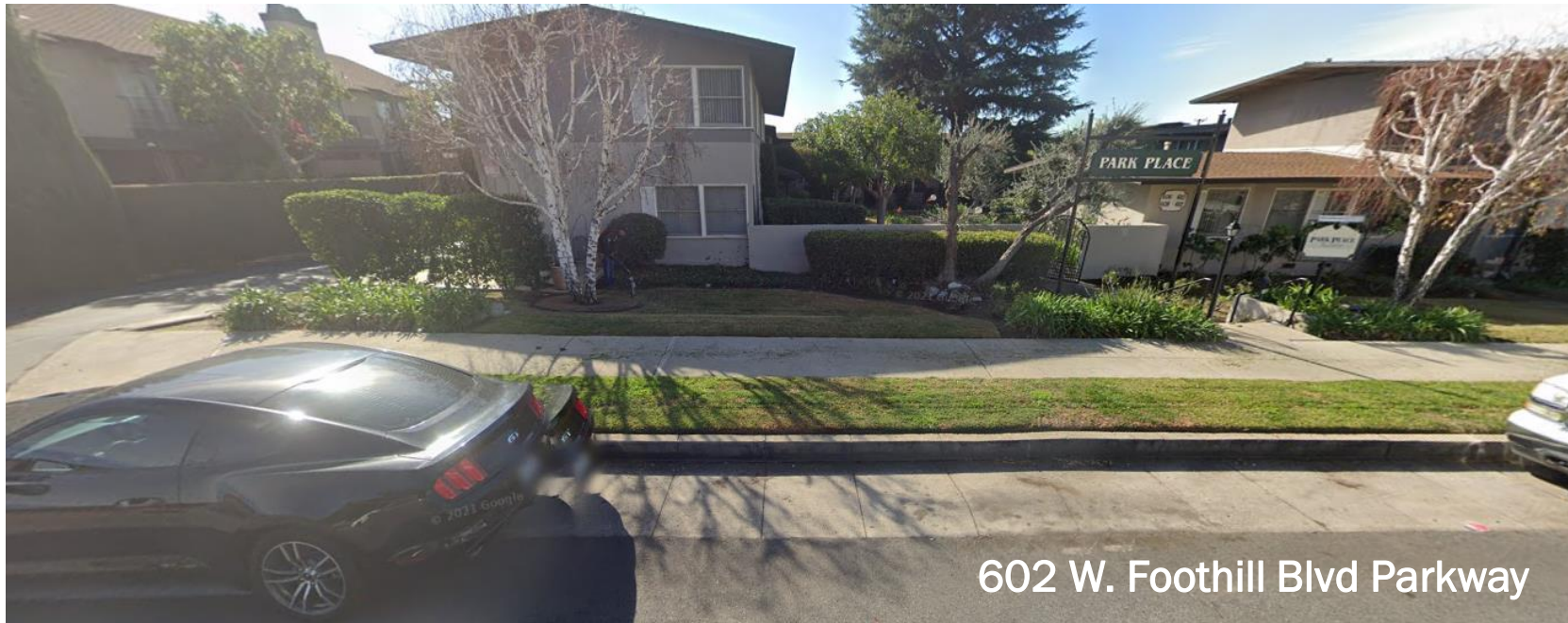
- Legend**
- Vacant Sites
  - Stumps
  - Pole
  - High Priority Maint
  - Potential High Risk





# Locations

---



Address	# of Trees
515 W Foothill	7
602 W Foothill	8
727 W Foothill	1
731 W Foothill	7
811 W Foothill	2
252 W Foothill	6
520 W Foothill	2
616 W Foothill	5
620 W Foothill	1
701 W Foothill	4
824 W Foothill	2
848 W Foothill	3
<b>Total Trees</b>	<b>48</b>



# Locations of Proposed Public Planting Areas

(Phase One is All along W. Foothill Blvd.)





# # of Trees Planted in Public ROW





# Cost

---

GrowMonrovia Proposal	Cost per Unit	Units	Total
Trees	\$ 350.00	48	\$ 16,800.00
Project Management	\$ 160.00	18	\$ 2,880.00
<b>Subtotal</b>			\$ 19,680.00
<b>15% Contingency</b>			\$ 2,952.00
<b>Total Estimated Cost</b>			\$ 22,632.00

## Future Costs:

- City must maintain trees after initial planting period. \$16,760 for 39 weeks to ensure trees are established, watered and maintained
- Years 2 and beyond - \$4,866 in annual maintenance costs

# Questions and/or Direction to Staff

---

## Sources:

Arbor Day Foundation - <https://www.arborday.org/trees/treeGuide/TreeList.cfm>

California Native Plant Society -

<https://calscape.org/loc-California/cat-Trees/ord-popular?srchcr=sc6181abfbb4d8a>

International Oak Society - <https://www.internationaloaksociety.org>

California Office of Environmental Health Hazard Assessment -

<https://oehha.ca.gov/calenviroscreen/maps-data>

California Healthy Places Index - <https://healthyplacesindex.org/map/>