



DAY ONE PRESENTS

# SMOKE-FREE OUTDOOR AREAS



LOVE  
YOUR  
LUNGS   
#CLEANAIRMONROVIA

© 2021. CALIFORNIA DEPARTMENT OF PUBLIC HEALTH. FUNDED UNDER CONTRACT #CTCP-17-19.

WWW.GODAYONE.ORG

FOLLOW US!



@l1monrovia

# DAY ONE

Day One is a community-based nonprofit organization with a 35 - year history of providing effective, high quality and culturally-sensitive public health education, intervention, and policy development.

Day One assists communities, as key agents of change, as well as policy makers, in gathering relevant data and information, and analyzing research findings.

Day One works with Youth Advocates to help develop their leadership skills to become catalysts of change.

We believe in the potential of humanity and know that by caring and helping those we work with we are able to make a difference.



# WHAT WE DO



DRUG-FREE COMMUNITIES



ACTIVE  
TRANSPORTATION



YOUTH ADVOCACY



CLEAN  
AIR/WATER/ENERGY



COMMUNITY ENGAGEMENT



FINANCIAL EQUITY



## SERVICES OFFERED

- CPR/First Aid/AED Classes
- Solar Panels
- Safe, convenient, and responsible means of disposing of prescription drugs during National Prescription Drug Take-Back Day
- Bike Repair and bike classes
- Tax Preparation
- Overdose Prevention & Naloxone Training

# OVERDOSE PREVENTION & **NALOXONE** TRAINING

PRESENTED BY:  
RETHINKING ALCOHOL AND OTHER DRUGS COALITION

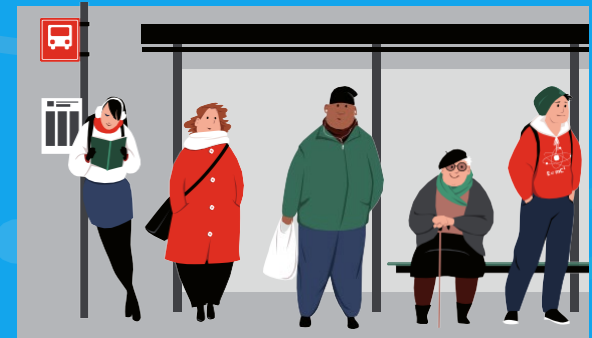
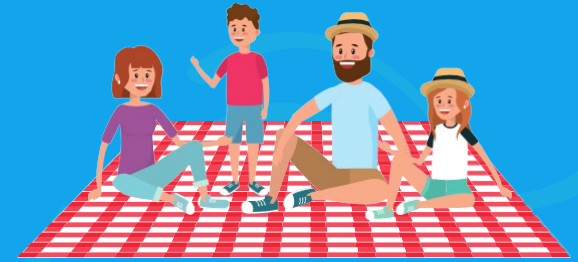
**RAD**  
Rethinking Alcohol and Other Drugs

**Upcoming Service:  
Naloxone Training  
Mid-February**



# COMPREHENSIVE SMOKE-FREE OUTDOOR AREAS POLICY

- ◆ Outdoor dining areas and public parks
- ◆ Doorways and operable windows of privately owned buildings and outdoor worksites
- ◆ Sidewalks and outdoor service areas
- ◆ Public and private golf courses and outdoor public events
- ◆ Definition of smoke including tobacco smoke, and ESD aerosol
- ◆ Definition of “smoking” that means inhaling, exhaling, or carrying any lighted, heated, or ignited cigar, cigarette, cigarillo, pipe, hookah, electronic smoking device, or any plant product intended for human inhalation



# BENEFITS OF SMOKE-FREE POLICIES



- Policies help protect nonsmokers from exposure to secondhand smoke
  - Lower smoking rates among youth and young adults
  - Diminish social acceptability and social advantage for smoking
  - Change the social norm
  - Reduce tobacco litter opportunities (environmental impact)

# RESTRICTIONS IN LOS ANGELES COUNTY

These cities in LA have restrictions in all **outdoor dining areas:**

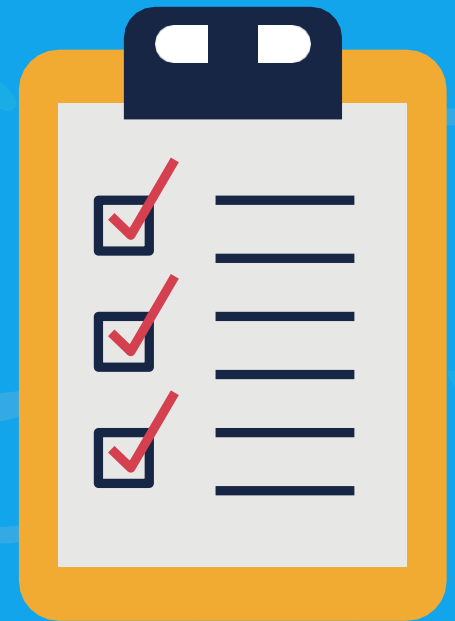
- ◆ Agoura Hills
- ◆ Alhambra
- ◆ Baldwin Park
- ◆ Bell
- ◆ Beverly Hills
- ◆ Calabasas
- ◆ Carson
- ◆ Compton
- ◆ Glendale
- ◆ Hermosa Beach
- ◆ Huntington Park
- ◆ La Canada Flintridge
- ◆ Malibu
- ◆ Manhattan Beach
- ◆ Monterey Park
- ◆ Palos Verdes Estates
- ◆ Pasadena
- ◆ Redondo Beach
- ◆ San Fernando
- ◆ Santa Monica
- ◆ Sierra Madre
- ◆ South El Monte
- ◆ South Pasadena
- ◆ Temple City
- ◆ Unincorporated LA County



# ALA'S 2021 TOBACCO CONTROL REPORT CARD

The American Lung Association in California established local tobacco control grades in four categories that reflect where local action is needed and where the greatest public health benefit can be derived.

The report serves as a blueprint for what state and federal leaders need to do to reduce tobacco use and exposure to secondhand smoke. A grade of "A" is assigned for excellent tobacco control policies while an "F" indicates inadequate policies.





# ALA'S 2021 TOBACCO CONTROL REPORT CARD

## State Of Tobacco Control 2021 - California Local Grades

### Los Angeles County (3/4)

	Lancaster	Lawndale	Lomita	Long Beach	Los Angeles	Lynwood	Malibu	Manhattan Beach	Maywood	Monrovia	Montebello	Monterey Park	Norwalk	Palmdale	Palos Verdes Estates	Paramount	Pasadena	Pico Rivera	Pomona	Rancho Palos Verdes	Redondo Beach	Rolling Hills	Rolling Hills Estates
<b>Overall Tobacco Control Grade</b>	D	C	C	C	C	C	C	A	D	F	D	C	F	C	D	F	A	F	F	F	B	F	F
<b>TOTAL POINTS</b>	4	5	5	7	7	4	6	13	4	1	4	6	1	7	3	0	12	0	0	1	9	0	0
<b>Smokefree Outdoor Air</b>	F	D	D	C	B	F	C	A	F	D	F	C	D	D	B	F	A	F	F	D	A	F	F
Dining	0	0	0	2	2	0	4	4	0	0	2	4	0	0	4	0	4	0	0	0	4	0	0
Entryways	0	0	0	0	4	0	4	4	0	0	4	0	0	4	0	4	0	0	0	0	4	0	0
Public Events	0	0	0	2	2	0	2	4	0	0	0	0	2	4	0	4	0	0	0	2	0	0	0
Recreation Areas	0	4	4	4	3	2	2	4	2	4	0	4	3	3	2	0	4	2	2	3	4	0	2
Service Areas	2	0	0	2	0	0	0	4	0	0	0	0	0	0	0	4	0	0	0	4	0	0	0
Sidewalks	0	0	0	0	0	0	0	1	0	0	0	0	0	1	0	1	0	0	0	1	0	0	0
Worksites	0	0	0	0	0	0	0	0	0	0	0	0	0	0	0	0	0	0	0	1	0	0	0
<b>TOTAL POINTS</b>	2	4	4	10	11	2	12	21	2	4	2	12	3	5	15	0	21	2	2	3	20	0	2
<b>Smokefree Housing</b>	F	F	F	D	F	F	F	A	F	F	F	F	D	F	F	A	F	F	F	F	F	F	F
Nonsmoking Apartments	0	0	0	0	0	0	0	4	0	0	0	0	0	0	0	4	0	0	0	0	0	0	0
Nonsmoking Condominiums	0	0	0	0	0	0	0	4	0	0	0	0	0	0	0	4	0	0	0	0	0	0	0
Nonsmoking Common Areas	0	0	0	2	0	0	0	4	0	0	0	0	2	0	0	4	0	0	0	0	0	0	0
<b>TOTAL POINTS</b>	0	0	0	2	0	0	0	12	0	0	0	0	2	0	0	12	0	0	0	0	0	0	0
<b>Reducing Sales of Tobacco Products</b>	A	A	A	A	A	A	A	A	A	F	A	A	F	A	F	F	A	F	F	F	A	n/a	F
Tobacco Retailer Licensing	4	4	4	4	4	4	4	4	4	0	4	4	0	4	0	0	4	0	0	0	4	0	0
<b>TOTAL POINTS</b>	4	4	4	4	4	4	4	4	4	0	4	4	0	4	0	0	4	0	0	0	4	0	0
<b>Emerging Issues Bonus Points</b>																							
Emerging Products Definition - <i>Secondhand Smoke</i>	0	0	0	1	1	1	0	1	0	1	0	1	1	1	0	0	0	1	1	0	1	1	1
Emerging Products Definition - <i>Licensing</i>	1	0	1	0	1	1	1	1	0	0	1	0	0	1	0	0	0	0	0	0	1	0	0
Retailer Location Restrictions	0	0	0	0	0	1	0	1	0	0	0	0	1	0	0	1	0	0	0	0	0	0	0
Sale of Tobacco Products in Pharmacies	0	0	0	0	0	0	0	1	0	0	0	0	0	0	0	0	0	0	0	0	0	0	0
Flavored Tobacco Products	0	0	0	0	0	0	0	1	1	0	0	0	0	0	0	0	0	0	0	0	1	0	0
Minimum Pack Size of Cigars	0	0	0	0	0	0	0	0	0	0	0	0	0	0	0	0	0	0	0	0	0	0	0
<b>TOTAL POINTS</b>	1	0	1	1	2	3	1	5	1	1	1	1	1	3	0	0	1	1	1	0	3	1	1



# CITIES BY GRADE

A

Beverly Hills, Calabasas, Compton, Huntington Park, Manhattan Beach, Pasadena, Santa Monica, South Pasadena

B

Baldwin Park, Burbank, Carson, Culver City, El Monte, Glendale, Hermosa Beach, Redondo Beach, San Fernando, Temple City

C

Bell Gardens, Cerritos, Duarte, Gardena, Hawaiian Gardens, Hawthorne, Inglewood, La Cañada Flintridge, La Verne, Lawndale, Lomita, Long Beach, Los Angeles, Lynwood, Malibu, Monterey Park, Palmdale, Rosemead, San Gabriel, Sierra Madre, South El Monte, West Hollywood, Unincorporated Los Angeles County

D

Agoura Hills, Arcadia, Artesia, Bell, El Segundo, Lancaster, Maywood, Montebello, Palos Verdes Estates, West Covina

F

Alhambra, Avalon, Azusa, Bellflower, Bradbury, Claremont, Commerce, Covina, Cudahy, Diamond Bar, Downey, Glendora, Hidden Hills, Industry, Irwindale, La Habra Heights, La Mirada, La Puente, Lakewood, Monrovia, Norwalk, Paramount, Pico Rivera, Pomona, Rancho Palos Verdes, Rolling Hills, Rolling Hills Estates, San Dimas, San Marino, Santa Clarita, Santa Fe Springs, Signal Hill, South Gate, Torrance, Vernon, Walnut, Westlake Village, Whittier



# GRADE CRITERIA

The Smoke-free Outdoor Air grade is based on the smoking restrictions adopted by local communities in seven outdoor areas—(1) **Dining Areas**; (2) **Entryways**; (3) **Public Events**; (4) **Recreation Areas**; (5) **Service Areas**; (6) **Sidewalks in Commercial Areas**; and (7) **Worksites**. In the five outdoor areas, the city or county is given a point value between 0 and 4 based on the strength of their local ordinance.

In two of the outdoor areas (Sidewalks in Commercial Areas and Worksites), the city or county is given a point value of 0 or 1 based on their local ordinance. These point values for the seven areas are then added together to calculate the overall Smoke-free Outdoor Air grade using a scale of: A (18+); B (13-17); C (8-12); D (3-7); and F (0-2).



1

## Dining Areas

**Description** – Restrictions on smoking in outdoor seating areas at restaurants and bars.

**State Law** – Smoking is prohibited in indoor dining areas but there are no state law restrictions on smoking in outdoor dining areas.

### Criteria

- 4 – All outdoor dining areas at bars and restaurants are 100% smokefree
- 2 – Smoking restricted in outdoor dining areas but designated smoking areas allowed or exceptions made for certain types of bars and/or restaurants
- 0 – No smoking restrictions in outdoor dining areas

2

## Entryways

**Description** – Restrictions on smoking in places within a certain distance of doors, windows, and other openings into all enclosed areas where smoking is prohibited.

**State Law** – Smoking is prohibited within 20 feet of entrances, exits, or operable windows of a public building, which includes state, county and city buildings.

### Criteria

- 4 – Smoking prohibited within 20 or more feet of entryways
- 3 – Smoking prohibited within 15-19 feet of entryways
- 2 – Smoking prohibited within some distance less than 15 feet of entryways or within an unspecified distance of entryways
- 0 – No smoking restrictions for entryways

3

## Public Events

**Description** – Smoking restrictions at events open to the public such as fairs, farmer's markets, parades, concerts and other similar events that take place on public property.

**State Law** – There are no statewide restrictions on smoking in outdoor public events.

### Criteria

- 4 – All public events are 100% smokefree
- 3 – Smoking restricted at all public events, but designated smoking areas are permitted
- 2 – Smoking restricted at specific types of public events (such as in all farmer's markets), but not all public events
- 0 – No restrictions on smoking at public events

4

### Recreation Areas

**Description** – Smoking restrictions at parks, beaches, trails and other similar recreation areas.

**State Law** – Smoking is prohibited within 25 feet of tot lots and playgrounds.

#### Criteria

- 4** – All recreation areas are 100% smokefree
- 3** – Smoking restricted in all recreation areas, but designated smoking areas are permitted
- 2** – Smoking prohibited in some parks, beaches and trails but not all recreation areas
- 0** – No smoking restrictions in recreation areas

5

### Service Areas

**Description** – Smoking restrictions in outdoor locations where people stand or wait for services including ATM lines, public transit stops, taxi stands and ticket lines.

**State Law** – There are no statewide restrictions on smoking in service areas.

#### Criteria

- 4** – Smoking restricted at all service areas
- 2** – Smoking restricted at some types of service areas (such as at bus stops) but not all service areas
- 0** – No restrictions on smoking in service areas

6

### **Smokefree Outdoor Air - Sidewalks in Commercial Areas**

**Description** – Smoking restrictions on sidewalks and other pedestrian walkways in commercial areas, such as downtown areas and outdoor shopping centers.

**State Law** – There are no statewide restrictions on smoking on sidewalks in commercial areas.

#### **Criteria**

- 1** – Smoking restricted on sidewalks or other pedestrian walkways within all commercial areas or within a specified commercial or downtown area

7

### **Smokefree Outdoor Air - Worksites**

**Description** – Smoking restrictions in outdoor places of employment, such as construction sites.

**State Law** – There are no statewide restrictions on smoking in outdoor worksites.

#### **Criteria**

- 1** – Smoking restricted for some or all outdoor worksites

The three tobacco control policy grades that are assigned to each city and county are:

- (1) **Smokefree Outdoor Air**
- (2) **Smokefree Housing**
- (3) **Reducing Sales of Tobacco Products**

These three grades plus **Emerging Issues Bonus Points** are then used to calculate an Overall Tobacco Control grade for each municipality.

In sum, for every 3 points listed in each of the tobacco control categories, 1 point is given towards the Overall Tobacco Control Grade.

**Overall Tobacco Control Grade**

- A:** 11-12 pts
- B:** 8-10 pts
- C:** 5-7 pts
- D:** 2-4 pts
- F:** 0-1 pts

**Smokefree Outdoor Air Grade**

- A:** 18+ pts
- B:** 13-17 pts
- C:** 8-12 pts
- D:** 3-7 pts
- F:** 0-2 pts

**Smokefree Housing Grade**

- A:** 10+ pts
- B:** 7-9 pts
- C:** 4-6 pts
- D:** 1-3 pts
- F:** 0 pts

**Reducing Sales of Tobacco Products Grade**

- A:** 4 pts
- B:** 3 pts
- C:** 2 pts
- D:** 1 pts
- F:** 0 pts

**Emerging Issues Bonus Points**

3+ pts adds one point to the Overall Grade



# GET IN TOUCH



[alisha@godayone.org](mailto:alisha@godayone.org)

director of tobacco programs

[jerry@godayone.org](mailto:jerry@godayone.org)

project coordinator

[maritza@godayone.org](mailto:maritza@godayone.org)

community engagement coordinator

