



# Options for Intersection Improvements at Mountain and Lemon Avenues

CITY COUNCIL – STUDY  
SESSION

APRIL 19, 2022

# Discussion Items

- ▶ 1. Discussion on Resurfacing of Mountain Avenue
- ▶ 2. Discussion related to Mountain and Lemon Avenues Intersection

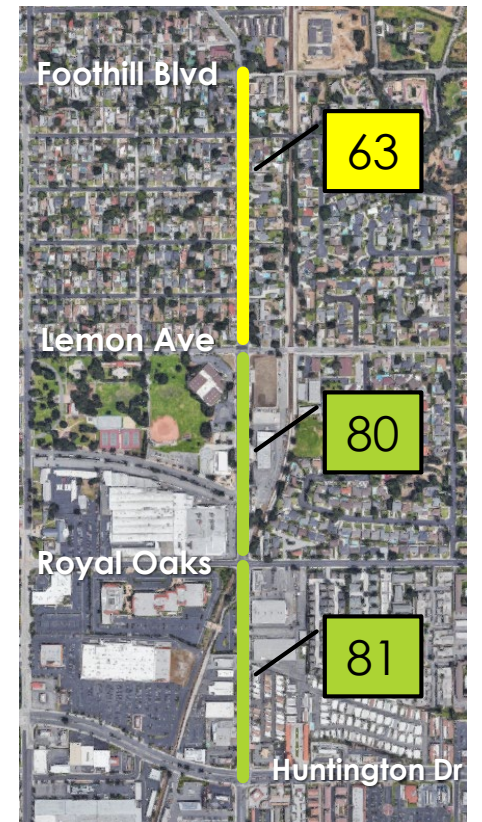
# Background

- ▶ Mountain Ave was paved during Monrovia Renewal Southwest/Southeast in 2016 – Contractor not paid due to issues with application of pavement
- ▶ The intersection of Mountain Ave and Lemon Ave has been reviewed by the Traffic Safety Committee with several improvements installed including striping, signage and curb painting.
- ▶ In February 2022 meeting, City Council directed staff to provide information on the Mountain Ave and Lemon Ave intersection and options to repave the road and upgrade the traffic signal



# Current Conditions

- ▶ Current PCI scores are between 63 (Fair) and 81 (Good)
- ▶ When would this be repaved based on preliminary PMP recommendations?
  - ▶ FY2023-24
  - ▶ Although the PCI score is acceptable, the cape seal is not performing as intended.
- ▶ Type of recommended repair by section/type (i.e., slurry, grind and overlay, full reconstruct)
  - ▶ Overlay for Foothill to Lemon
  - ▶ Preliminary PMP recommended Slurry Seal/Microsurfacing with patching for section south of Lemon and



# Mountain Ave – Current Condition

Foothill – Southbound



Palm Ave – Southbound





# Mountain Ave – Current Condition

Oakdale – Southbound



Lime Ave – Southbound



# Mountain Ave – Current Condition

Lemon Ave - Southbound



Olive Ave – Southbound





# Mountain Ave – Current Condition

Huntington Drive - Northbound



Royal Oaks – Northbound



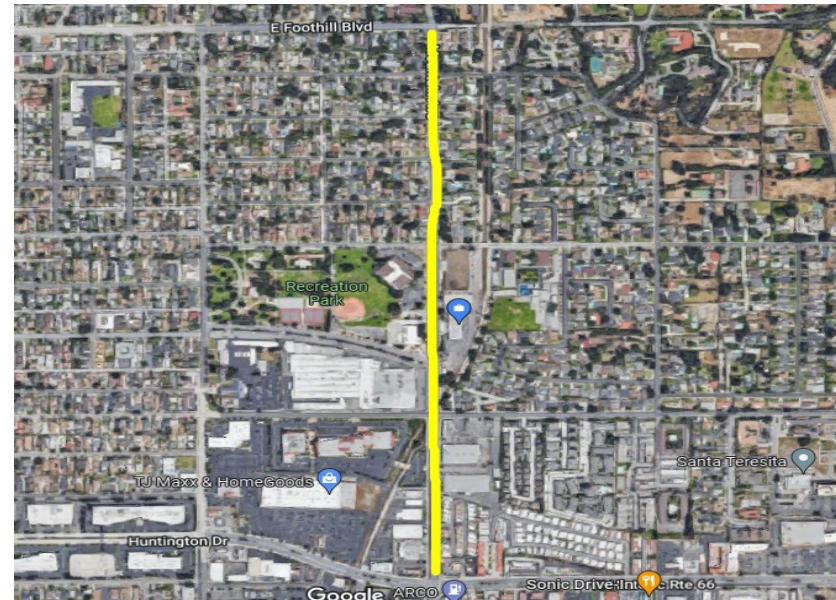


# Repaving

## Mountain Ave Repaving

- ▶ Initial Estimate of \$1,100,000
- ▶ Mountain Ave was initially included in Monrovia Renewal Southwest/Southeast and Northeast

## Foothill Blvd to Huntington Drive



# Construction Estimate for Repaving

City of Monrovia					18-Apr-22	
Brad S. Merrell P.E., Contract City Engineer						
City of Monrovia - Mountain Avenue - Repaving Project from Huntington to Foothill						
Rough Engineer's Estimate						
Description	Quantity	Units	Rate	Total	Subtotals	
<b>Mountain Ave Repaving</b>						
1	2 Inch Milling	275,200	SF	\$ 0.45	\$	123,840
2	2 inch ARHM overlay (reinforced)	275,200	SF	\$ 1.90	\$	522,880
3	Striping	20,000	LF	\$ 6.00	\$	120,000
4	Adjustment of Utilities	60	LF	\$ 750.00	\$	45,000
5	Concrete Repairs	1	LS	\$ 85,000.00	\$	85,000
6					\$	-
7					\$	-
8					\$	896,720
Description	Quantity	Units	Rate	Total	Subtotals	
9	Public Notification	1	LS	\$ 7,500.00	\$	7,500
10	Mobilization	1	LS	\$ 80,000.00	\$	80,000
11	Traffic Control	1	LS	\$ 35,000.00	\$	35,000
					\$	-
					\$	-
					\$	122,500
					\$	Total Estimate 1,019,220
12	Contingency 15%				\$	152,883
					\$	Total Engineer's Estimate 1,172,103



# Information on staff efforts

- ▶ Staff has applied for several grants including through Caltrans Highway Safety Improvement Program and San Gabriel Valley COG Sub-regional Measure M Funding Program.
- ▶ Current grant programs are seeking specific types of improvements such as:
  - ▶ “Complete Street” Improvements
  - ▶ Bicycle Network Improvements
  - ▶ Reducing Street Width
  - ▶ Or, seek significant matching funds

# Existing Conditions



## Existing challenges

- ▶ Limited right of way
- ▶ Offset Crosswalks
- ▶ Old Traffic signal equipment



# Picture slides of each corner

Northeast Corner



Southeast Corner





# Pictures slides of corners part 2

Northwest Corner



Southwest corner





# Traffic Signal Upgrade

## Proposed Intersection Modifications



## Improvements

- ▶ Initial estimate of \$850,000
- ▶ Intersection realignment
- ▶ Upgraded traffic signal equipment and programming
- ▶ Shorten crosswalks for enhanced safety







Questions?