

# Clean Power Alliance: Helping Los Angeles County Communities Meet Their Clean Energy Goals

City of Monrovia  
October 4, 2022



# Clean Power Alliance is a publicly-owned electricity provider serving customers clean energy at competitive rates

- ⚡ Clean Power Alliance purchases clean power and Southern California Edison delivers it.
- ⚡ SCE sends a single monthly bill, which includes SCE charges for electricity delivery and CPA charges for electricity supply/generation.
- ⚡ CPA charges are NOT an added fee; they simply replaces the SCE supply/generation charges on the bill.

**We work together to bring you access to the most sustainable energy available**



# Community Choice Aggregators (CCAs)

## CCAs serve a growing share of electricity customers across California

- ⚡ Enabled by state legislation in 2002
- ⚡ Serve ~ 1/3 of electricity load in CA; most are Joint Powers Authorities
- ⚡ Provide consumer choice, competition, innovation, local control and investment, and tools for climate action and resilience
  - When a city joins a CCA, all customers in that city are automatically defaulted into the CCA service unless they affirmatively opt-out.
  - Most customers stay with the CCA – in CPA's case the participation rate is over 90%
- ⚡ CCAs have driven the vast majority of clean energy development in CA over the past 5 years
- ⚡ Because CCAs are regulated by Boards made up of local elected officials and not the California Public Utilities Commission, they more closely reflect the goals and values of the local communities they serve

# Clean Power Alliance is a JPA made up of 30 Cities and the Counties of Los Angeles and Ventura

- ⚡ CPA serves approximately 1 million customer accounts representing 3 million residents and businesses
- ⚡ Largest CCA in CA; more customers on 100% renewable energy rates than any utility in the nation
- ⚡ Each member has a seat on Board of Directors – One member, one vote
- ⚡ Experienced staff from private and public sectors



# Three Energy Products – The Power of Choice

Start Making Your Community Better



**Lean Power**

40% clean power

Support the Future of Your Community



**Clean Power**

50% clean power

Invest in Your Community and the World



**100% Green Power**

100% renewable energy.

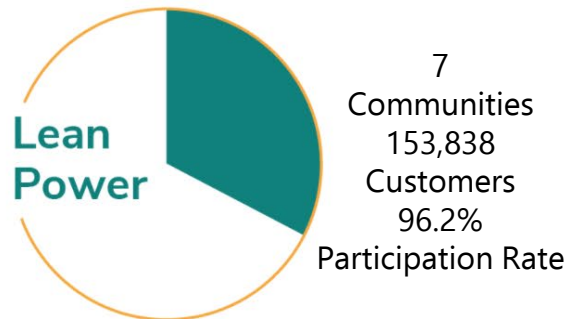


# Greenhouse Gas Emissions Impact

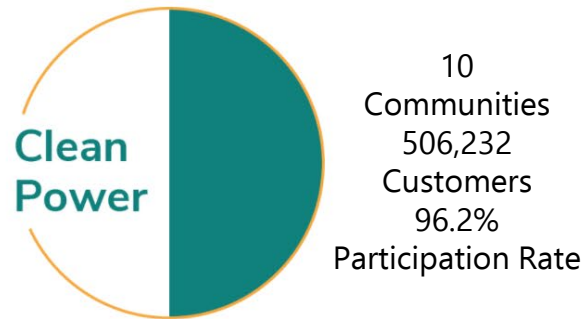
- ⚡ CPA's Lean Power offers similar GHG emissions to SCE
- ⚡ CPA's Clean Power has an emissions profile 5%-10% lower than SCE
- ⚡ CPA's 100% Green Power zeros out a customer's and potentially an entire community's electricity-based GHG emissions through the provision of 100% renewable energy, mostly generated here in Southern California
- ⚡ Electricity use is the second largest source of GHG emissions after transportation
- ⚡ As transportation increasingly electrifies, the emissions reduction impact of the 100% Green Power rate is compounded
- ⚡ Price differentials of Lean, Clean and 100% Green Power have narrowed to less than 5%



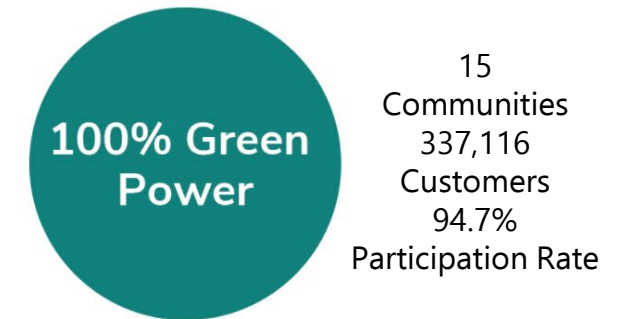
# Customers are automatically enrolled at the default rate selected by their community



- ⚡ Arcadia
- ⚡ Camarillo
- ⚡ Hawthorne
- ⚡ Paramount
- ⚡ Simi Valley
- ⚡ Temple City
- ⚡ Westlake Village



- ⚡ Alhambra
- ⚡ Beverly Hills
- ⚡ Carson
- ⚡ Claremont
- ⚡ Downey
- ⚡ Hawaiian Gardens
- ⚡ Los Angeles County
- ⚡ Moorpark
- ⚡ Redondo Beach
- ⚡ Whittier



- ⚡ Agoura Hills
- ⚡ Calabasas
- ⚡ Culver City
- ⚡ Malibu
- ⚡ Manhattan Beach
- ⚡ Ojai
- ⚡ Oxnard
- ⚡ Rolling Hills Estates
- ⚡ Santa Monica
- ⚡ Sierra Madre
- ⚡ South Pasadena
- ⚡ Thousand Oaks
- ⚡ Ventura County
- ⚡ Ventura
- ⚡ West Hollywood

Default change to 100% Green scheduled for October 2022 (279,161 customers)

Default change to 100% Green scheduled for October 2023 (27,006 customers)

Default change to 100% Green scheduled for October 2024 (111,502 customers)

Non-Residential Customers to 100% Green scheduled for October 2022 to align with existing 100% Green residential default (1,825 customers)

Low-income customers in 100% Green default communities receive 100% renewable energy at the Clean Power rate



# Power Procurement – Reliable and Renewable

- ⚡ 21 long-term contracts signed to date, totaling 1,613 MW of renewable energy and 878 MW of storage
- ⚡ Diverse portfolio reduces more than one million tons of greenhouse gases (GHG) annually while improving system reliability
- ⚡ Approximately 2,500 jobs created
- ⚡ Preferences for projects that:
  - ⚡ Are in or close to CPA territory
  - ⚡ Prioritize workforce development
  - ⚡ Bring benefits to disadvantaged communities
  - ⚡ Show high levels of environmental stewardship





# Programs that Benefit the Community

- ⚡ Our Board of Directors has adopted a five-year strategic plan calling for \$200 million in local investment in customer programs and project development that benefit communities in three priority areas:
  - ⚡ Resiliency and Demand Management
  - ⚡ Building and Transportation Electrification
  - ⚡ Local Renewable Energy Procurement



# CPA Local Programs

- ⚡ **Clean Energy Backup Power** systems for member agencies' critical facilities
- ⚡ **Community Solar** with 20% bill discounts for low-income customers
- ⚡ **Demand Response** incentives/bill credits for residents to reduce electricity use when energy is most expensive and dirty
- ⚡ **EV Charging Station Incentives** for publicly accessible installations
- ⚡ **Over \$1 Million in scholarship and workforce development** programs in partnership with Community Colleges and IBEW
- ⚡ **All low-income customers** in 100% Green default cities get 100% renewable energy at CPA's Clean energy rate



# 2022/23 Rates

- ⚡ Part of CPA's value proposition is to always have rates that are competitive with SCE.
- ⚡ CPA's Board sets rates annually, effective July 1, to provide rate stability and predictability. Due to market conditions, multiple SCE rate changes, and annual volatility in the PCIA, or "exit fee," comparisons can fluctuate over the course of a year.

| Energy Product   | Typical Residential Bill | Comparison to SCE base |
|------------------|--------------------------|------------------------|
| SCE base rate    | \$172                    |                        |
| Lean Power       | \$171                    | -1.0%                  |
| Clean Power      | \$172                    | 0.0%                   |
| 100% Green Power | \$177                    | 3.0%                   |





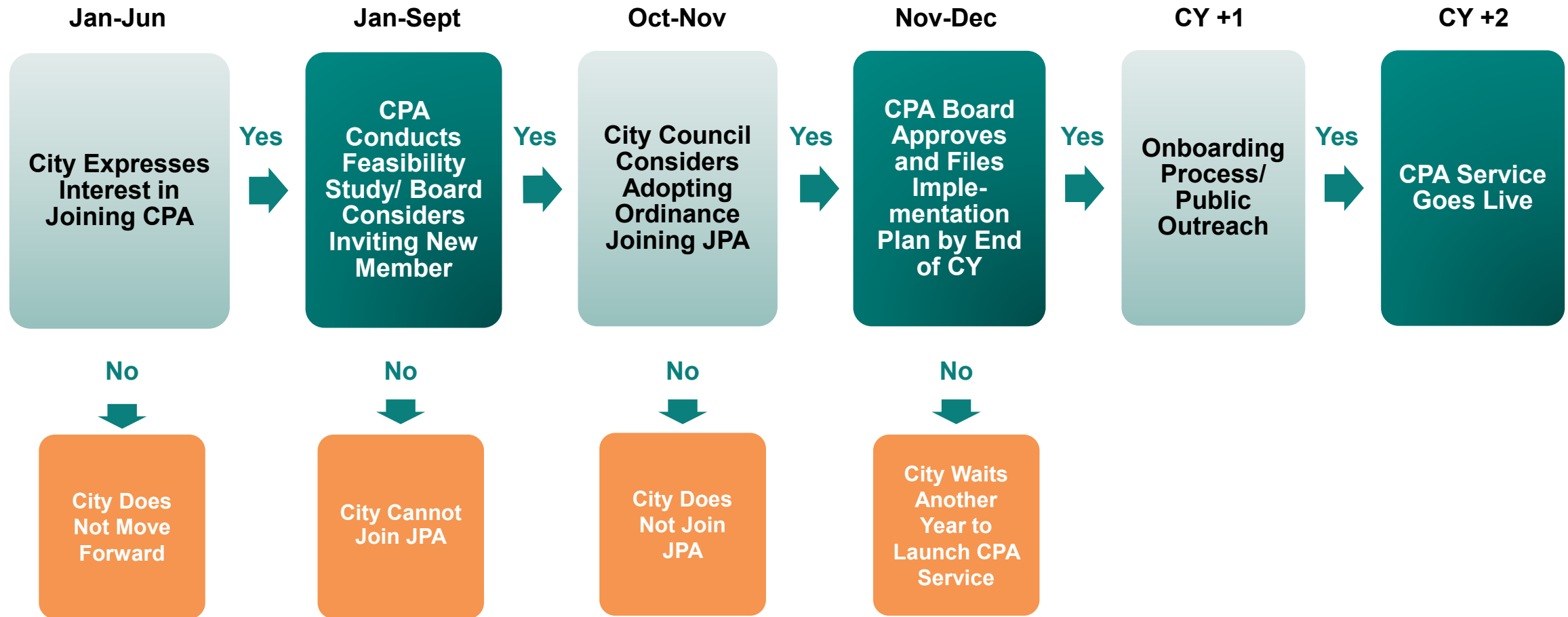


# Bill Assistance

- ⚡ Approximately 30% of CPA customers receive bill assistance through CARE, FERA and Medical Baseline programs
- ⚡ Customers remain enrolled in these programs when they become CPA customers
- ⚡ In 100% Green default communities, low-income customers receive 100% renewable energy at no extra charge
- ⚡ CPA program investments prioritize low-income customers and communities



# Typical Process to join CPA





# Power for Good



## CPA brings multiple opportunities and benefits

- ⚡ Reliable clean energy at competitive rates
- ⚡ Community and customer choice
- ⚡ Accelerated and cost-effective emission reductions
- ⚡ Local control and values alignment
- ⚡ Investment in local needs, green jobs and green economy



# Connect with CPA

**Karen Schmidt, Director, Rates and Strategy**

**[kschmidt@cleanpoweralliance.org](mailto:kschmidt@cleanpoweralliance.org)**

**Gina Goodhill, Director, Government Affairs**

**[ggoodhill@cleanpoweralliance.org](mailto:ggoodhill@cleanpoweralliance.org)**

