

From: [Angela Miramontes](#)
To: [City Clerk](#)
Cc: [Angela Miramontes](#)
Subject: Nature For All - Monrovia Support - The PUBLIC Lands Act
Date: Tuesday, October 4, 2022 1:17:16 PM
Attachments: [image004.png](#)
[image005.png](#)

CAUTION: This email originated from outside of the organization. Do not click links or open attachments unless you recognize the sender and know the content is safe.

Hello,

I'm reaching out to the Monrovia City Council to share some information on the PUBLIC Lands Act and to ask for your support by signing onto this legislation.

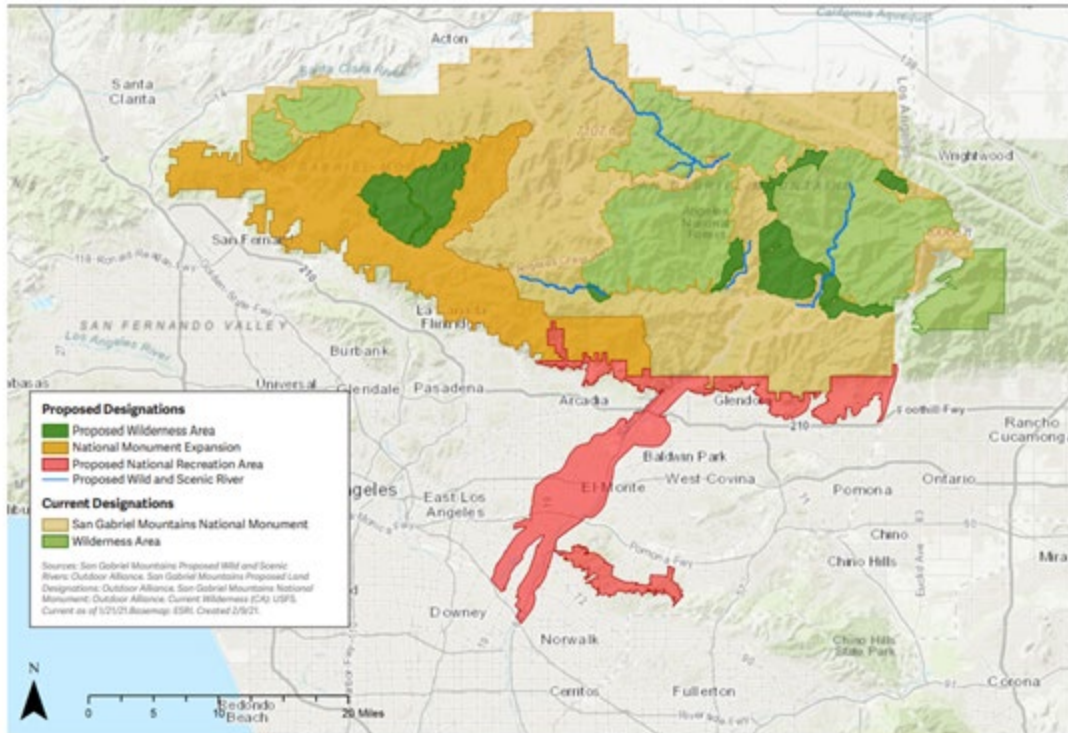
The Protecting Unique and Beautiful Landscapes by Investing in California (PUBLIC) Lands Act would increase protections for over 1 million acres of federal public lands throughout Northwest California, the Central Coast, and Los Angeles, including nearly 600,000 acres of new wilderness, more than 583 miles of new wild and scenic rivers, and the expansion of an existing national monument by more than 100,000 acres.

This legislation would protect California's iconic landscapes, provide critical access to open space for communities, support California's outdoor recreation economy, and fight the climate crisis. Guided by science and input from local communities, the bill also advances the nation's and California's goals of conserving 30% of our lands and waters by 2030.

Title III of the PUBLIC Lands Act specifically is the San Gabriel Mountains Foothills and Rivers Protection Act. This provision would expand the San Gabriel Mountains National Monument by over 109,000 acres to include the western Angeles National Forest and establish a National Recreation Area along the San Gabriel Valley foothills and the Rio Hondo and San Gabriel River corridors. The bill would designate over 30,000 acres as wilderness and over 45 miles of Wild and Scenic Rivers throughout the San Gabriel range. Los Angeles County is one of the most park-poor, densely populated, and polluted regions in the United States. This bill would increase equitable access to our public lands by increasing recreational opportunities for the 17 million people living in the Los Angeles region. This bill also protects habitat for Bighorn Sheep and big cone Douglas fir, which are both gravely threatened by climate change.

Please see map below for proposed extensions:

PUBLIC LANDS ACT: SAN GABRIEL MOUNTAINS, FOOTHILLS, AND RIVERS PROTECTION ACT



Protecting our public lands and rivers is an important investment in our state's ongoing economic recovery. The legislation will conserve places that are beloved for outdoor activities. As it becomes safe to travel again, protecting these places will help bolster our state's outdoor recreation economy. Prior to the pandemic, this industry was a significant economic driver, in local communities and throughout the state.

According to the Bureau of Economic Analysis, in 2019 California's outdoor recreation economy contributed more than any other state to the US Gross Domestic Product (GDP), generating \$57.4 billion and over 575,000 jobs in total.

Annually, locals and visitors spend nearly \$83.9 million in the local economy to experience the San Gabriel Mountains. Over 3.6 million people a year visit the Angeles National Forest which economists estimate provide an economic value of \$292 million to them. Expanding the San Gabriel Mountains to include the western half of the Angeles National Forest will encourage more visitation to the area and will boost local economies.

Your support is invaluable! Please join us, other local NGO's, community members and elected officials in supporting this bill and showing our Senate that these changes are necessary to create healthy communities, economic growth, and climate resilient neighborhoods.

The sign-on letter is provided below:

[San Gabriel Mountains Foothills and Rivers Bill Sign-on Letter \(google.com\)](#)

We look forward to working with our community leaders to move this bill forward. If you have any questions or would like to meet, please reach out and we will gladly schedule a meeting to further discuss details of this legislation.

Thank you for your time and consideration!

Angela Miramontes
Amigos de los Rios
C: 909-957-6322



October 2nd, 2022

City of Monrovia
415 South Ivy Avenue
Monrovia CA, 91016

RE: Consideration of membership in the Clean Power Alliance

Dear Mayor and Councilmembers,

I submit this letter to the council to encourage the City of Monrovia to join Clean Power Alliance (CPA), the regional Community Choice Energy provider. I have been a customer of CPA since 2019, and I also serve as the chair of the CPA's community Advisory Committee, representing unincorporated Los Angeles County. I believe strongly in the mission of the CPA to provide competitively priced electricity to customers, while speeding the adoption of clean energy, providing customers with more choices to meet their needs, and working with member agencies to provide local community benefits throughout our service area.

CPA is comprised of 32 communities serving over three million residents and businesses. What started as an unknown but hopeful alternative to procuring energy now serves the vast majority of our region's cities and unincorporated areas.

Community Choice Energy offers an electricity supply alternative to the utility monopoly of the investor-owned utility Southern California Edison (SCE). CPA offers an efficient and cost-effective solution for quickly reducing greenhouse gas emissions. Most importantly, it offers residents and businesses a choice to freely choose where their energy comes from, and residents can opt-out or down at any time.

CPA partners with local cities to bring access to clean power in Los Angeles and Ventura counties, offers stable, competitive rates and higher renewable content. More competition leads to better prices and services, which is precisely what is occurring in our region with CPA.

As a community energy provider rather than an investor-owned, for-profit company, CPA can reinvest profits into the communities we serve. CPA has launched local programming that includes support for electric vehicle infrastructure, community solar, resilience and grid management, building electrification, and green workforce development programs. We believe that the residents of the City of Monrovia would also benefit from these local programs.

Community Choice Energy allows cities to help California meet our statewide goal of Carbon Neutrality by 2045, gives residents a choice, allows competition for better prices, and offers local programming that cities such as Monrovia need in the transition to a cleaner and greener future. I urge the City of Monrovia to join Clean Power Alliance and the millions in our region who have already made the switch.

Sincerely,

Neil A. Fromer
Altadena resident
Chair, Clean Power Alliance Community Advisory Committee

From: [Michelle Ellison](#)
To: [Becky Shevlin](#); [Gloria Crudgington](#); [Larry Spicer](#); [Tamala Kelly](#); [Sergio Jimenez](#)
Cc: [City Clerk](#)
Subject: CPA and 100% Green - Agenda Item AR-1
Date: Tuesday, October 4, 2022 10:30:27 AM
Attachments: [image.png](#)

CAUTION: This email originated from outside of the organization. Do not click links or open attachments unless you recognize the sender and know the content is safe.

Dear Council,

It would be fantastic to have Monrovia join Clean Power Alliance (CPA)! My town of Ojai is part of CPA (on which I serve as an alternate director on the board) and we are benefiting from more choices, local control and programs, competitive rates, and renewable energy.

In joining CPA, you will have the opportunity to virtually eliminate electricity-related emissions and make it easy for your 38,000 residents to power their homes and businesses on clean energy, simply by setting the default at 100% Green Power. The 100% renewable default has proven to be one of the most significant, cost-effective, and immediate ways for a city to reduce its carbon footprint and make huge progress on its climate action goals. The optimal time to set the default at 100% is right from the start when customers begin service with CPA.

Currently, 22 of 32 CPA member agencies (Los Angeles and Ventura Counties, Agoura Hills, Alhambra, Beverly Hills, Calabasas, Camarillo, Claremont, Culver City, Hawthorne, Malibu, Manhattan Beach, Ojai, Oxnard, Redondo Beach, Rolling Hills Estates, Santa Monica, Sierra Madre, South Pasadena, Thousand Oaks, Ventura, and West Hollywood), with a combined population of 2 million people, have enrolled in 100%, making CPA the largest provider of renewable energy in the country. Last week, Hermosa Beach voted to join CPA and go to 100%.

Here is the latest breakdown of default levels:



Behavioral economics research has shown that defaults have immense power to affect outcomes. By setting the default at 100% renewable, you will get much more participation at that level than if you set it at a lower tier. Only a small percentage of customers will opt down, most will remain at 100%. Likewise, if you set the default at a lower tier, that's mostly what you'll get. Few will opt up, not because they don't want to, often just because of inertia or the busyness of life. This has proven true for our cities in Clean Power Alliance; over 90% of customers have stayed in at 100%.

CPA's 100% Green Power rate currently costs just 3% more than SCE's base rate, a nominal investment for significantly more renewable content and many long-term benefits like green jobs and greater energy independence and resiliency. While there's a slight rate savings in the lower tiers, it's important to factor in the costs associated with more polluting emissions and unmitigated climate change. The perception of saving a dollar or two in the short term is a dangerous illusion. For example, consider the billions of dollars in damages associated with California wildfires alone. Industry studies reveal there is overwhelming public support for renewable energy and people are willing to pay more for it.

Notably, low-income customers in CPA's 100% default communities get to participate at no extra cost. Those most financially vulnerable don't incur a bill premium, an important environmental and economic justice provision.

A key benefit of community choice energy is that customers have more choices. The 100% default isn't forcing anything on anyone, it's simply a suggestion, and customers have the

freedom to choose another plan according to their own preferences and priorities. It's easy to opt down or opt out.

We're already experiencing the effects of climate change firsthand in our communities, with persistent drought and more severe and frequent heat waves and wildfires. Climate scientists issued an alarming 'code red for humanity' in the latest UN IPCC report, warning us that governments at all levels everywhere must take immediate and unprecedented action to cut emissions. This means how you, as elected leaders of your city, respond is critical and has an impact far beyond your city boundaries. The good news is there are solutions like the Green default to help us get where we need to go, and local governments are responding. To date, 35 municipalities throughout California have adopted a 100% renewable default so you would be in great company.

The default plans we select today will impact the amount of renewable energy powering us into the future. This is likely one of the biggest impact decisions you will make as leaders of your community. Renewable energy is now readily available and affordable. It would be fantastic to have Monrovia help the way in the transition off fossil fuels to a cleaner, healthier, and more sustainable tomorrow for us all.

I have served on the CPA board for Ojai since the beginning and have been spearheading [efforts](#) for the 100% default, so am happy to serve as a resource if you have any questions. Please feel free to reach out.

Kind regards,

Michelle Ellison
414.915.4140
www.greenbydefault.org