



Canyon Park Update

Community Services Commission – Special Meeting

May 30th, 2023





Agenda

1. Update on Debris Removal
2. Overview of 90% Plan Design and discussion
3. Timeline for construction and enhancements





Background

- September 2020 - Bobcat Fire burned more than 115,000 acres, including portions of:
 - Hillside Wilderness Preserve
 - Canyon Park
 - Foothills above hillside neighborhoods of Monrovia
- Monrovia did not suffer any loss of life or structure
- Canyon Park closed for repairs, and reopened in August 2021
- Subsequently, the park has endured several more major storms including late December 2021, December 2022, January 2023 and late February/March 2023.





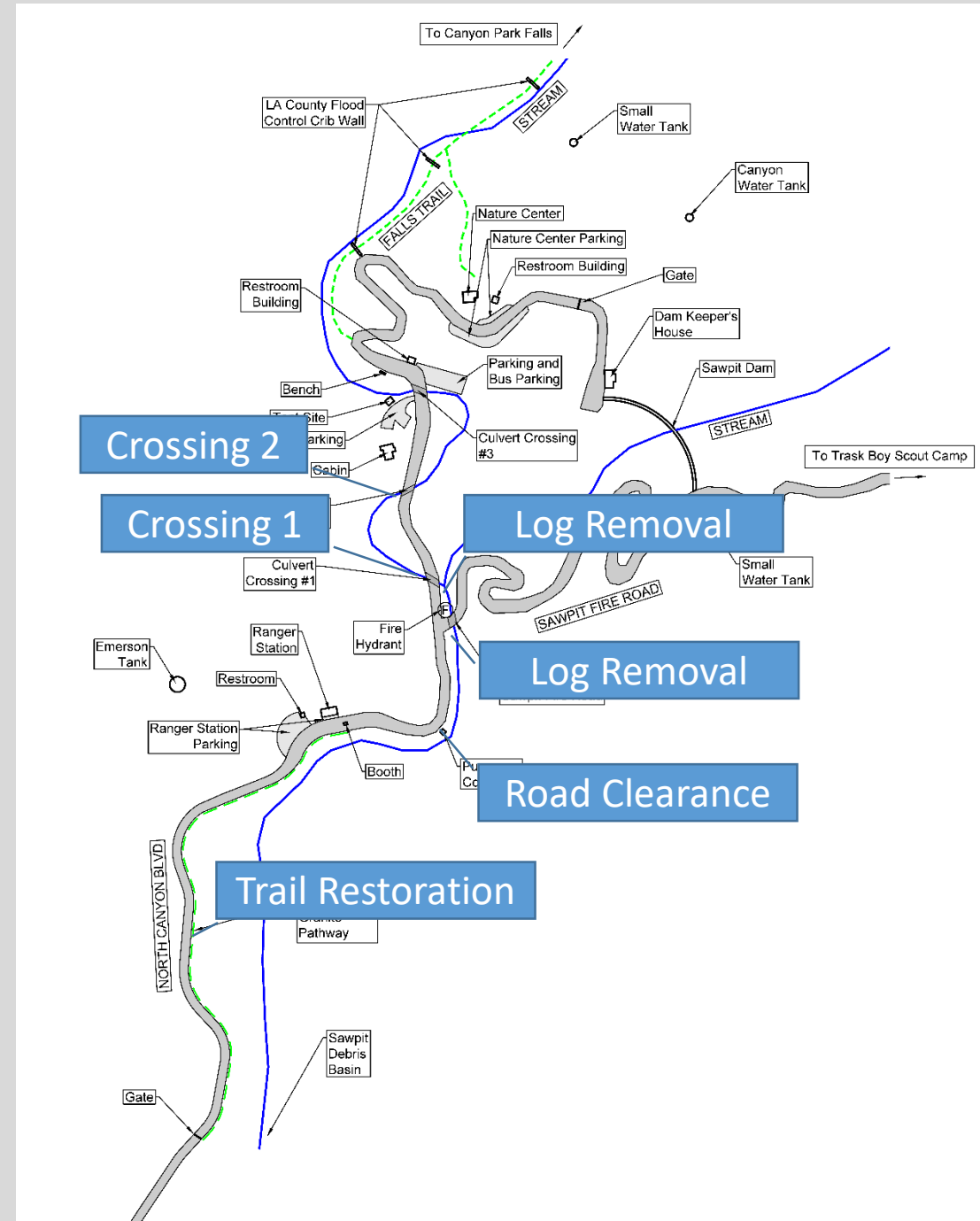
Debris Flows Damage Park

- December 14, 2021 - Rain storm caused debris and mudflows from Bobcat Fire burn area into Canyon Park, causing catastrophic damage to park facilities, including:
 - Roadways
 - Parking lots
 - Handrails
 - Fencing
 - Trails
 - Water systems
- December 21, 2021- City Council approved Resolution 2021-63, ratifying City Manager's Proclamation of the Existence of a Local Emergency
- Park is closed to the public, with much of the Park inaccessible to staff



Repair Project Tasks

- Debris Clearance and General Repairs
 - Fallen tree and log removal
 - Boulder removal
 - Clear roads and parking lots
 - Clear culverts at 3 stream crossings
 - Trail repairs
 - Road and Shoulder repairs





Debris from Spring

- Additional debris from the Spring 2023 storms caused a slide of debris. Debris removal and clean-up is set to start within the next 2 weeks.



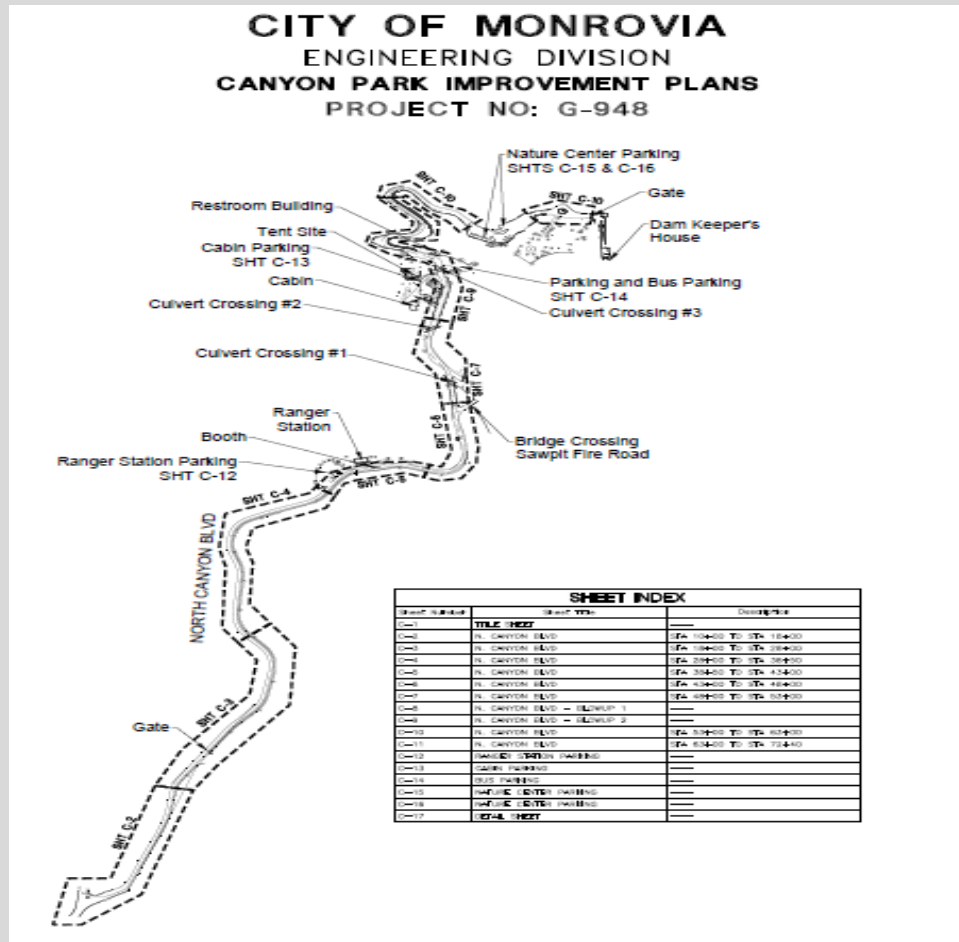


Road Repair – Below the Nature Center





Preliminary Design

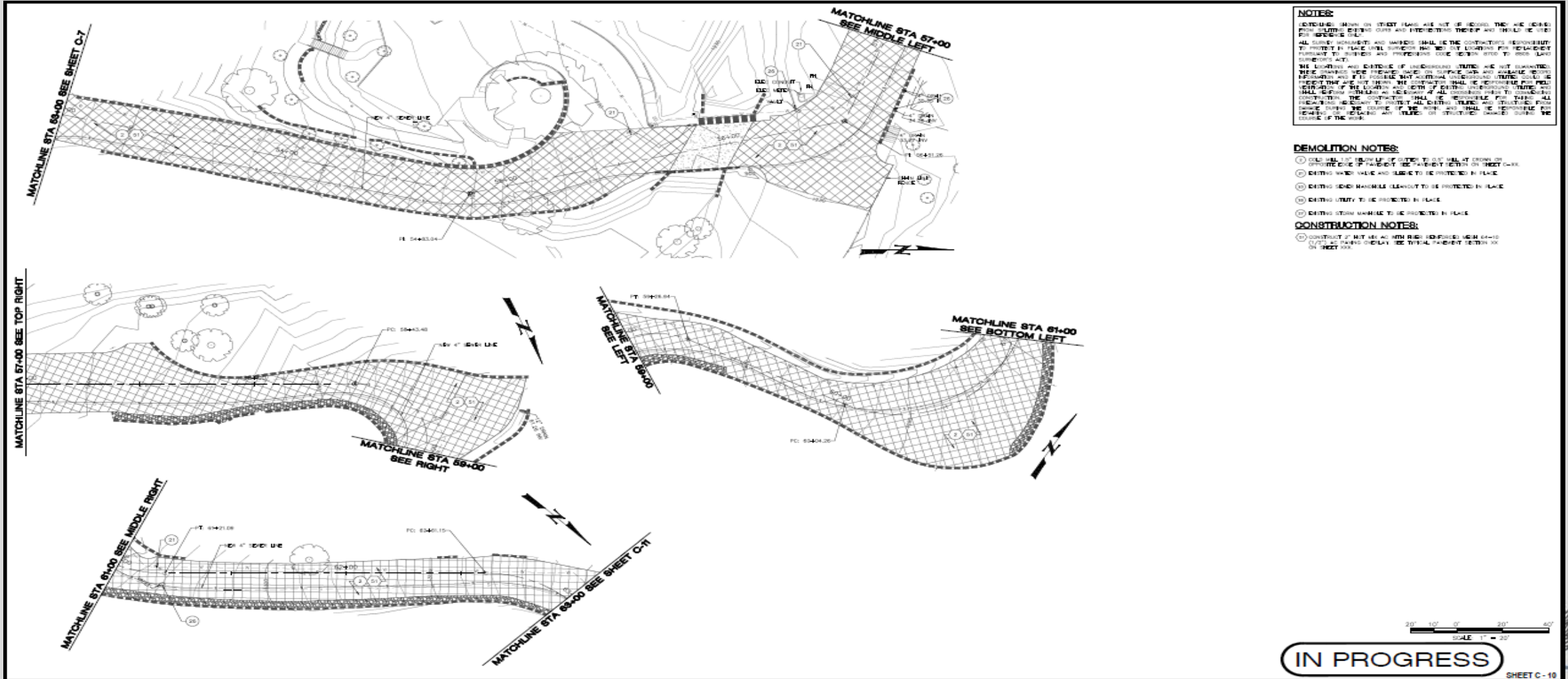


- Project scope:
 - Road Repair
 - Parking lot improvements
 - Road/Shoulder reconstruction
 - Drainage improvements
 - Site preparation for proposed enhancements



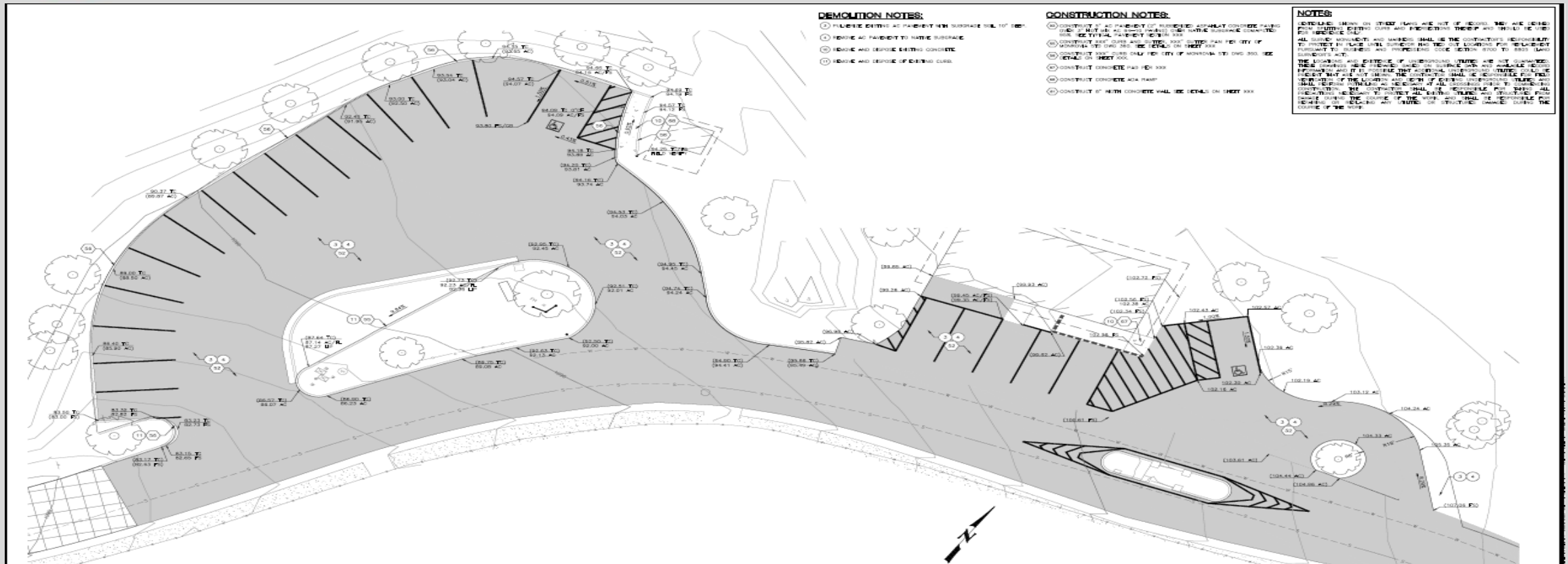


Preliminary Design – Road Repair





Preliminary Design – Parking Lot Repair



THE CONTRACTOR IS REQUIRED BY GOVERNMENT CODE 4216 "CALIFORNIA ONE CALL LAW" TO CALL 811 FIRST AT LEAST TWO (2) WORKING DAYS BEFORE BEGINNING CONSTRUCTION. IT IS REQUIRED BY STATE CODE TO MAKE CALLS TO THE "CENT" OF THE CITY OF MONROVIA. OTHER IS THE CITY OF MONROVIA UNDERGROUND FACILITY. YOU CAN OBTAIN THE CITY OF MONROVIA "ONE CALL" FORM FROM THE CITY.

811
Know what's below.
Call before you dig.

BENCHMARK
24-04-1100 (24-04-1100) T.M.C. OF BRASS BELL
LOCATION: ON THE WEST ALONG HUNTERDON BLVD FROM THE CENTER OF MONROVIA, CALIF. IN THE CITY OF MONROVIA, CALIF. SOUTH OF THE CENTER OF THE SITE, ONE (1) FOOT SOUTH OF THE CENTER OF THE NORTH CONCRETE CURBLINE.

RECORDED:
BOOK: 528.01 DATE: 1/14/10

BASIS OF BEARINGS
CALIFORNIA STATE PLANE COORDINATE SYSTEM, ZONE 10
NAD 83 CONTROL POINT, MONROVIA, CALIF. (NAD 83)
NAD 83 CONTROL POINT, MONROVIA, CALIF. (NAD 83)

MERRELL JOHNSON

6140 S. MERRELL R.D.E 49423

AS-BUILT DRAWING
I HEREBY CERTIFY THAT THE WORK SHOWN ON THIS DRAWING WAS DONE BY ME OR UNDER MY CLOSE PERSONAL SUPERVISION AND TO THE BEST OF MY KNOWLEDGE AND BELIEF IT COMPLY WITH ALL CITY ORDINANCES AND REGULATIONS AND I AM NOT PROVIDING ANY WARRANTIES OR REPRESENTATIONS.

SIGNATURE DATE

DATE	SIGNATURE	DELTA	REVISION DESCRIPTION	DATE	APPROVED	PLANNED DESIGN	APPROVED

CITY INSPECTOR (AS-BUILT REQUIRED)

CONTRACTOR (AS-BUILT REQUIRED)

IN PROGRESS

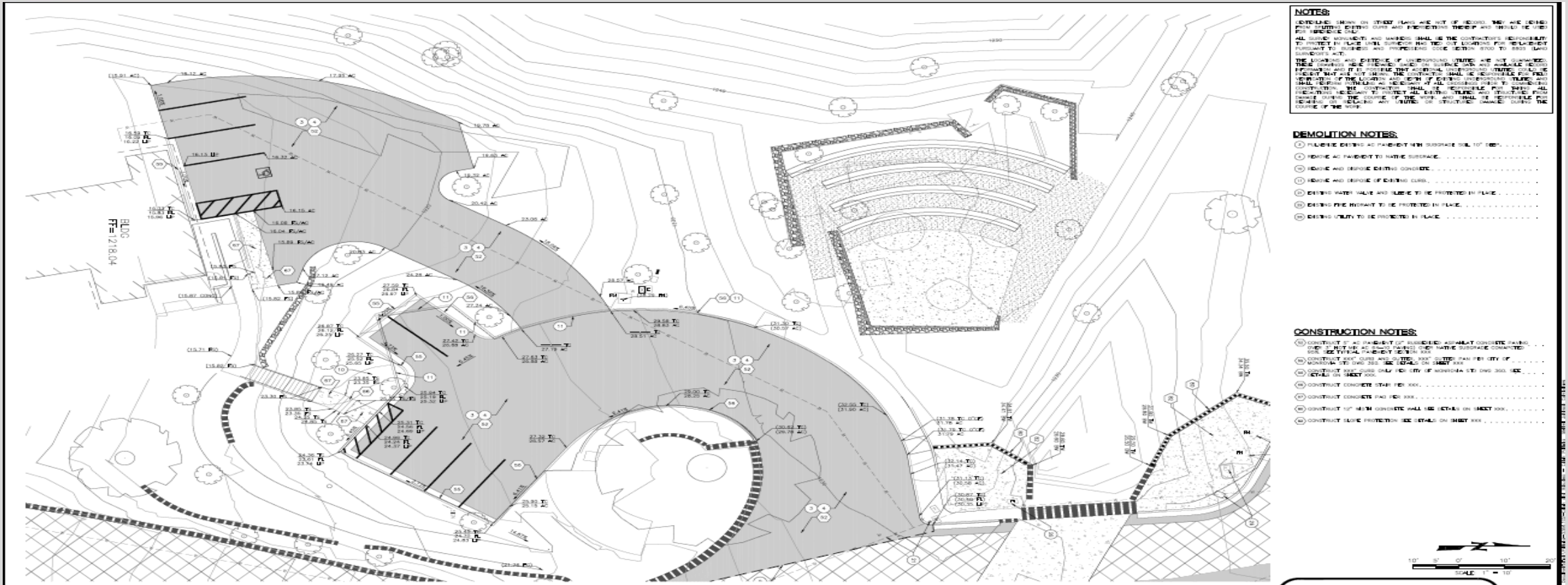
SHEET C - 12

CITY OF MONROVIA
1200 NORTH MAIN STREET
CANYON PARK IMPROVEMENT PLANS
RANGER STATION PARKING

PROJECT NO.: 1075016 (SHARON)
DATE: 04/27/2013
SCALE: AS SHOWN
DRAWN BY: JG
CHECKED BY: JG
DATE: 04/27/2013
SHEET 12 OF 23



Preliminary Design – Parking Lot Repair



NOTES:

EXISTING SHOWN ON STREET PLANS ARE NOT TO BE USED FOR REFERENCE ONLY.

ALL EXISTING WORKMANSHIP AND MATERIALS SHALL BE THE CONTRACTOR'S RESPONSIBILITY TO PROTECT IN PLACE UNLESS SPECIFIED OTHERWISE FOR REMOVAL. CONTRACTOR SHALL BE RESPONSIBLE FOR PROTECTING ALL UTILITIES AND STRUCTURES TO REMAIN FROM DAMAGE DURING THE COURSE OF THE WORK.

- DEMOLITION NOTES:**
- ① EXISTING EXTERIOR FINISHES TO REMAIN UNLESS OTHERWISE NOTED.
 - ② EXISTING ASPHALT TO REMAIN UNLESS OTHERWISE NOTED.
 - ③ EXISTING AND DEMOLISH EXISTING CONCRETE.
 - ④ EXISTING AND DEMOLISH EXISTING CURBS.
 - ⑤ EXISTING WATER MAINS AND SLICES TO BE PROTECTED IN PLACE.
 - ⑥ EXISTING FIRE MAINS TO BE PROTECTED IN PLACE.
 - ⑦ EXISTING UTILITIES TO BE PROTECTED IN PLACE.

- CONSTRUCTION NOTES:**
- ① CONSTRUCT 2" AC (48) MINIMUM SUBGRADE, ASPHALT CONCRETE PAVING UNLESS OTHERWISE NOTED.
 - ② CONSTRUCT 4" (100) MINIMUM SUBGRADE, ASPHALT CONCRETE PAVING UNLESS OTHERWISE NOTED.
 - ③ CONSTRUCT 4" (100) MINIMUM SUBGRADE, ASPHALT CONCRETE PAVING UNLESS OTHERWISE NOTED.
 - ④ CONSTRUCT 4" (100) MINIMUM SUBGRADE, ASPHALT CONCRETE PAVING UNLESS OTHERWISE NOTED.
 - ⑤ CONSTRUCT 4" (100) MINIMUM SUBGRADE, ASPHALT CONCRETE PAVING UNLESS OTHERWISE NOTED.
 - ⑥ CONSTRUCT 4" (100) MINIMUM SUBGRADE, ASPHALT CONCRETE PAVING UNLESS OTHERWISE NOTED.
 - ⑦ CONSTRUCT 4" (100) MINIMUM SUBGRADE, ASPHALT CONCRETE PAVING UNLESS OTHERWISE NOTED.

THE CONTRACTOR IS REQUIRED BY GOVERNMENT CODE 4218 "CALIFORNIA ONE CALL LAW" TO CALL 811 AT LEAST 144 HOURS BEFORE ANY EXCAVATION. CONTRACTOR IS REQUIRED BY STATE CODE TO HANDLEDISE TO THE POINT OF NO CONTACT AT OR OTHER SIDE OF THE UNDERGROUND UTILITY SO YOU CAN DETERMINE ITS EXACT LOCATION BEFORE USING POWER EQUIPMENT.

811
Know what's below.
Call before you dig.

BENCHMARK
LOCATION: 1/4" SCALE BENCHMARK "BM", 3" BRASS DISK
LOCATION: 1/4" SCALE BENCHMARK "BM", 3" BRASS DISK
1/4" SOUTH OF THE CENTER LINE OF THE ROAD, 1/4" WEST OF THE CENTER LINE OF THE ROAD, 1/4" SOUTH OF THE CENTER LINE OF THE ROAD, 1/4" WEST OF THE CENTER LINE OF THE ROAD.

BASIS OF BEARINGS
CALIFORNIA 27-15 PLANE CONVENTION (NAD 83) N
NAD 83 CONVERSION TABLE ON
NO. CONTROL POINT "4254" 1/4" 1/4" (1/4" 1/4")

MERRELL JOHNSON

MERRELL JOHNSON ENGINEERS INC.
2222 S. BRADY BLVD., SUITE 100
SACRAMENTO, CA 95811
TEL: 916.442.1111 FAX: 916.442.1112

PROFESSIONAL ENGINEER
No. C-19423
State of California

BRAD S. MERRELL P.E. 19423

AS-BUILT DRAWING

I HEREBY CERTIFY THAT THE WORK SHOWN ON THIS DRAWING WAS DONE IN ACCORDANCE WITH THE SPECIFICATIONS AND CONDITIONS OF CONTRACT AND APPROVED BY ME AS SHOWN ON THIS DRAWING.

DATE: _____ SIGNATURE: _____

DATE	SIGNATURE	DELTA	REVISION DESCRIPTION	DATE	APPROVED	PROJECT/CLIENT	REFERENCE

IN PROGRESS

CITY OF MONROVIA
DEPARTMENT OF PUBLIC UTILITIES
CANYON PARK IMPROVEMENT PLANS
CABIN PARKING

DATE: 04/21/2023
SCALE: AS SHOWN
DRAWN BY: G-948
CHECKED BY: G-948
PROJECT NO: 15-07





Preliminary Design – Parking Lot Repair

DEMOLITION NOTES:

- 1. REMOVE EXISTING ASPHALT PAVEMENT WITH SUBGRADE TO 10" DEEP.
- 2. REMOVE ASPHALT TO MATCH SUBGRADE.
- 3. REMOVE AND DEMOLISH EXISTING CONCRETE.
- 4. REMOVE AND DEMOLISH EXISTING CURBS.

CONSTRUCTION NOTES:

- 1. CONSTRUCT 4" AS-PAVEMENT OF REINFORCED ASPHALT CONCRETE FLEEDGE OVER 12" NATURAL SAND SUBGRADE. REINFORCING CONTRACTOR TO PROVIDE WITH PROPER TENSILE STRENGTH.
- 2. CONSTRUCT ASPHALT CURBS AND INTERLOCKED CURBS FROM CITY OF MONROVIA STD 200 AND STD 300. SEE DETAILS ON SHEET 100.
- 3. CONSTRUCT 10" SUB-BASE DUMPED CITY OF MONROVIA STD 200 AND STD 300. SEE DETAILS ON SHEET 100.
- 4. CONSTRUCT CONCRETE PAD AND CURB.
- 5. CONSTRUCT CONCRETE ADA RAMP.
- 6. CONSTRUCT 6" WITH CONCRETE WALL. SEE DETAILS ON SHEET 100.

NOTES:

EXISTING CURBS, MARKS ON EXISTING PLANS ARE NOT TO BE MOVED, THEY ARE LEAVE FOR THE CONTRACTOR TO MAINTAIN AND PROTECT THEM AND SHOULD BE USED FOR REFERENCE ONLY.

ALL SURFACE MEASUREMENTS AND MARKINGS SHALL BE THE CONTRACTOR'S RESPONSIBILITY TO VERIFY IN PLACE. SHALL COMPARE WITH THE SURVEYING FOR ACCURACY TO SURFACE TO SURFACE AND PROPOSED CODE SECTION 5700 TO 5800 (LAND SURVEYING ACT).

THE CONTRACTOR SHALL VERIFY ALL DIMENSIONS, PLUMB AND SQUARE. THE CONTRACTOR SHALL BE RESPONSIBLE FOR THE ACCURACY OF THE EXISTING AND PROPOSED PLANS AND MARKINGS. THE CONTRACTOR SHALL BE RESPONSIBLE FOR THE ACCURACY OF THE EXISTING AND PROPOSED PLANS AND MARKINGS. THE CONTRACTOR SHALL BE RESPONSIBLE FOR THE ACCURACY OF THE EXISTING AND PROPOSED PLANS AND MARKINGS.

1" = 20'
SCALE: 1" = 20'

IN PROGRESS

SHEET C - 12

THE CONTRACTOR IS REQUIRED BY GOVERNMENT CODE 4209 "CALIFORNIA ONE CALL LAW" TO CALL ONE DAY AT LEAST TWO (2) WORKING DAYS BEFORE DIGGING. CONTRACTOR IS REQUIRED BY STATE CODE TO HAND-DIG TO THE FRONT OF THE PROPERTY TO IDENTIFY ALL UTILITIES AND UNDERGROUND FACILITIES. YOU CAN BE HELD LIABLE FOR ANY DAMAGE TO THESE UTILITIES.

811
Know what's below.
Call before you dig.

BENCHMARK
LOCATION: CORNER BENCHMARK "TWO" OF GRASSY LOT
LOCATION: 01.50 FEET WEST ALONG NEUTRAL BOUNDARY FROM THE CENTERLINE OF THE DRIVEWAY TO THE CENTERLINE OF THE DRIVEWAY AND 1.50 FEET SOUTH OF THE DRIVEWAY. THE DRIVEWAY IS 12 FEET WIDE AND THE DRIVEWAY IS 12 FEET SOUTH OF THE DRIVEWAY. THE DRIVEWAY IS 12 FEET SOUTH OF THE DRIVEWAY.

RECORD: _____ DATE: _____

BASIS OF BEARINGS
CALIFORNIA PLUMBING SUBORDINATE SYSTEM, CODE V
NAD 83 DATUM, LOCAL EQUIVALENT: TIA 80, 0N
MAG. CORRECTION: 0.0001, 1.12, 1.12 (1.12)

MERRELL JOHNSON

MERRELL JOHNSON ENGINEERING INC.
22550 LAKEVIEW BLVD., SUITE 100
THERMOPOLIS, MONTANA 59089
406.866.8000 • WWW.MERRELLJOHNSON.COM

049423 M. MERRELL P.E. 049423

AS-BUILT DRAWING

I HEREBY CERTIFY THAT THE WORK SHOWN ON THIS DRAWING WAS ACCURATELY FIELD CHECKED BY ME OR A LICENSED PROFESSIONAL ENGINEER OR SURVEYOR AND APPROVED ON BEHALF OF THE ENGINEER OR SURVEYOR.

DATE _____ SIGNATURE _____

DATE	SIGNATURE	DELTA	REVISION DESCRIPTION	DATE	APPROVED

CITY ENGINEER (REQUIRED)

CITY OF MONROVIA
DEPARTMENT OF PUBLIC UTILITIES
**CANYON PARK IMPROVEMENT PLANS
RANGER STATION PLANS**

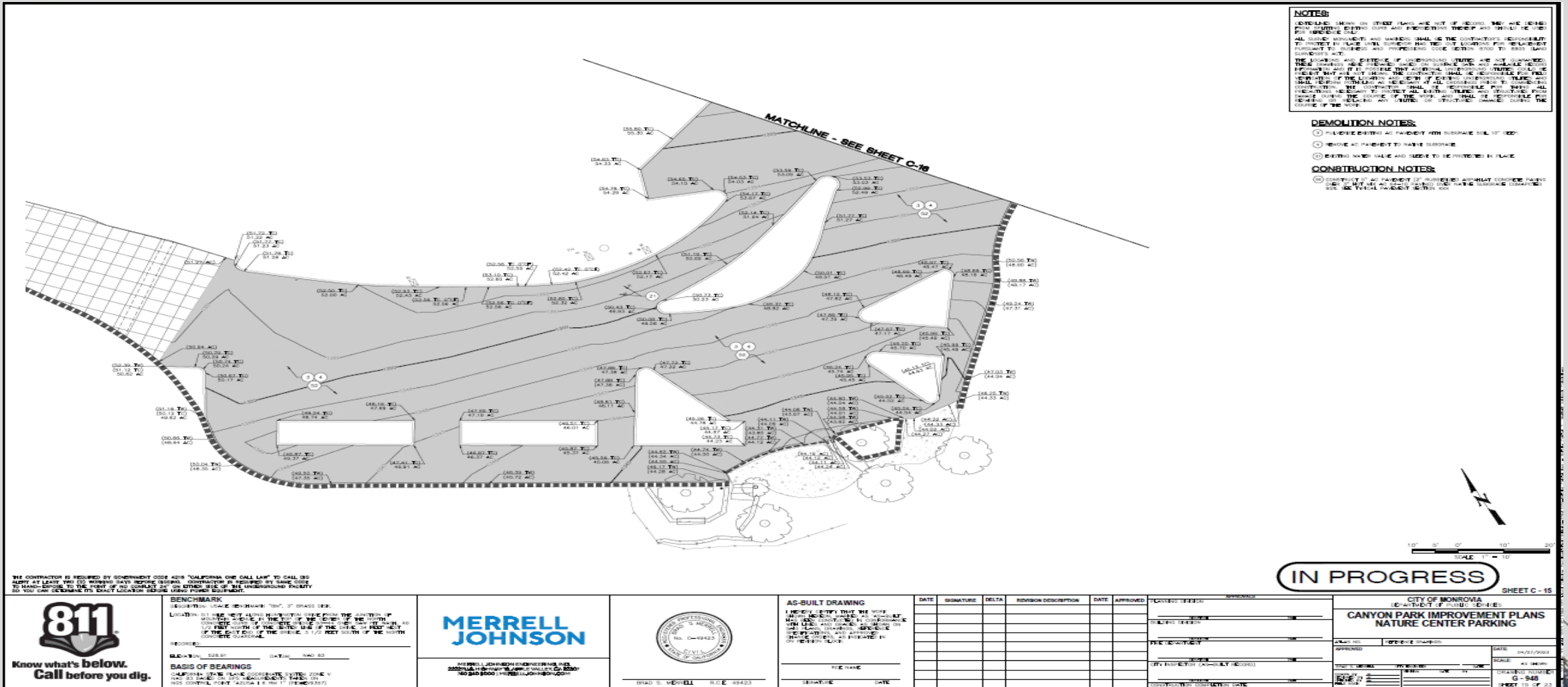
PROJECT NO: _____ SHEET NO: _____ DATE: 04/09/2024

SCALE: AS SHOWN
DRAWN BY: _____ DATE: _____
CHECKED BY: _____ DATE: _____
DESIGNED BY: _____ DATE: _____

G-946
SHEET 12 OF 21



Preliminary Design – Parking Lot Repair



NOTES:

1. UTILITIES SHOWN ON STREET PLANS ARE NOT OF RECORD. THEY ARE LOCATED FROM EXISTING RECORDS AND FIELD SURVEYS. CONTRACTOR SHALL VERIFY ALL UTILITIES BEFORE ANY CONSTRUCTION. CONTRACTOR SHALL BE RESPONSIBLE FOR VERIFYING THE LOCATION AND DEPTH OF ALL UTILITIES PRIOR TO ANY CONSTRUCTION. CONTRACTOR SHALL BE RESPONSIBLE FOR OBTAINING ALL NECESSARY PERMITS FROM THE CITY OF MONROVIA AND THE CALIFORNIA PUBLIC UTILITIES COMMISSION (CPUC) PRIOR TO ANY CONSTRUCTION.

2. THE CONTRACTOR SHALL BE RESPONSIBLE FOR OBTAINING ALL NECESSARY PERMITS FROM THE CITY OF MONROVIA AND THE CALIFORNIA PUBLIC UTILITIES COMMISSION (CPUC) PRIOR TO ANY CONSTRUCTION.

- DEMOLITION NOTES:**
- 1. REMOVE EXISTING ASPHALT PAVEMENT WITH SUBGRADE SOIL TO 10" DEPTH.
 - 2. REMOVE ASPHALT PAVEMENT TO EXPOSE SUBGRADE.
 - 3. EXISTING WATER MAIN AND SEWER TO BE PROTECTED IN PLACE.
- CONSTRUCTION NOTES:**
- 1. CONSTRUCTION OF ASPHALT PAVEMENT TO BE IN ACCORDANCE WITH THE CITY OF MONROVIA STANDARD SPECIFICATIONS FOR ASPHALT PAVEMENT.

THE CONTRACTOR IS REQUIRED BY GOVERNMENT CODE 4209 "CALIFORNIA ONE CALL LAW" TO CALL 811 AHEAD AT LEAST TWO (2) WORKING DAYS BEFORE BEGINS CONSTRUCTION TO BE REQUIRED BY SAME CODE TO MAKE KNOWN TO THE POINT OF NO CONTACT OR THE STRIKE SIDE OF THE UNDERGROUND FACILITY SO YOU CAN DETERMINE ITS EXACT LOCATION (REGARDING).



BENCHMARK
 LOCATION: 01.00 TO 01.01 AC
 LOCATION: 01.00 TO 01.01 AC
 LOCATION: 01.00 TO 01.01 AC
 LOCATION: 01.00 TO 01.01 AC

BASIS OF BEARINGS
 CALIFORNIA STATE PLANE COORDINATE SYSTEM ZONE 4
 NAD 83
 NAD 83
 NAD 83

MERRELL JOHNSON

MERRELL JOHNSON ENGINEERING INC.
 220015 HIGHWAY 99, SUITE 100, MONROVIA, CA 91701
 909.240.8500 | MERRELLJOHNSON.COM

BRAD S. MERRILL P.E. #9423

AS-BUILT DRAWING

I HEREBY CERTIFY THAT THE WORK SHOWN ON THIS DRAWING WAS DONE BY ME OR UNDER MY CLOSE PERSONAL SUPERVISION AND TO THE BEST OF MY KNOWLEDGE AND BELIEF IT COMPLIES WITH ALL CITY, STATE AND FEDERAL REQUIREMENTS AND APPROVED FOR CONSTRUCTION.

DATE: _____ SIGNATURE: _____

DATE	SIGNATURE	DELTA	REVISION DESCRIPTION	DATE	APPROVED	PROJECT OFFICER	SPONSOR

IN PROGRESS

CITY OF MONROVIA
 (E-CITY OF MONROVIA)
**CANYON PARK IMPROVEMENT PLANS
 NATURE CENTER PARKING**

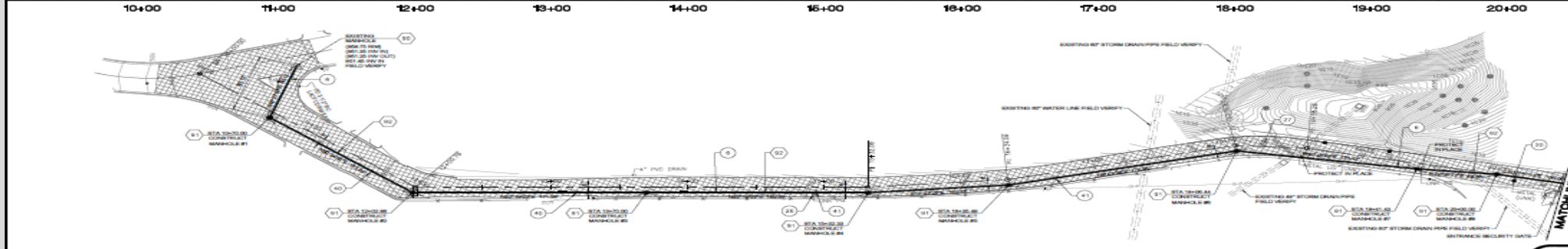
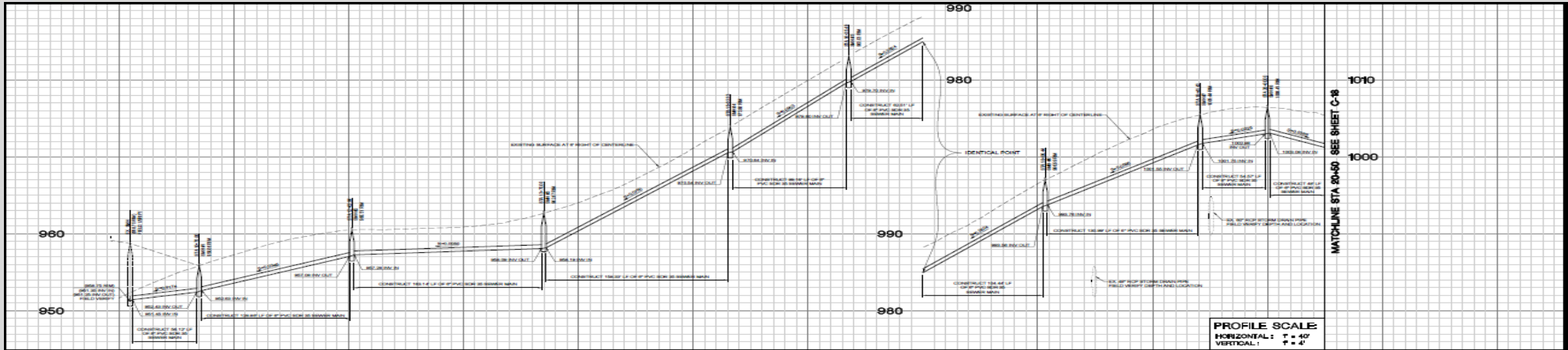
SCALE: AS SHOWN
 SHEET NO. C-10B
 SHEET 10 OF 20



Parking Location Type	Before	After
Lower Lot	16	15
Lower Lot ADA	1	1
Lower Lot Bus	1	1
Ranger Station	4	5
Ranger Station Turn Around	2	3
Ranger Station ADA	1	1
Sycamore Parking (Dirt)	8	15
Creek Side Parking	0	7
Cabin	7	10
Cabin ADA	2	1
Middle Parking Lot	7	14
Middle Parking Lot ADA	1	1
Middle Parking Lot Bus	2	2
Upper Parking Lot	32	32
Upper Parking Lot ADA	3	3
TOTAL VEHICLE PARKING	87	111



Preliminary Design – Sewer Improvements



- DEMOLITION NOTES:**
- 1. EXISTING SURVEY MONUMENTS TO BE PROTECTED IN PLACE
 - 2. EXISTING UTILITY TO BE PROTECTED IN PLACE
 - 3. EXISTING STORM DRAINAGE TO BE PROTECTED IN PLACE
 - 4. REMOVE AND DISPOSE / SALVAGE EXISTING REINFORCED CONCRETE
 - 5. REMOVE AND DISPOSE / SALVAGE EXISTING WATER MAINS
- CONSTRUCTION NOTES:**
- 1. CONNET TO EXISTING REINFORCED CONCRETE PER DETAIL ON SHEET 02
 - 2. CONNET TO EXISTING REINFORCED CONCRETE PER DETAIL ON SHEET 02
 - 3. SEE DETAIL PER SHEET 02
 - 4. INSTALL 6" PVC 30' 30' 30' 30'

THE CONTRACTOR IS REQUIRED BY GOVERNMENT CODE SECTION 4216 "CALIFORNIA ONE CALL LAW" TO CALL 811 AT LEAST 72 HOURS BEFORE ANY EXCAVATION BEGINS. CONTRACTOR IS REQUIRED BY SAME CODE TO MAINTAIN ACCESS TO ALL UTILITIES AND TO OBTAIN A COPY OF ALL UNDERGROUND FACILITY TO YOU CAN OBTAIN ITS EXACT LOCATION BEFORE YOU BEGIN ANY EXCAVATION.

811
Know what's below.
Call before you dig.

BENCHMARK
ELEVATION: 528.07
DATE: 04/27/2023

BASIS OF BEARINGS
CALIFORNIA STATE PLANE COORDINATE SYSTEM ZONE 10
NAD 83 DATUM ON THE BASIS OF THE STATE OF BEARING
NAD 83 CONTROL POINT 4216-A-1 (NAD 83) (11/09/97)

MERRELL JOHNSON
MERRELL JOHNSON ENGINEERING INC.
2550 HUNTER DRIVE, SUITE 100, MONROVIA, CA 91701
909.310.1000 | INFO@MERRELLJOHNSON.COM

DR. S. MERRILL R.O.E. 49423
PROF. CIVIL ENGINEER
No. 05-9423
STATE OF CALIFORNIA

AS-BUILT DRAWING
I HEREBY CERTIFY THAT THE WORK SHOWN ON THIS DRAWING WAS DONE BY ME OR UNDER MY CLOSE PERSONAL SUPERVISION AND TO THE BEST OF MY KNOWLEDGE AND BELIEF IT ACCURATELY REPRESENTS THE ACTUAL WORK DONE.

DATE: _____
SIGNATURE: _____
TITLE: _____

DATE	SIGNATURE	DELTA	REVISION DESCRIPTION	DATE	APPROVED

DATE	APPROVED

IN PROGRESS

CITY OF MONROVIA
DEPARTMENT OF PUBLIC UTILITIES
CANYON PARK IMPROVEMENT PLANS
SEWER

DATE: 04/27/2023
SCALE: AS SHOWN
DRAWING NUMBER: G-948
SHEET 17 OF 23



VETERANS MEMORIAL



CANYON PARK EDUCATIONAL CENTER

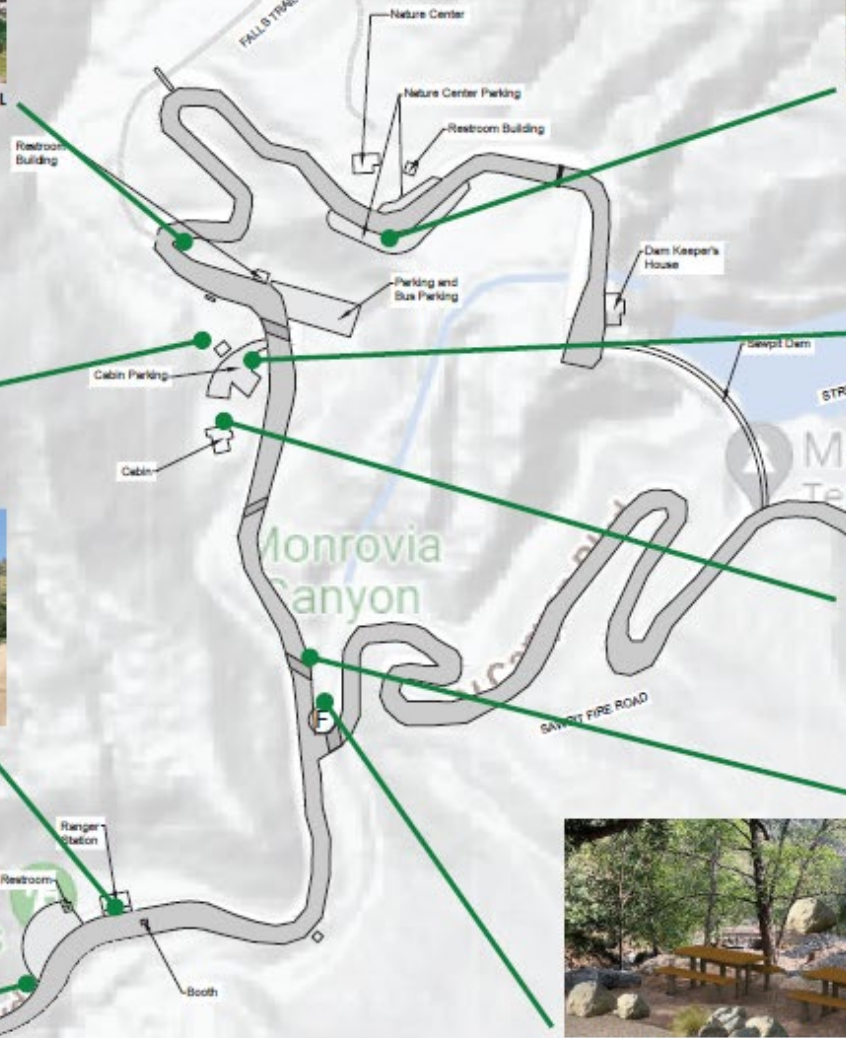


ENTRANCE KIOSK



ENTRANCE AND ART PIECE

To Canyon Park Falls
FALLS TRAIL



OVERLOOK



PARKING LOT REST AREA



NEW PARKING STALL AND ADA ACCESS



RAISED DECK



NEW PARKING AND PICNIC AREA

MAP OF PROPOSED IMPROVEMENTS
CANYON PARK / CITY OF MONROVIA



AFTER



BEFORE



FEATURES

- LOW MAINTENANCE DROUGHT TOLERANT PLANTING
- SCULPTURE IN HONOR OF FIRE FIGHTERS AND PARK RANGERS
- PICNIC TABLES

BEFORE AND AFTER RENDERING: ENTRANCE CANYON PARK / **CITY OF MONROVIA**

DECEMBER 2022



AFTER



FEATURES

- PICNIC TABLES
- LOW MAINTENANCE DROUGHT TOLERANT PLANTING
- SCULPTURE IN HONOR OF PARK RANGERS
- DECOMPOSED GRANITE PAVING

BEFORE



BEFORE AND AFTER RENDERING: ENTRANCE CANYON PARK / **CITY OF MONROVIA**

DECEMBER 2022



AFTER



FEATURES

- NEW ENCLOSED KIOSK FOR TWO PEOPLE (6' X 10')
- WINDOWS AND HVAC, STORAGE, COMPUTER AREA
- DOUBLE DUTCH DOORS FOR VISITOR INTERACTION
- SLOT FOR PAYMENT
- DROUGHT TOLERANT PLANTING



BEFORE

BEFORE AND AFTER RENDERING: ENTRANCE KIOSK
CANYON PARK / **CITY OF MONROVIA**

DECEMBER 2022



AFTER



FEATURES

- DECOMPOSED GRANITE PARKING LOT
- PICNIC TABLES WITH VIEW OF STREAM
- BOULDERS TO EDGE LOT
- NEW DROUGHT TOLERANT LANDSCAPING AND MULCH

BEFORE



BEFORE AND AFTER RENDERING: NEW PARKING BY STREAM
CANYON PARK / **CITY OF MONROVIA**

DECEMBER 2022



AFTER



FEATURES

- RAISED DECK OVER GRADE TO LIMIT ENVIRONMENTAL IMPACTS
- ACCESS TO NEW DG PARKING LOT
- BENCH

BEFORE



BEFORE AND AFTER RENDERING: RAISED DECK
CANYON PARK / **CITY OF MONROVIA**

DECEMBER 2022



AFTER



FEATURES

- DECOMPOSED GRANITE WITH CURB EDGING
- TWO PICNIC TABLES
- BEAR BOX TRASH RECEPTACLE
- DROUGHT TOLERANT LANDSCAPING

BEFORE



BEFORE AND AFTER RENDERING: PARKING LOT REST AREA
CANYON PARK / **CITY OF MONROVIA**

DECEMBER 2022



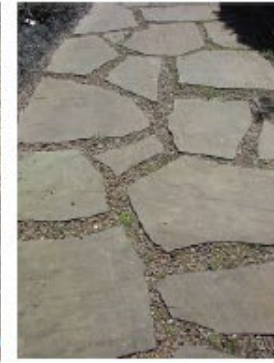
FEATURES

- NEW ASPHALT PARKING LOT AND DRIVEWAY FOR CABIN
- ONE ADA PARKING STALL
- ACCESSIBLE CONCRETE PATH FROM PARKING TO CABIN
- DROUGHT TOLERANT LANDSCAPING
- NEW UNDERCANOPY TREES



BEFORE AND AFTER RENDERING: NEW PARKING AREA AND ADA ACCESS
CANYON PARK / CITY OF MONROVIA

DECEMBER 2022



FEATURES

- TIERED GABION SEAT WALLS FILLED WITH RIVER ROCK OR REPURPOSED TREE TRUNKS
- TREX WOOD SEAT TOPS
- OPEN GATHERING SPACE WITH DECOMPOSED GRANITE
- NATIVE PLANTING FOR EDUCATIONAL TALKS

BEFORE AND AFTER RENDERING: CANYON PARK EDUCATIONAL CENTER
CANYON PARK / CITY OF MONROVIA

DECEMBER 2022



FEATURES

- DECOMPOSED GRANITE WALKWAY LEADS TO VETERANS MEMORIAL
- LARGE BOULDERS ANCHOR SITE TO CREATE A DESTINATION
- BENCH SEATING
- MINOR VEGETATION REPLACEMENT WITH NATIVE PLANTING

BEFORE AND AFTER RENDERING: VETERANS MEMORIAL
CANYON PARK / **CITY OF MONROVIA**

DECEMBER 2022



FEATURES

- DECOMPOSED GRANITE PAVING
- SAFETY RAILING SIMILAR TO BRIDGE RAILING
- ADDED SITE BOULDERS TO DIRECT MOVEMENT
- BENCH SEATING
- TELESCOPE

BEFORE AND AFTER RENDERING: OVERLOOK
CANYON PARK / **CITY OF MONROVIA**

DECEMBER 2022



Work Status and Next Steps

- Estimated Schedule:
 - Staff is currently at 90% design plans for the Canyon Park Repair Project
 - August 2023: 100% Design Plans and bid documents
 - September 2023: Initiate RFP process, host pre-bid meeting and job walk.
 - October 2023: Receive and evaluate bids and award of contract.
 - November 2023: Project kick-off and construction starts (6-9 months of construction)
 - Fall or Winter 2024: Tentative Re-opening of Canyon Park



Next Steps

- Staff has also included the Dam Keeper's House as a future improvement.
- City Council approved a contract with Psomas for Canyon Park Recovery Plan
- Presentation to the City Council for formal approval of scope
- Continue working with CalOES, FEMA and other grant funding agencies



Questions?