



# RCM-2 Public Safety & Maintenance Activities at Station Square Park

City Council Regular Meeting

Presentation by: Dylan Feik, City Manager

November 7, 2023

# Agenda Outline

- ▶ Recent Increase in Homeless Activity
- ▶ Recent Efforts and Work to-date
- ▶ Next Steps

# Recent Communications

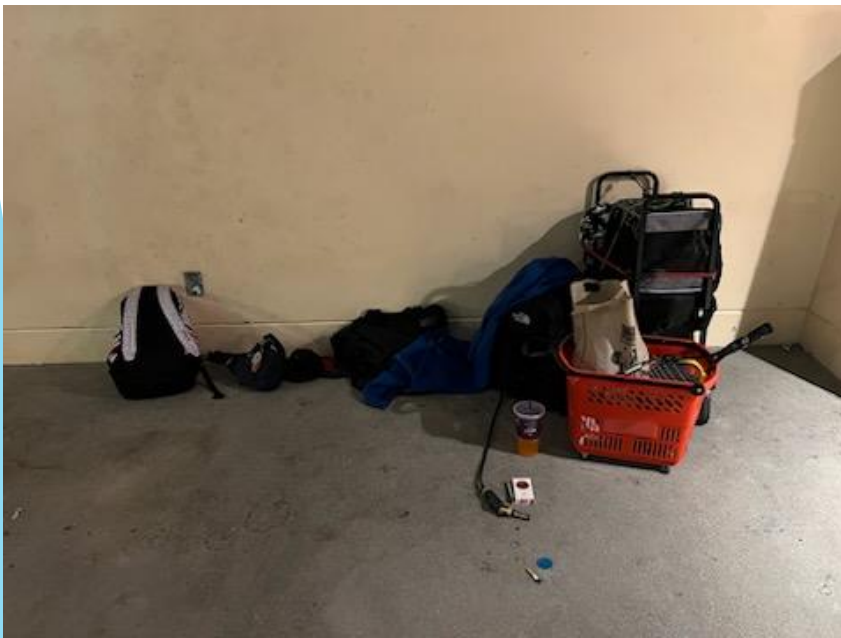
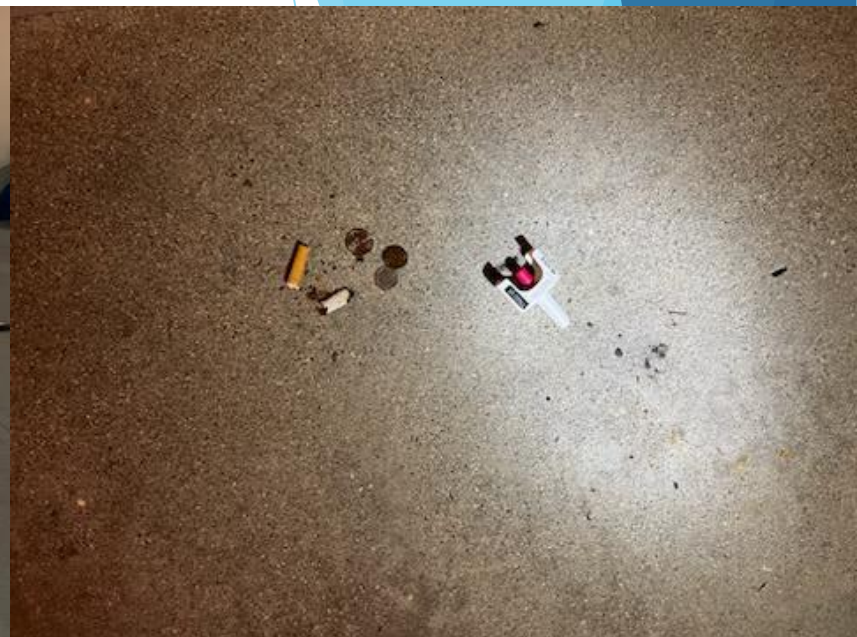
- ▶ “It bothers me that our local metro station frightens me”
- ▶ “I've been noticing a lot more where I live, between Old Town and the Metro Station, and it's rather alarming. I'm not sure if it's directly related to Metro's realignment from the Gold Line to the Blue Line but I also don't think it's a coincidence. Last week, my family was harassed by an older gentleman as we parked”
- ▶ “I feel unsafe, especially at night”

# City of Monrovia

## Plan to Prevent and Combat Homelessness

- ▶ Goal One - Be persistent in our contact with anyone suffering from homelessness
- ▶ Goal Two - Expand Community Coordination in support of ending homelessness
- ▶ Goal Three - Promote the use of the San Gabriel Valley Coordinated Entry System (CES)
- ▶ Goal Four - Develop educational materials to promote health and safety
- ▶ Goal Five\* - Develop a Monrovia-centric directed giving campaign
- ▶ Goal Six - Develop a Housing Displacement Response Plan

\*Following a review of our Homeless Plan in May 2023, staff advised we focus more on raising awareness for funding needs than an actual directed giving campaign focused on installation of donation pedestals



# Recent Citations at Station Square Park

Description	# of Citations (Sept-Oct)
Possession of Controlled Substance	10
Park Hours of Operation	12
Disorderly Conduct	2
Resisting Arrest	2
Miscellaneous <ul style="list-style-type: none"><li>• Assault w/ a Deadly Weapon</li><li>• Outstanding Warrants</li><li>• Smuggling of a Controlled Substance</li></ul>	5
Total:	31
Calls for Service	36



# Increased Maintenance Activities

- ▶ Staff has installed 4 “Park Maintenance” signs outlining the Mon-Fri maintenance schedule
- ▶ In addition, we’ve installed an additional 3 signs that state the MMC for abandoned property
- ▶ A-frames at 5 locations
- ▶ Installed 3 new trash receptacles along the greenway area behind MODA to address the trash and feces issues
- ▶ Utilized over 20 tons of mulch to refresh the planters throughout the park

## Weekly maintenance:

- ▶ Station Square Caretaker is at this facility everyday for trash and debris clean-up, graffiti removal, wipe down of signage, playground equipment, tables, benches. Minor landscaping maintenance.
- ▶ Mariposa maintains the landscaping on a weekly basis which includes trimming, replanting, mulching and litter pick-up.
- ▶ Part-time staff is **now assigned Friday-Sunday 6am-12pm** primarily to clean up trash and debris, wipe down of signage, playground equipment, tables, and benches. Will perform weed abatement as needed.





# Ongoing Parking Issues

- ▶ Park & Ride Lot is free and used heavily by “development” contractors
  - ▶ On-street parking is also heavily used by contractors which limits resident use
  - ▶ Resident use is nearly impossible because of contractor use
  - ▶ City must stay on top of homeless encampments in the parking areas
- ▶ Metro parking garage remains \$3/day and is heavily unused
  - ▶ Staff working with Metro on a proposal to use the parking garage during Station Square Transit Village Construction (which coincides with Metro ridership being unusually low)

# More to Come...

- ▶ Painting approximately 450 lineal feet of cinderblock wall. Will add anti-graffiti barrier
- ▶ Removed 12 benches and will re-sand
- ▶ Installation of additional MMC signage 10-12 signs along Station Square (wall)
- ▶ Continue to trim trees (trimming is scheduled for the next 2 weeks)
- ▶ Researching new camera equipment to replace existing equipment
- ▶ Addition of LiveView Technologies Equipment

# LiveView Technologies

- ▶ Live Surveillance, Intrusion Detection & 24/7 Monitoring
- ▶ Speaker System, Lighting and One-Way Communication
- ▶ Live feed directly into MPD Dispatch Center which have full control of the cameras and audio equipment
- ▶ Solar Powered
- ▶ Low light visibility
- ▶ Installed as a free demonstration pilot project

## OUTDOOR SECURITY CAMERAS



# Historic Santa Fe Depot

- ▶ Work w/ Daylight Limited for Temporary Use as a City Office
- ▶ 1/3 of the building is renovated
- ▶ 2 working restrooms
- ▶ Does not have working HVAC system
- ▶ The plan is for staff to set up a work space for:
  - ▶ Police Officers to use and maintain a presence
  - ▶ Public Works for break periods and/or equipment
  - ▶ Code Enforcement drop in (as/if needed)
  - ▶ Community Services Event/Activity Staging













# List of Needed Improvements

## Interior

- ▶ Window Updates including tint and blinds
- ▶ Desks, Chairs, Tables
- ▶ Small appliances including mini-fridge and microwave
- ▶ Light fixtures and power accessories
- ▶ HVAC (Heat and AC)
- ▶ Filing Cabinets
- ▶ Office and Bathroom Supplies
- ▶ Snacks, drinking water
- ▶ Flat Screen for CCTV's
- ▶ Outdoor Red Phone for 911 to Dispatch / as well as phone line
- ▶ Interior Wall separating unusable area
- ▶ Janitorial Services

## Exterior

- ▶ Window Repairs (2 broken windows)
- ▶ Exterior CCTV Security Cameras
- ▶ Signage
- ▶ Automatic Code Key Lock for Building Entry
- ▶ Exterior Lighting

# Future Considerations

- ▶ **SGV CARE Program**
  - ▶ Staff has completed 4 of 7 trainings. Staff will present a full report to Council at an upcoming meeting before going “live” in the coming months
- ▶ **Care Solace**
  - ▶ Staff is researching a concierge call center program that serves as a connector to proprietary network of 425k mental healthcare providers in all 50 states
- ▶ **Monrovia Community Garden South**
  - ▶ Food ED received \$30k in grant funding to install a Community Garden behind the MODA Apartments
- ▶ **Community Services Programming**
  - ▶ Working with CS staff to develop expanded programs at Station Square Park with a vision to “populate the park” similar to Library Park



Thank you!

The background features abstract, overlapping geometric shapes in various shades of blue, ranging from light sky blue to deep navy blue. These shapes are primarily located on the right side of the frame, creating a modern, layered effect against the white background.