



“Pathway Home” Interim Housing Solution City Council Study Session

Dylan Feik, City Manager

May 7, 2024



Agenda – Overview of “Pathway Home”

- Why?
- Locations
- Interim Housing Solution to Address Homelessness
- Roles & Responsibilities of Partners
- How the Program Works
- Resources & Links

What is Pathway Home?

Pathway Home Data Dashboard

Following the completion of a Pathway Home encampment resolution, data will be collected, reconciled, and posted online. Please allow 72 – 96 hours for updates to occur. Data on Individuals Permanently Housed is updated quarterly.

Pathway Home formally launched on August 9, 2023.

The below data are current as of April 4, 2024.

This Pathway Home dashboard excludes data from our encampment resolution partnership with the City of Los Angeles.



Total Encampment
Resolutions

14



Individuals Moved into
Interim Housing

562



Recreational Vehicles
(RVs) Removed

302



Individuals
Permanently Housed

95

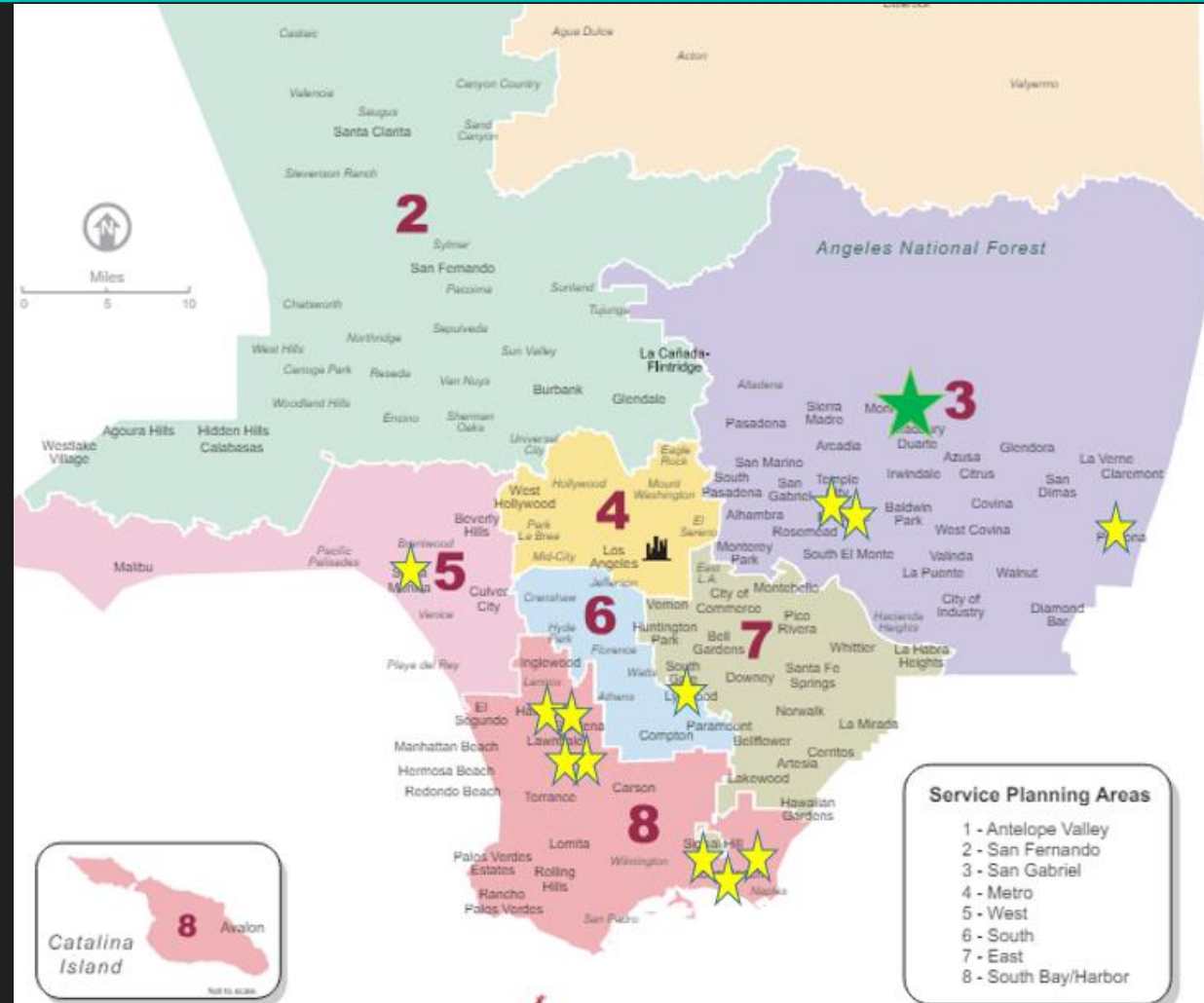
Why is the County doing this?

- After declaring a **state of emergency on homelessness** in January 2023, the LA County Board of Supervisors authorized efforts to streamline hiring, contracting, purchasing, grants, and real estate processes to address homelessness. The message was clear - “all hands on deck”
- Los Angeles County has been expanding efforts to **resolve homeless encampments**
- They are mobilizing and coordinating all efforts to **scale up and fast-track** the provision of **outreach, interim housing, permanent housing, and supportive services** to reduce unsheltered homelessness – with funding from **Measure H**

Locations

14 operations at 12 hotel sites

1. Unincorporated Lennox/Inglewood/Hawthorne (Hawthorne-1)
2. Unincorporated West Rancho Dominguez (Lynwood-1)
3. Hawthorne (Hawthorne-1)
4. Unincorporated East Gardena (Los Angeles)
5. Pomona (Pomona-1)
6. Lynwood (Lynwood-2)
7. Hilary Evacuees (El Monte-1 & 2)
8. Unincorporated Walnut/Firestone (Lynwood-3)
9. Compton (Long Beach-1)
10. Long Beach (Long Beach-2)
11. Hawthorne #2 (Hawthorne-1)
12. Santa Monica (Santa Monica)
13. Unincorporated West Rancho Dominguez/Victoria (Lynwood-1)
14. Signal Hill/Long Beach (Long Beach-3)



Does the City agree?

- City of Monrovia regularly responds to calls about illegal encampments
 - LA County Property: Sawpit Wash, Santa Anita Wash, Flood Control Properties
 - City Parks: Library, Recreation and Station Square
 - Old Town: Parking garages, sidewalks, private properties
- Pathway Home partner agencies are reporting reductions in calls for service (Police, Fire and Public Works)
- Cities and counties are exempt from each other's building and zoning ordinances under Government Code Sections 53090 and 53091. This was confirmed in *Lawler v. City of Redding*, (1992) 7 Cal.App. 4th 778
- The City's Plan to Prevent & Combat Homelessness centers around prevention of homelessness. We have not supported temporary shelters without wrap around services

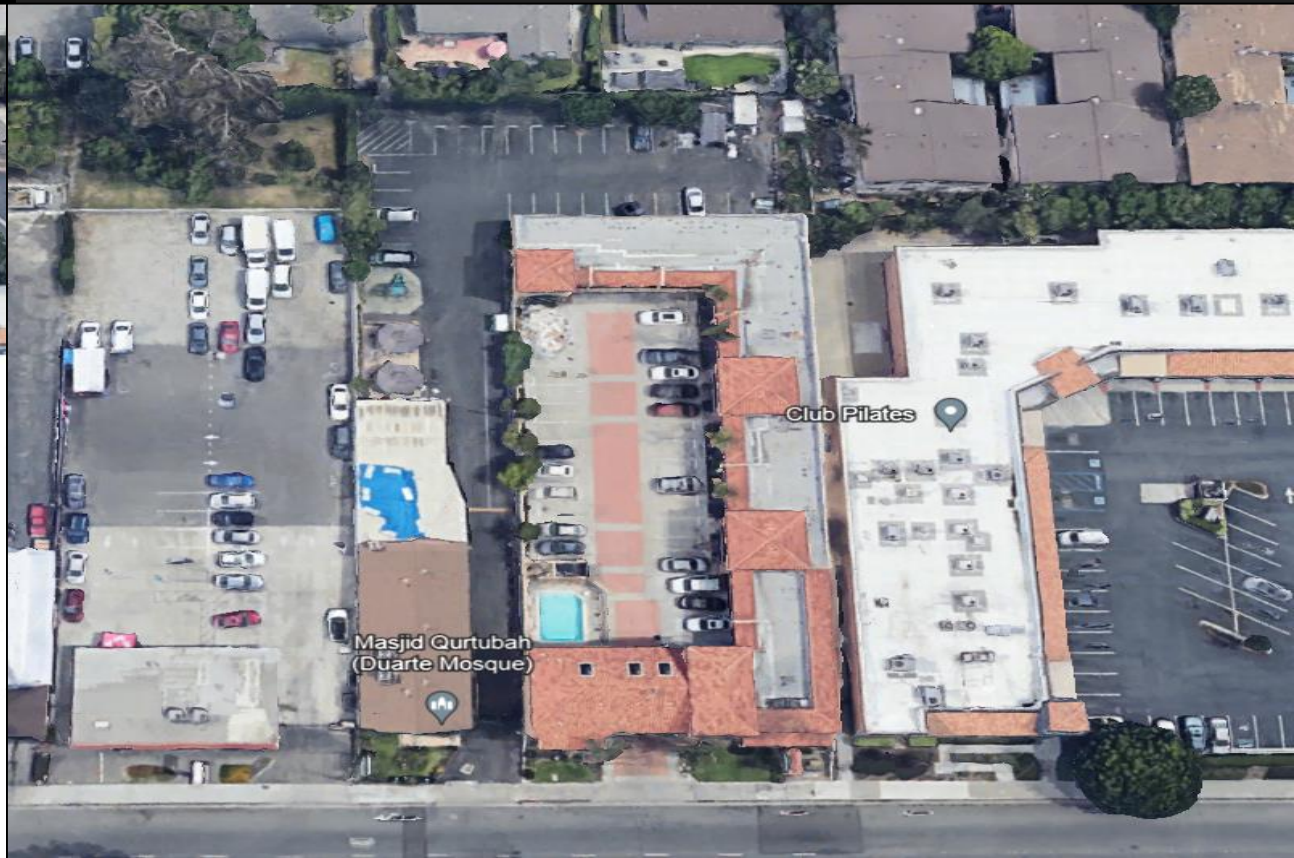
How does Pathway Home work?

- Pathway Home begins with **outreach** teams developing trusting relationships with people at an encampment, helping them get treatment for immediate medical needs, and offering them a more diverse array of immediate options for interim housing, including at **partner hotels** and other forms of shelter that align with their needs and preferences.
- After they've been transported to **interim housing**, participants will receive a room, three meals a day and **supportive services**, such as on-site case management and connections to physical and mental healthcare, substance use disorder treatment, benefits enrollment, life skills development, and more.
- To facilitate their transition to **permanent housing**, the County will connect them with housing navigation to help them throughout the lease-up process, and time-limited subsidies for individuals who require them.

How does Pathway Home work (cont.)?

- Los Angeles County mobilizes all partners needed to successfully implement a solution
 - Hotel owner/operator
 - Onsite Management Partners (Volunteers of America)
 - County resources (Department of Mental Health for clinical, case management)
 - Wrap-around Service Providers (courts, workforce development, mental health, veterinarian, etc)
- LA County contracts with a hotel owner/operator for 2 years in a lease agreement
- 100% of hotel rooms are leased for “interim housing” for persons experiencing homelessness
- The City bears none of the operational costs. In fact, the County still pays Transient Occupancy Tax (TOT) as required

Location: 1125 E. Huntington



What are the design requirements of the hotel?

- Located near the *Monrovia/Duarte* border to best serve both communities
- Enclosed on all sides (with a secure gate to restrict access)
- Hotel owner/operator must maintain to the same standard as a hotel (cleaning, security, etc)
- Limit potential zoning conflicts (further away from residential areas)

Who does this program benefit?

- Referral-based, interim housing solution only -
 - No walk-ins
 - No out-of-area relocations (will serve Monrovia, Duarte, Arcadia, Sierra Madre and surrounding unincorporated areas)
 - Cities of Monrovia and Duarte have been asked to provide referrals
 - Target the most difficult encampments and the people living in them
- For those who receive a room -
 - No guests on site
 - Animals welcome
 - Residents may come and go from the facility
 - Residents sign a 90-day agreement while they transition to permanent housing. This time is often extended because individual needs/circumstances frequently warrant additional time

Who does what?

Partner	Role/Responsibility
Hotel Owner/Operator	Resides onsite, property management
Onsite Management Company (Volunteers of America)	Organize all resources, 24/7 security, case management, logistics, neighbor complaints
County Resources	Several departments are organized to provide wellness programs for individuals based upon individual needs.
City – Public Works	When encampment is cleared, assist with debris removal
City – Police	Respond to calls for service at hotel site
City – Fire	Respond to calls for service at hotel site

What Pathway Home is NOT?

- Not permanent
 - Agreement w/ hotel will last for 2 years (possible extension?)
 - Residents live onsite as they progress thru process towards permanent supportive housing
- Not a means to transport homeless individuals from out of the area
- Not a final solution to end homelessness
- Not the end of homeless encampments (though we expect to see a dramatic reduction)
 - Only 35 rooms available (Monrovia's 2023 Point in Time Count: 35 people)
 - Awaiting U.S. Supreme Court Decision on *City of Grants Pass, Oregon v. Johnson*

Next Steps

- There is significant interest countywide in the Pathway Home Program
 - Lack of interim housing solutions in the San Gabriel Valley make Monrovia/Duarte solution a priority
 - County received \$51m State grant to expand the program along the I-105 corridor
- County is seeking our partnership in addressing encampment resolution and interim housing solutions
- County is ready to finalize contracts/details with partners necessary in a matter of weeks
- Public Outreach
 - Advised NOT to disclose the “opening date”
 - City will use its communications tools (CM Update, website, direct mail to nearby properties) to ensure awareness

Resources & Links

- Los Angeles County

- Pathway Home - <https://homeless.lacounty.gov/pathway-home/>

- Year One Success, Video Link - <https://homeless.lacounty.gov/emergency/year-one/>

- City of Monrovia

- Homeless Services Webpage - <https://www.cityofmonrovia.org/your-government/city-manager-s-office/homeless-services>

- Plan to Prevent & Combat Homelessness - <https://www.cityofmonrovia.org/home/showpublisheddocument/19057/636742481690730000>

Questions?



Dylan Feik

dfeik@ci.monrovia.ca.us

801-821-1734

A screenshot of the City of Monrovia website. The header includes the city logo and name 'MONROVIA CALIFORNIA' along with navigation links for Jobs, Meetings/Agendas, Pay Online, Contact Us, Subscribe, and Translate. A secondary navigation bar contains 'CITY SERVICES', 'DISCOVER MONROVIA', 'YOUR GOVERNMENT', 'DOING BUSINESS HERE', and 'HOW DO I...'. A left sidebar menu lists various city services and departments. The main content area displays a 'City Manager's Update' for April 21, 2023, with a 'Subscribe' button and a brief announcement about Monrovia's recognition as a 2022 Tree City USA.

Don't Forget to Sign up for the Weekly City Manager's Update!