

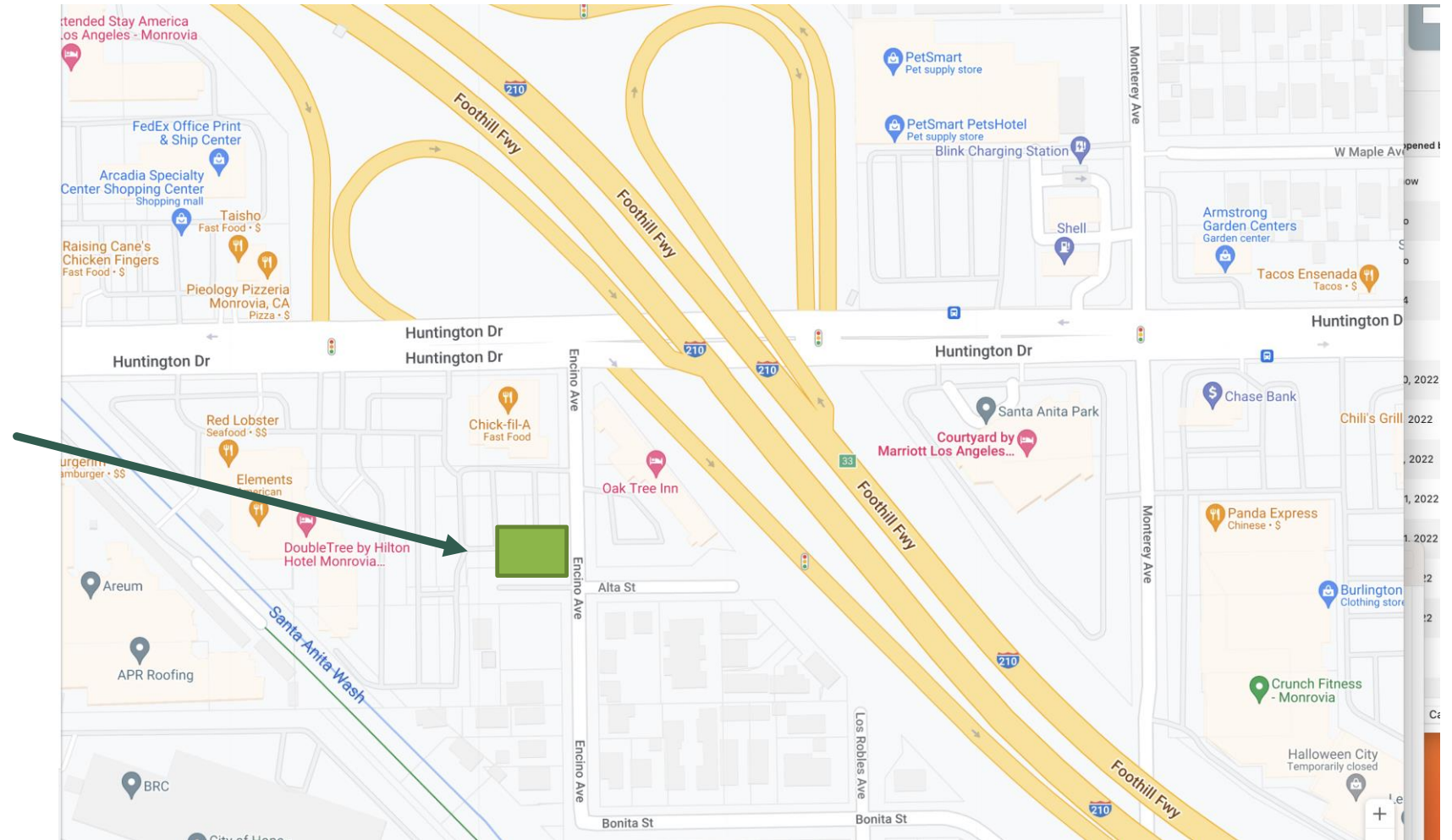


MONROVIA CITY COUNCIL STUDY SESSION SATORU TSUNEISHI PARK DEVELOPMENT

MAY 21, 2024

SATORU TSUNEISHI PARK - LOCATION

As a part of the development of the former Claim Jumper site, *The Hale Corporation* donated approximately 8,600 square feet to the City for the purpose of a new park in South Monrovia.



SATORU TSUNEISHI PARK - EXISTING SITE



SATORU TSUNEISHI PARK - EXISTING SITE



SATORU TSUNEISHI PARK - NAMING

- On January 16, 2024, the City Council unanimously named the new park at 1111 Encino Ave. as Satoru Tsuneishi Park for the following reasons.
 - First Asian American to graduate from Monrovia Arcadia Duarte High School.
 - Farmed strawberries and ran a fruit stand on Route 66 before World War II.
 - Four of the Tsuneishi boys served in the military during WWII.
 - Following the end of the war and after their internment, the Tsuneishi's returned to Monrovia and lived on Almond Avenue, next door to Louis and Lucinda Garcia.
 - Mr. Tsuneishi was also an award-winning haiku writer.
 - Mr. Tsuneishi passed in 1987 and is buried at Live Oak Cemetery along with many of his children.



SATORU TSUNEISHI PARK – FAMILY HISTORY

- On April 29, staff met with members of the Tsuneishi family to share some of the plans for the new park.
 - Expressed sincere appreciation to the City Council and the community for this honor
 - Shared stories about their Grandfather
 - The name Tsuneishi in Japanese means “solid stone” or “rock”
 - Mr. Tsuneishi use to refer to their family as the *Rock of Ages*
 - Loved Blue Star Flags on Light Poles
 - Four of his sons served in the US Army in WWII in the Pacific and Europe in the 442nd Regimental Combat Team (Go For Broke), a segregated Japanese American unit.
 - Despite the odds, the 442nd’s actions distinguished them as the most decorated unit for its size and length of service in the history of the US military.
 - E.O. 9066 Story
 - The family has provided additional photos for the project
 - The family shared images of a bronze bust made of Mr. Tsuneishi
 - The family will be reviewing the poetry of Mr. Tsuneishi for *Footnote* consideration



SATORU TSUNEISHI PARK – FAMILY HISTORY

1913 Photo - Satoru & Sho Tsuneishi



1917 First Duarte House



SATORU TSUNEISHI PARK – FAMILY HISTORY

Tsuneishi Family 1924 in Monrovia



Tsuneishi Family 1925 in Monrovia



SATORU TSUNEISHI PARK – FAMILY HISTORY

Ceramic Bust of Satoru Tsuneishi



Extensive Writings of Satoru Tsuneishi



SATORU TSUNEISHI PARK – KEY FEATURES

- Staff have been working to develop a preliminary site plan based on the input received from the community at the community meeting:
 - Playground
 - Additional Landscape and Trees – Protect all trees on site and add a minimum of 9 new trees
 - Tables and Benches
 - Bear Safe Trash Containers
 - Dog Waste Stations
 - Move wall to the south and eliminate wall to the east
 - Incorporate Public Art – Mural(s) and Footnotes
 - Incorporate a Little Library
 - Include a fence around the park
 - Create safe access to the park from Chick-fil-A
 - Include a Walking Loop
 - Include Interpretive Signs – Satoru Tsuneishi Story
 - Incorporate the themes in the design – Route 66, Japanese Monrovia, Citrus / Agriculture, Tsuneishi 4-Blue Star Family recognition

SATORU TSUNEISHI PARK – SITE PLAN

- 55% (or 4,720 SF) of the new park is Low Water / Native Landscape
- 20% (or 1,640 SF) of the new park is Turf / Decomposed Granite
- 24% (or 1,976 SF) of the new park is the Playground
- Project Budget is estimated at \$1.5M

SATORU TSUNEISHI PARK – SAFE PARK ACCESS

PROBLEM



PROBLEM



SATORU TSUNEISHI PARK – SAFE PARK ACCESS

- The recommended improvements and actions are as follows:
 - Add stop signs for northbound and southbound traffic at the internal intersection at the northwest corner of Tsuneishi Park.
 - Install a raised crosswalk that is at the same height as the curbs on each side of the drive aisle. This would serve as a speed table for vehicles utilizing the driveway.
 - Extend the proposed sidewalk along the western edge of the property.
 - Add in a fence in the planter on the north side of the drive aisle.



SATORU TSUNEISHI PARK – PARK FURNISHINGS



Wood Grain Recycled Plastic Colors

The longevity and Eco-friendliness of recycled plastic lumber with a feel and depth reminiscent of wood. Wood grain recycled plastic is extruded with a multicolor tonal streaking and etched with a wood grain texture to achieve a realistic wood like appearance and feel.



Brazilian Walnut



Antique Mahogany

This bench can be made at 4 feet, or we can add a center armrest in the middle of a 6 foot bench.

SATORU TSUNEISHI PARK – PARK FURNISHINGS



ACCESSIBLE DRINKING FOUNTAIN



BIKE FIX IT STATION



PET STATION



WASTE RECEPTACLE

This is another opportunity for public art. Wrapping the Big Belly much like we did in Old Town with historic images or public art.

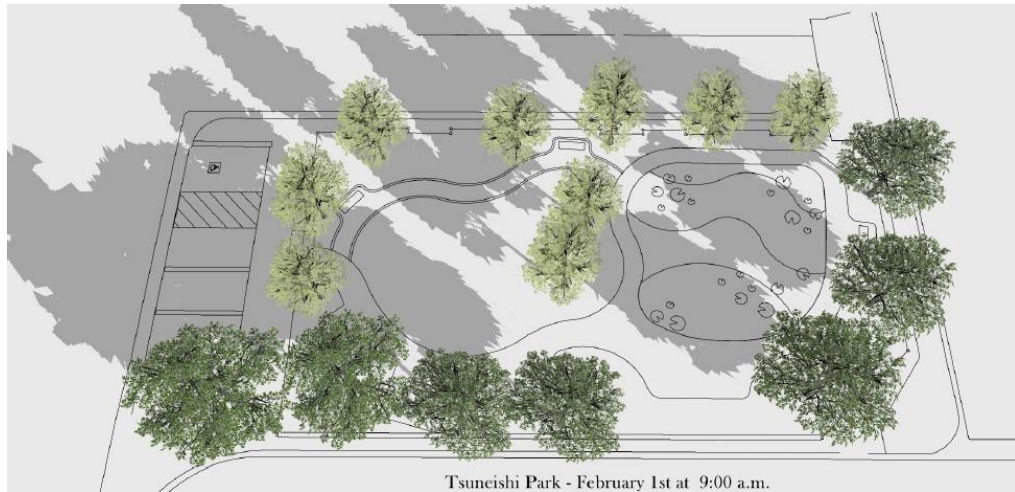
SATORU TSUNEISHI PARK – PUBLIC ART

- Mural opportunity – two possible locations
- Footnotes – concrete stamped poetry
- Big Belly – Wrap the Trash containers

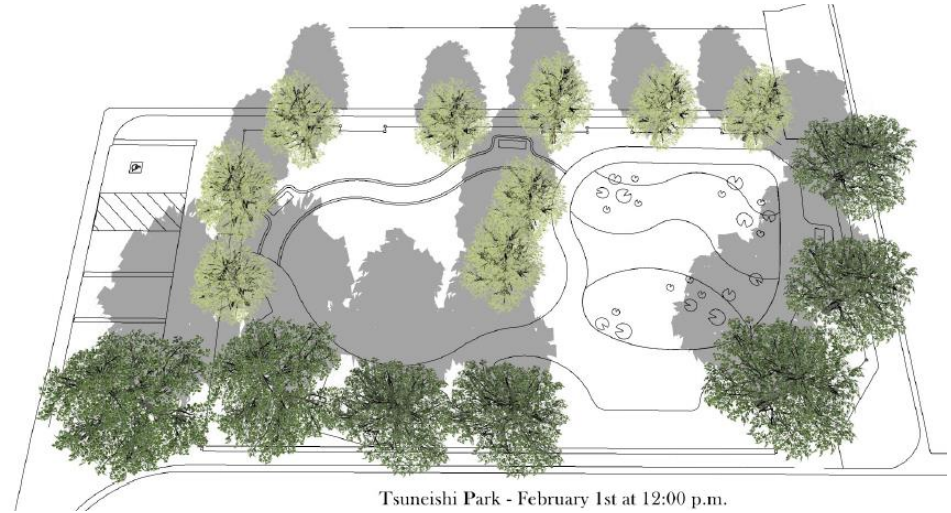


SATORU TSUNEISHI PARK – SHADE STUDY

FEBRUARY



Tsuneishi Park - February 1st at 9:00 a.m.



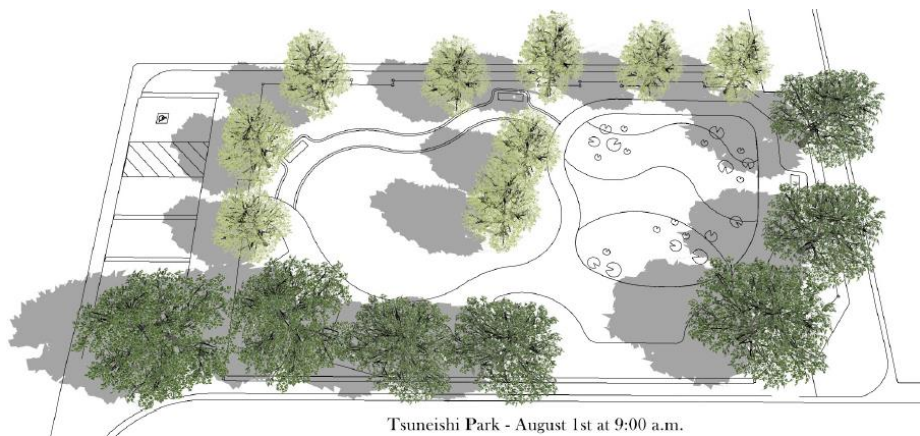
Tsuneishi Park - February 1st at 12:00 p.m.



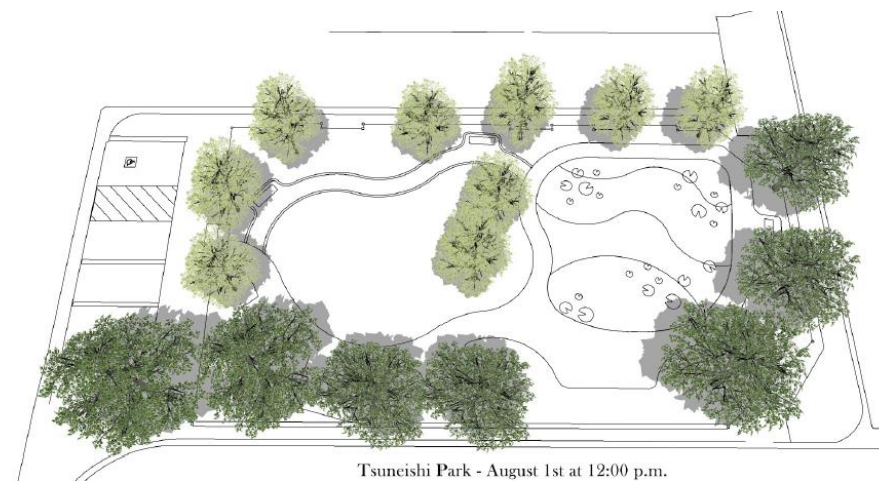
Tsuneishi Park - February 1st at 4:00 p.m.

SATORU TSUNEISHI PARK – SHADE STUDY

AUGUST



Tsuneishi Park - August 1st at 9:00 a.m.



Tsuneishi Park - August 1st at 12:00 p.m.



Tsuneishi Park - August 1st at 4:00 p.m.

SATORU TSUNEISHI PARK – TREE RECOMMENDATIONS

- While we will incorporate shade into the playground design, the hope is to create additional shade into the park by planting additional trees

3 California Sycamores –
Native, fast growing, and
blend with the surrounding
landscape



3 Western Redbuds –
Native, evoke Japanese
Cherry Blossoms



3 Engelmann Oaks –
Native and endangered



SATORU TSUNEISHI PARK – ASIAN INSPIRED LANDSCAPE FEATURES



Incorporate some Japanese inspired landscape features such as a Torii Gate or rakes sand (in concrete) along with stone boulders.

SATORU TSUNEISHI PARK – PLAYGROUND DEVELOPMENT

- Met with the Community Service Commission subcommittee to develop the playground design
 - Wanted this playground to be different than the others we have recently renovated
 - Originally we were looking for something to celebrate the history
 - Agricultural focus
 - Wigwam design
 - Route 66
- Met with the Playground manufacturer to look at options that may fit our needs
 - The design that seemed to be the best fit was the Forma playground.
 - Unique look
 - Strong architectural design
 - Clear sight lines
 - Many teachings in Japan that center around balance, harmony, and equality
 - Playground focus is on balance as well as climbing
 - Aesthetic is sophisticated yet inviting for youth
 - Monrovia Green!

SATORU TSUNEISHI PARK - FORMA DESIGN



SATORU TSUNEISHI PARK - FORMA DESIGN



landscape
structures

Tsuneishi Park

1184906-01-03-03 • 05.03.2024

RecWest
OUTDOOR PRODUCTS INC.

©2024 Landscape Structures. All Rights Reserved.

SATORU TSUNEISHI PARK - FORMA DESIGN



Tsuneishi Park

1184906-01-03-04 • 05.03.2024



©2024 Landscape Structures. All Rights Reserved.

SATORU TSUNEISHI PARK – PLAY BENEFITS

- Forma is about challenging children to build their motor coordination and balance as they play.
- Builds cognitive skills and promotes problem solving.
- Climbers options includes solid ladder to belting and cable climbing. These improve balance, flexibility, and motor coordination.
- On the slack line they will develop agility as they move from one end to the other.
- Traversing the wobbly steps will help them build core muscle strength as they problem solve their way from one step to the other.
- The Spinner provides different ways that children can spin and rotate their body alone or with a friend.
- The Fox Den Hangouts allow children a unique place to take a breather on the playground. The design allows the individual to snuggle into the hangouts and gently rock. It creates a fun “time-in” place to calm themselves so that they can head back out to play. They are set at a height for easy transfer from a wheelchair so that all can swing together.
- Sensory panels help to enhance cognitive, tactile, and motor skill through self-led exploration.

SATORU TSUNEISHI PARK – PLAYGROUND SHADE



TSUNEISHI PARK DEVELOPMENT

Next Steps:

- Gather feedback from the City Council and incorporated that into the design = June 2024 Completion
- Finalize concepts and move into engineering – 2 months to finalize construction documents = September 2024 Completion
- Estimate Bid in October 2024
- Construction to begin in December 2024
- Completion in April 2025



SITE IMPROVEMENTS

- | | | | | | | | |
|-------------------------|-----------------------|----------------------|-----------------------|-------------------------------------|---|---------------------------------|--|
| 1 PLAYGROUND 1,976 SF | 4 INTERPRETIVE GARDEN | 7 LITTLE LIBRARY | 10 BENCH (5) | 13 TUBULAR STEEL FENCING | 16 PATHWAY LIGHTING WITH RANMER POLFS (8) | 20 CANYON PARK BOULDERS | 24 CONCRETE WALK WITH POETRY WORD STAMPS |
| 2 PICNIC TABLE (3) | 5 DG PATHWAY 310 SF | 8 DRINKING FOUNTAIN | 11 TURF AREA 1,330 SF | 14 JAPANESE TORII GATE | 17 WASTE RECEPTACLE | 21 EXISTING TREE | 25 CHICK FIL-A INSPIRED FOOTPRINTS LEADING TO PARK |
| 3 CHILDREN AT PLAY SIGN | 6 NEW TREES | 9 PARK MONUMENT SIGN | 12 PET STATION (2) | 15 DIKE RACK AND FIX IT STATION (1) | 18 INTERPRETIVE SIGNS (3) | 22 ART MURAL ON TRASH ENCLOSURE | 26 BLOCK WALL WITH ART MURAL ON PARK SIDE |

- LEGEND**
- TURF 1,330 SF
 - LOW WATER USE LANDSCAPE 4,517 SF
 - DECOMPOSED GRANITE PATHWAY 310 SF



Tsuneishi Park

May 20, 2024

FRJ-21133

QUESTION / DISCUSSION

