

A  Sempra Energy utility

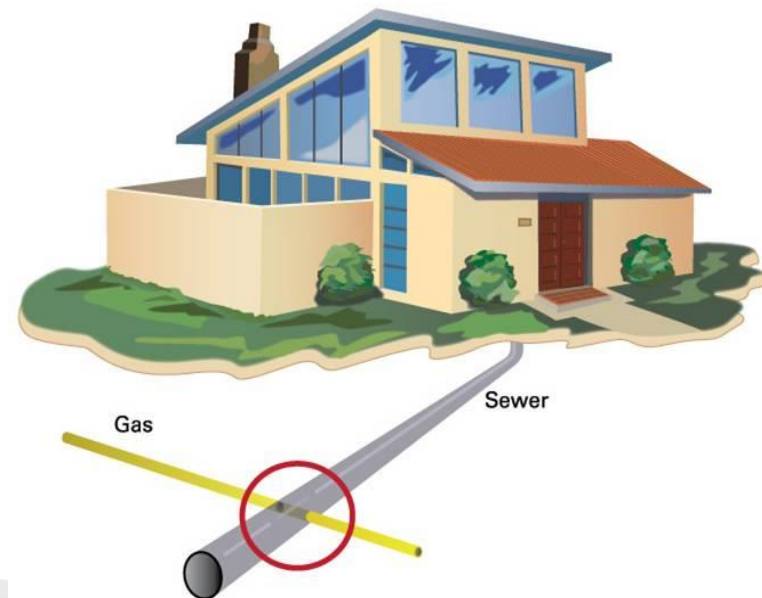
# **SOCALGAS**

## **SEWER LATERAL INSPECTION PROGRAM (SLIP)**

Monrovia  
September 3, 2024

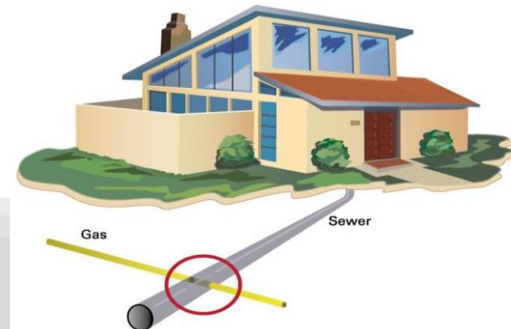
# ABOUT THE PROGRAM

- » Inspection of sewer lines for intrusions
- » Pilot project started in June 2010
- » Implementation of Project in 2011
- » Project Team owns a fleet of Lateral and Push trucks, and employs three contractors in the Gas Company territory
- » Gas Company management employees supervise contractors



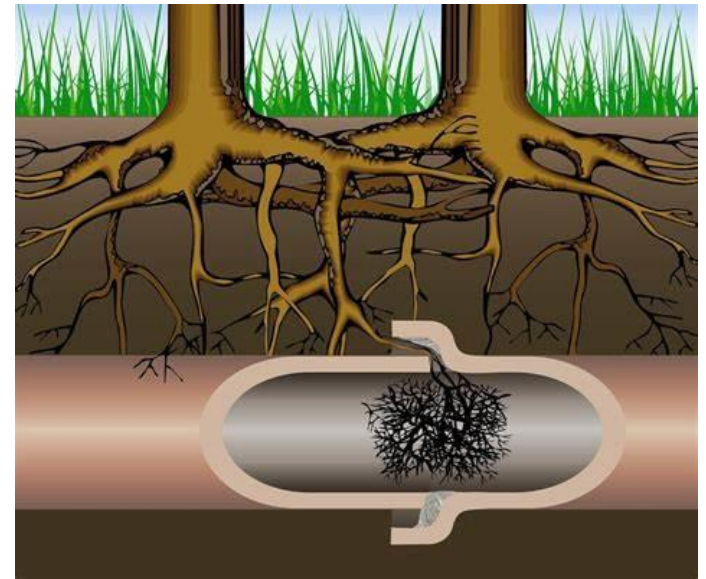
# SEWER LATERAL INSPECTION PROGRAM (SLIP)

- » Project Manager coordinates with city inspectors to inform the city of inspection areas
- » Project informs city Inspectors of any intrusions found, including those of other utilities, and any irregularities we see in the city's mainlines (misalignment, debris, damages, etc.)
- » The project will obtain a permit to conduct any repairs caused by the installation of Gas Company facilities. Licensed contractors perform these repairs at no expense to the city (mainline) or customers (laterals)
- » Inspections are conducted on homeowners' laterals at no expense, and customers are notified of any irregularities that may be found.
- » 944 Intrusions found as of 7/12/2024.



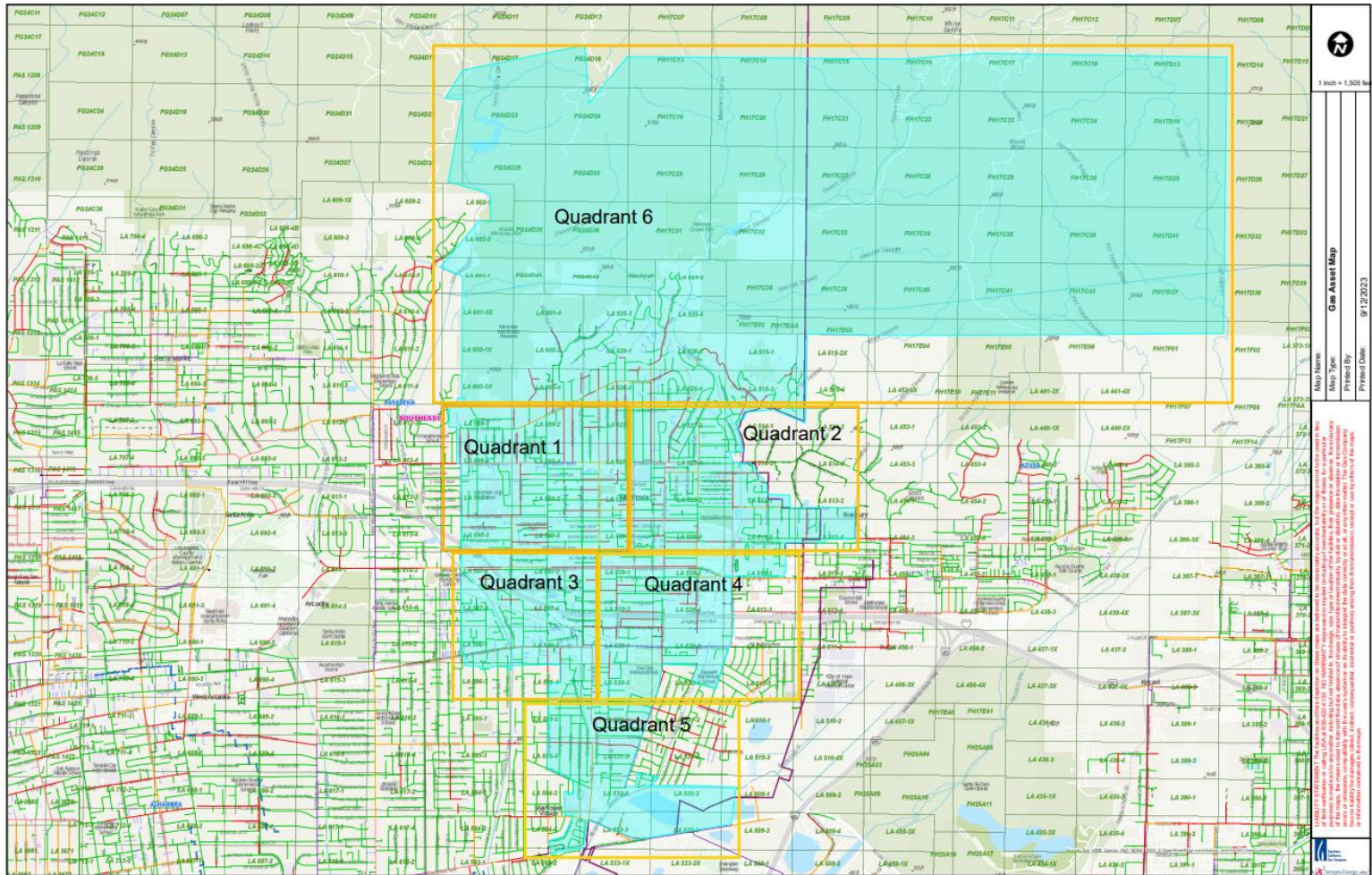
# What if it's clogged?

- » Clean out (\$5-\$6k)
- » Hydro jetting (\$750)
- » Video available for customers with intrusions
- » SoCalGas covers the cost





# Zone Order



# COMMUNITY INTERACTIONS

- » Mailers will be sent out in advance
- » Designated inspector available to the public
- » Staff will have brochures available
- » Door hangers will be left behind as needed
- » All approved employees and contractors will have SCG vest, vehicles, and identification
- » City Manager Update will include info throughout the duration of the project



**SEWER LATERAL SAFETY**

IF YOU NEED TO CLEAR AN EXTERIOR SEWER LINE LOCATED OUTSIDE OF THE STRUCTURE, BE AWARE THAT THE BLOCKAGE MAY BE NEAR OR CAUSED BY A NATURAL GAS PIPELINE THAT HAS PENETRATED THE SEWER LINE. THERE IS A RARE CHANCE THAT A NATURAL GAS PIPELINE MAY HAVE PENETRATED THE SEWER LINE WHEN IT WAS INSTALLED USING TRENCHLESS CONSTRUCTION METHODS. IF THIS OCCURRED, AN AUGER "SNAKE" COULD CAUSE DAMAGE TO THE GAS LINE WHEN CLEARING THE SEWER LINE, WHICH MAY RESULT IN A GAS LEAK.

If an exterior sewer line blockage may be near or caused by a natural gas pipeline that has penetrated the sewer line, please call Southern California Gas Company (SoCalGas®) at +800-427-2200 before you attempt to clear the line. We will respond by phone and tell you if it is safe to clear, or visit the site at no charge to verify.

**Important Safety Steps**

When clearing a blockage in any exterior sewer line, remember to follow these important safety steps:

- Always use a cleanout outside of the structure to auger the sewer line, if one is available. Using an exterior cleanout will lessen the chance of natural gas entering into the structure in the unlikely event that a gas line is damaged while clearing the blockage.
- Exercise caution when using a power-driven device to clear the blockage. Any spark-producing device may cause ignition of natural gas.

**Important Information Regarding Sewer Lateral Safety**

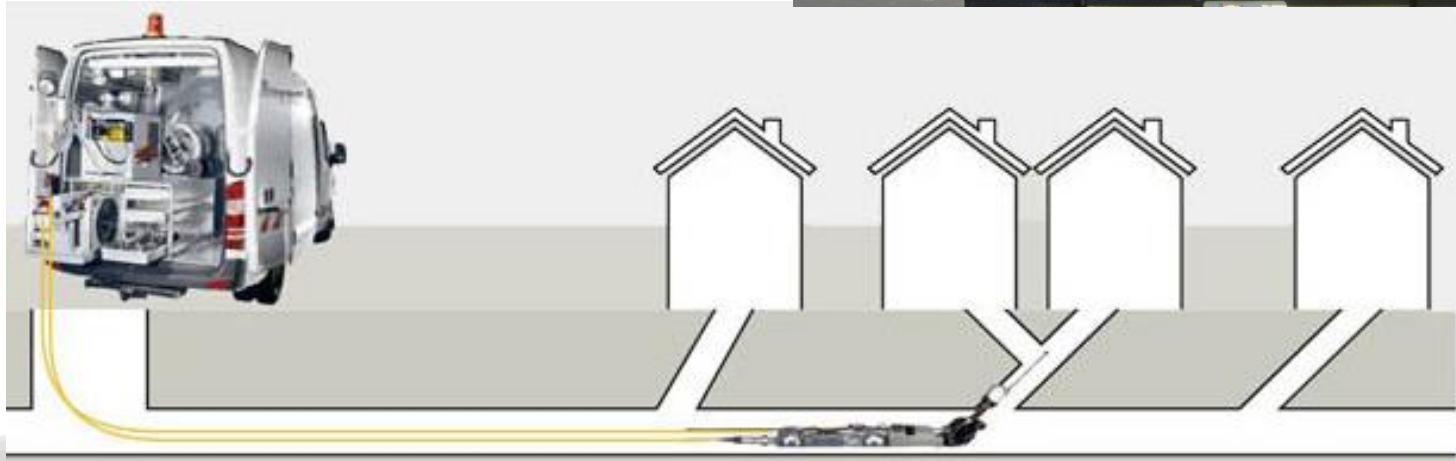
**IMPORTANT WARNING:** Natural gas can be present when clearing outside of the structure.

socialgas  
Visit us online

SoCalGas



# LATERAL LAUNCH VEHICLES

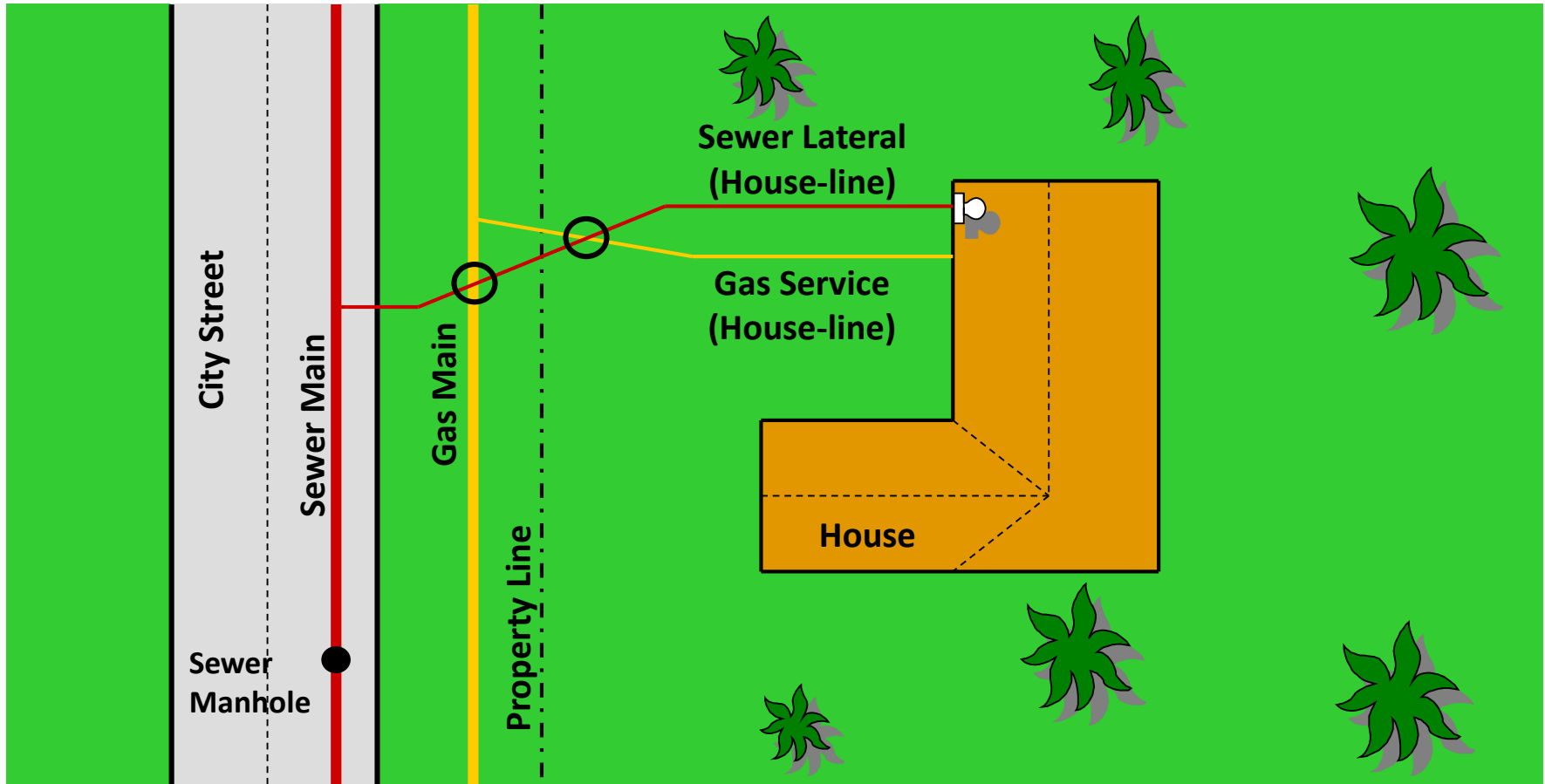


# PUSH VEHICLES





# POTENTIAL INTRUSION POINTS



○ = Potential Intersection

# INTRUSIONS



# Contact Information

Alex Venegas – SLIP Project Manager, [AVenegas@socalgas.com](mailto:AVenegas@socalgas.com)

Gary Chao – Inspector, [GChao@socalgas.com](mailto:GChao@socalgas.com)

Jessica Alvarenga – Public Affairs Manager, [JAlvar12@socalgas.com](mailto:JAlvar12@socalgas.com)



**THANK YOU**



Southern  
California  
Gas Company



A Sempra Energy utility®