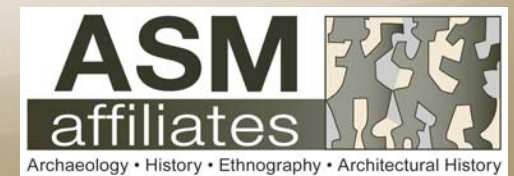


Monrovia Historic Context Statement

*Informational Meeting
August 24, 2017, 5:30pm*



Who We Are: ASM Affiliates

- Historic Preservation Specialists
- Qualified under *Secretary of Interior's Professional Qualification Standards* for
 - Architectural Historian
 - Historians
- 3000+ projects in southern CA



Key Personnel



Shannon Davis, Project Manager

- 19 years experience (8 with NRHP, 7 with ASM)
- M.A. Historic Preservation, George Washington University
- B.A. American History, University of Southern California
- SOI Qualified as Architectural Historian and Historian
- CA Register of Professional Historians



Marilyn Novell, Architectural Historian

- 9 years experience (2 with ASM)
- M.S. History of Architecture/Urbanism, UC Berkeley
- B.A. American Studies, UC Berkeley
- SOI Qualified as Architectural Historian and Historian

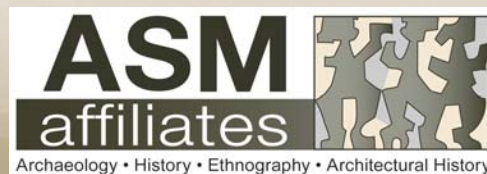


Laura Voisin George, Architectural Historian

- 5 years experience (2 with ASM)
- M.A. Architectural History University of Virginia
- B.A. Planning and Development, University of Southern California
- SOI Qualified as Architectural Historian

Why are you here tonight?

- Member of Monrovia Historic Preservation Group
- Member of Monrovia Historical Society
- Member of Monrovia Historical Museum
- Member of Historic Preservation Commission
- General interest in history and historic places
- Member of Planning Commission
- Member of Chamber of Commerce
- Realtor
- Homeowner of property built prior to 1970
- Representative of a property company or HOA
- Academic professional
- Planning professional
- City employee/Library employee



What is Historic Preservation?

“the process of identifying, protecting, and enhancing buildings, places, and objects of historical and cultural significance”

–National Trust for Historic Preservation

- ◎ ***National Register of Historic Places***
- ◎ ***California Register of Historical Resources***
- ◎ ***Monrovia Historic Landmark***

National Register of Historic Places/ California Register of Historical Resources

A. EVENTS

Associated with events that have made a significant contribution to the broad patterns of our history

B. PEOPLE

Associated with the lives of persons significant in our past

C. ARCHITECTURE

- Embody distinctive characteristics of a type, period, or method of construction; or
- Represent the work of a master; or
- Possess high artistic values; or
- Represent a significant and distinguishable entity whose components may lack individual distinction

D. ARCHAEOLOGY

that have yielded, or may be likely to yield, information important in prehistory or history



Monrovia Historic Landmark

1. It is identified with **persons** or **events** significant in local, regional, state or national history.
2. It is representative of the work of a notable **builder, designer, or architect**.
3. It contributes to the significance of a historic area, being a **geographically definable area** possessing a concentration of not less than 50% of historic or architecturally related grouping of properties which contribute to each other and are unified aesthetically by physical layout or development.
4. It embodies one or more **distinctive characteristics of style, type, period, design, materials, detail, or craftsmanship**.
5. It has a **unique location** or **physical characteristics** or represents an established and familiar **visual feature** of a neighborhood, community, or the city.
6. It incorporates **elements that help preserve and protect** a historic place or area of historic interest in the city.
7. It has yielded, or may be likely to **yield information** important in prehistory or history.

Factors in Eligibility

Integrity:

- Location
- Design
- Setting
- Materials
- Workmanship
- Feeling
- Association

50 year rule or Exceptionally Significant

What is a Historic District?

“A district possesses a significant concentration, linkage, or continuity of sites, buildings, structures, or objects united historical or aesthetically by plan or physical development.”
-National Register of Historic Places

“Any area containing a concentration of improvements which have a special character, historical interest, or aesthetic value, which possess integrity of location, design, setting, materials, workmanship, feeling, and association, or which represent one or more architectural periods or styles typical to the history of the city”
-Monrovia Municipal Code



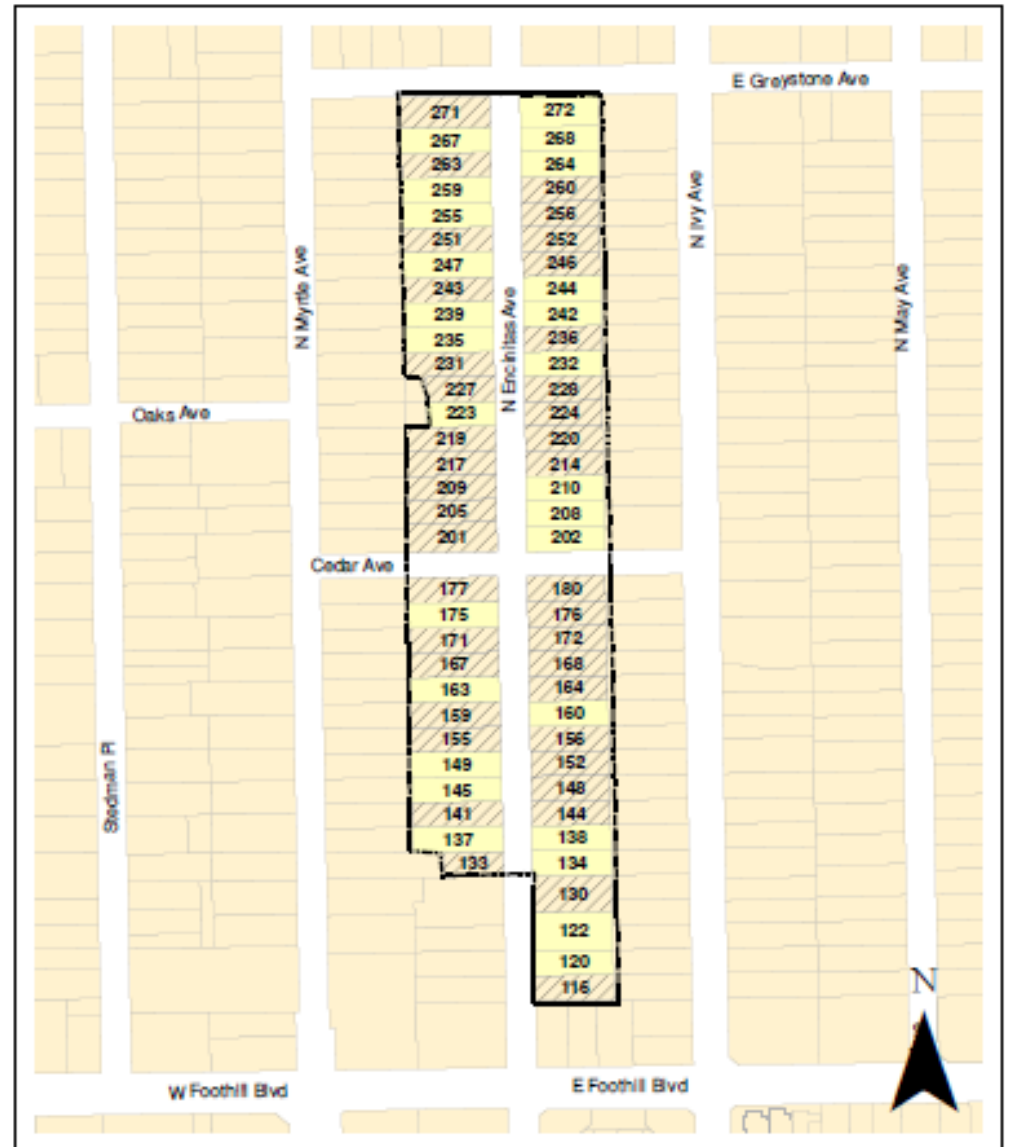
What is a Historic District?

Wild Rose Tract Historic District



What is a Historic District?

North Encinitas Historic District



What is a Historic Context?

- Identify the broad patterns of historical development
- Link the history of an area with the built environment
- Foundation for making decisions about identification, evaluation, and treatment of historic properties.
- Focus is on *existing properties*
- Not intended to be a comprehensive history

Historic Context Projects

- Chula Vista Citywide
- Ontario Aviation
- Survey LA/Military
- Reno/UNR
Neighborhoods
- Grantville/San Diego
- Downtown Vista

Approach and Methodology

PHASE ONE: RESEARCH

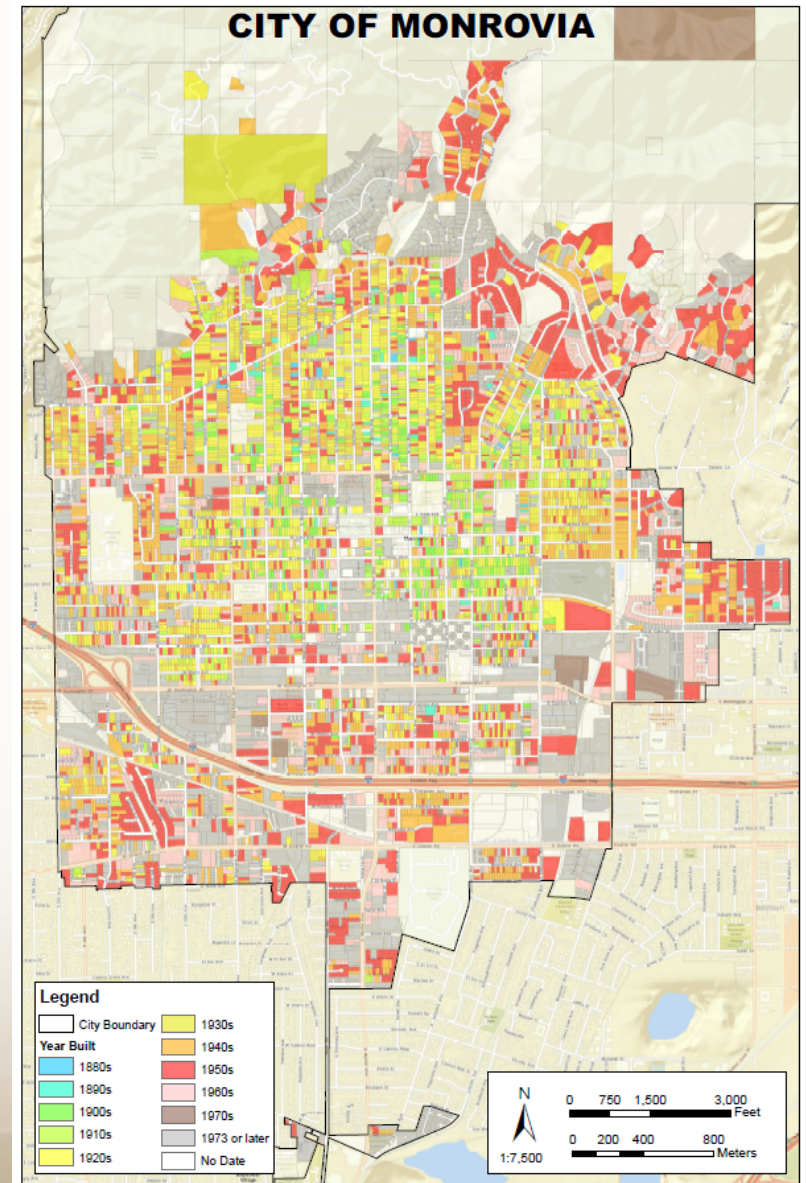
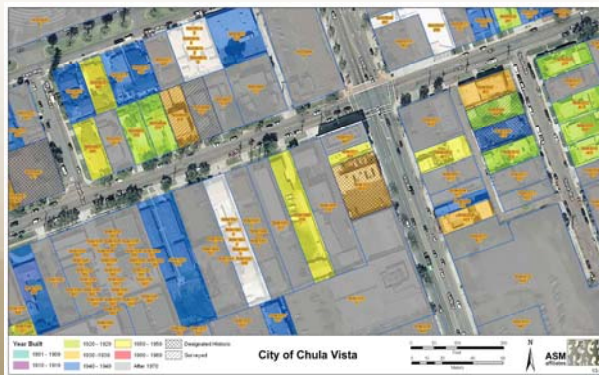
- Review existing contexts/reports
- Conduct research at local archives:
 - Monrovia Public Library
 - Monrovia Historical Museum
 - Utilize maps, photos, newspapers
- Public input



Approach and Methodology

PHASE TWO: RECONNAISSANCE SURVEY

- Pre-field preparation:
 - Assessor's data
 - GIS field maps
 - Historic aerials
- Two-day survey by Architectural Historians
- Identify:
 - development patterns
 - general characteristics of neighborhoods
 - property types
 - architectural styles
 - distribution of resources
 - potential historic district boundaries



Approach and Methodology

PHASE THREE: CONTEXT DEVELOPMENT

- 1880s through 1960s
- Synthesis of historians' and architectural historians' research and survey findings
- Include diverse residential, commercial, and industrial neighborhoods
- Significant themes/sub-themes
- Property types
 - registration requirements
 - character-defining features
 - integrity thresholds
 - NRHP, CRHR, and Monrovia criteria
- Recommend potential historic districts
- Follow CA OHP's *Writing Historic Contexts and Format for Historic Context Statements*

