

## 1.0 INTRODUCTION

### 1.1 PROJECT OVERVIEW

#### 1.1.1 Project Purpose

During the 1980s and 1990s, dedicated community members led conservation efforts that culminated with a citywide special election on July 11, 2000. The passage of Measures A and B established the mechanisms to ensure the preservation of the undeveloped hillsides (Project Area) within the City of Monrovia's (City) jurisdiction.

The purpose of this Resource Management Plan (RMP), as established by this grassroots community endeavor, is to: 1) document current natural and man made conditions within the Project Area; 2) evaluate challenges and opportunities offered by the Project Area; and 3) provide a management plan that will guide stewardship of the Project Area, protect important natural resources, and where appropriate, recommend passive recreation opportunities. The RMP follows a framework of core values and goals established by the community and approved by the Community Services Commission in 2005:

- Natural Resources - Environmental and Viewshed Preservation
- Outdoor and Nature Education
- Fire Safety
- Passive Recreation

In 2006, the City initiated the process of preparing this Resource Management Plan, to manage, protect, and enhance the natural resource values of the Project Area while providing safe recreational and educational opportunities to the public.

Using City and State grant funds, privately owned lots have been purchased every year since 2002. Over 100 houses and associated streets and utilities were not constructed in the hillsides based on the purchase of these properties. A condition for acceptance of the State grants requires the City to preserve and protect all natural resources in perpetuity and to provide for walking, hiking and bird watching opportunities. This commitment for managed public access is fundamental to the RMP.

A history of the establishment of the Project Area is summarized in Table A. For a detailed discussion of the regulatory framework that guides the development of management strategies for the Project Area, refer to Section 2.0 – Policies and Ordinances.

**Table A: Hillside Wilderness Preserve and Hillside Recreation Area Establishment Process**

Early 1900s	– Public use of the foothills of the San Gabriel Mountains now contained within the Project Area boundaries originated with the development of Deer Park
1913	– The City dedicated, and has since maintained, Canyon Park as a protected wilderness preserve and passive recreation area for residents throughout Los Angeles County
Early 1980s	– Planning for sensitive hillside development was initiated
1990	– Formation of Hillside Advisory Committee – Committee advised consultants on the development of land use plan for housing in the undeveloped hillsides
1993	– Evaluation of environmental data provided by consultants
1997	– Reassessment of environmental data provided by consultants – Consultation with several technical advisors (Dr. Ann Croissant, San Gabriel Mountains Conservancy; Mr. Terry Ellis, U.S. Forest Service; and Mr. Michael Long, Eaton Canyon Nature Center)
1999	– Hillside Development Plan brought before the Planning Commission – public hearings; “Plan B” passes
January 2000	– City Council holds a series of public hearings – City Council votes to put Measures A and B on a Special Election ballot
March 16, 2000	– Land Plan “C Modified” (described in the Madison Specific Plan, revised April 23, 1999) and approved by the City Council. Land Plan “C Modified” Plan covered the properties contained in the original Cloverleaf Canyon Specific Plan and those added by subsequent amendment to the specific plan area. (LFW Properties, Revised Feb. 19, 1997; Rev. April 23, 1999; Rev. 2000) City Council unanimously voted to place several related hillside measures on the July 11, 2000 ballot
July 11, 2000	– A special election to: <ul style="list-style-type: none"> <li>• Approve a new “Wilderness Preserve” and “Hillside Recreation” general plan and zoning classification</li> <li>• Approve a parcel tax to acquire hillside open space</li> <li>• Ratify the City Council’s March 16, 2000 approvals of Plan “C Modified” for the Madison Specific Plan – Alternative Land Plan “C Modified”; the Cloverleaf Canyon Specific Plan amendment for the Leonard, Fors and Woodward properties as amended – Alternative Land Plan “C Modified”; amendment of the Cloverleaf Canyon Specific Plan for the Doug Wright property as amended – Alternative Land Plan “C Modified”; and, approved the amendment of the Cloverleaf Canyon Specific Plan (excluding Wright property) – Alternative Land Plan “C Modified”.</li> </ul> – Voters of Monrovia approve Measures A and B
August 2000	– Wilderness Preserve Steering Committee formed to develop an Open Space Acquisition Plan to direct and prioritize acquisition of properties
2002 - present	– 553 acres acquired in the Madison Avenue, Cloverleaf, Upper Cloverleaf and Norumbega Specific Plan areas with bond and State grant monies – Community Services Commission designated as advisory body to oversee stewardship of Project Area, protect important natural resources, and where appropriate, recommend passive recreation opportunities – Trails Committee established as an advisory body to the Community Services Commission – Community Services Commission approved the Mission, Core Values and Goals, Priorities for the Resource Management Plan
May 2006	– Hillside Wilderness Preserve and Hillside Recreation Area Management Plan initiated
August 5, 2006	– Community Meeting – Project Overview – public access discussion
Nov. 4, 2006	– Community Meeting – Public Access Alternatives Discussion
June/July, 2007	– Community Survey on Resource Management Strategies
Sept. 9 2008	– RMP presented to the Community Services Commission
Jan. 20, 2009	– Council Adoption of RMP and Certification of IS/MND

## 1.1.2 Project Area

Incorporated in 1887, the City of Monrovia (City) currently has a population of 39,327 (California Department of Finance, 2008). The City is located approximately 20 miles northeast of downtown Los Angeles, nestled against the foothills of the San Gabriel Mountains with the San Gabriel valley to the south (Figure 1). The Project Area is comprised of two areas encompassing 1,416 acres of City owned land referred to in the City of Monrovia General Plan as “Hillside Wilderness Preserve” and “Hillside Recreation Area” (Figure 2). For the purposes of this RMP, the two areas are referred to as the “Project Area” when conditions apply to the entire study area. The terms “Hillside Wilderness Preserve” and “Hillside Recreation Area” are used when conditions and/or recommendations only apply to one area. The 40-acre Leonard property and the entire Lower Clamshell Motorway from Ridgeside Drive to Cloverleaf Drive and the Lower Clamshell Truck Trail to Arcadia are also included in the Project Area.

## 1.2 DOCUMENT FORMAT

This RMP provides a comprehensive, long-term management plan for the Project Area. It is based on the voter mandate of 2000 and organized around the Mission, Core Values, and Goals established by the City (refer to Section 5.0 – Policies and Ordinances). The RMP includes resource and public recreation management objectives and implementation strategies. The main elements of the RMP are summarized below.

**Section 1.0** provides an overview of the Project Area and the RMP, including the purpose of the RMP and the description of the Hillside Wilderness Preserve and Hillside Recreation Area. It also includes a description of the planning process for obtaining community input.

**Section 2.0** outlines the regulatory framework that guides development of management strategies for the Project Area, including the City General Plan, Specific Plans, Ordinances, and requirements of the grant funds used to acquire Hillside Wilderness Preserve lands.

**Section 3.0** provides a description of the Project Area, including geographical setting, land use, visual resources, topography, geology and soil, hydrology, fire history, recreation use and existing facilities, and public outreach programs.

**Section 4.0** includes a discussion of key issues, threats, and potential impacts that clarify the needed focus for the RMP. Key management challenges include habitat fragmentation, invasive plant species, fuels and fire hazard conditions, the urban edge effect, public use and erosion.

**Section 5.0** provides overall management goals and objectives for the Project Area. The goals and strategies outline a management framework to protect the resources and to provide for passive recreation opportunities to the public.

**Section 6.0** outlines the management strategies and implementation tools to protect and preserve the resource values of the Project Area, including natural, cultural and visual resources. One of the primary objectives of the RMP is to enhance wildlife habitats and develop conservation vegetation management practices that preserve sensitive and endangered plant species.



LSA

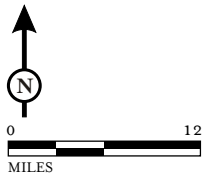


FIGURE 1

*City of Monrovia  
Hillside Wilderness Preserve  
and Hillside Recreation Area*

Regional Location

SOURCE: ©2006 DeLORME. STREET ATLAS USA©2006.



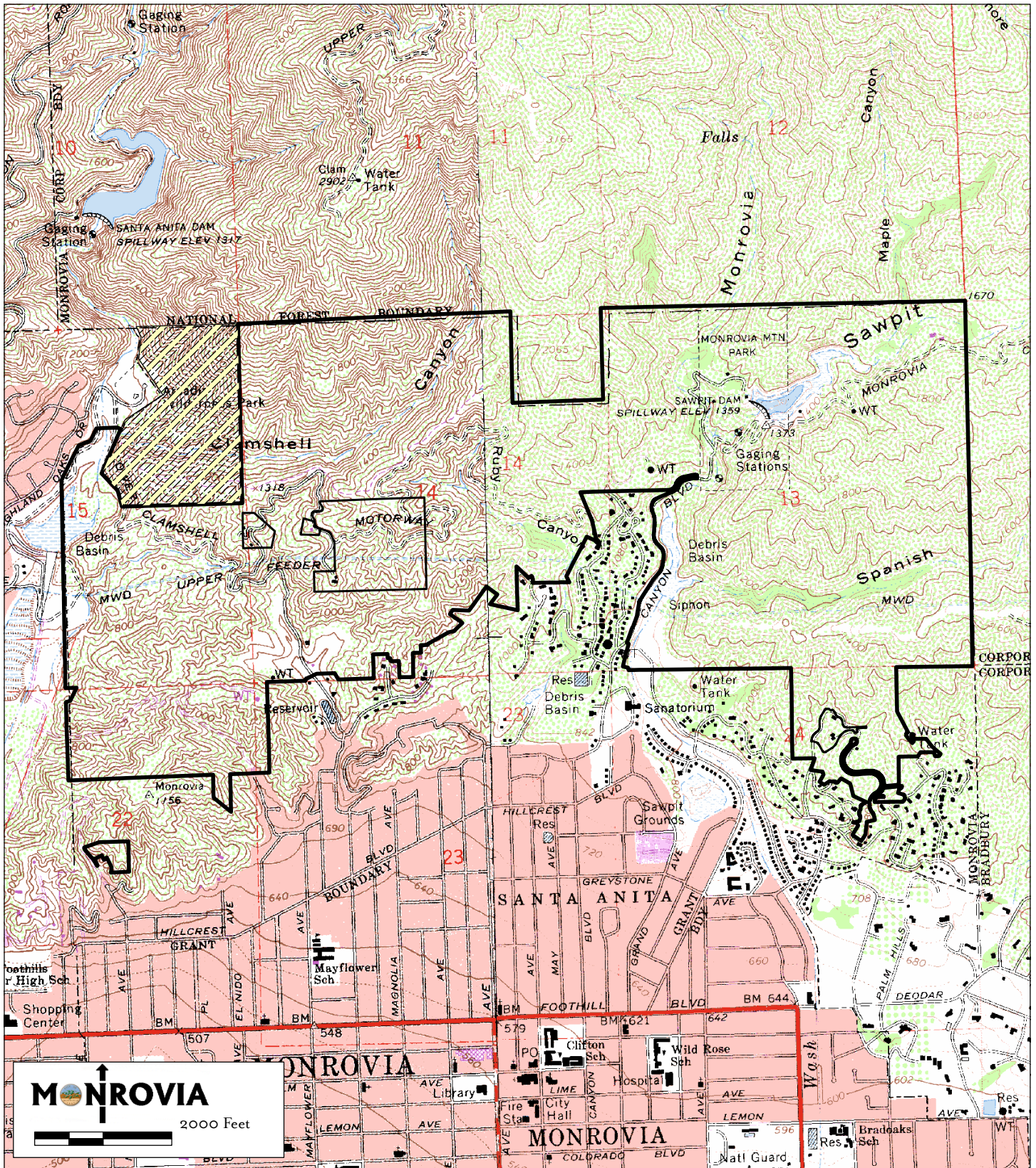




FIGURE 2

-  Project Area
-  Arcadia Wilderness Park

*City of Monrovia  
Hillside Wilderness Preserve  
and Hillside Recreation Area*

Project Location



**Section 7.0** outlines a public outreach and education program for the Project Area. The public outreach and education program will convey information about the Project Area and provide a means to enhance appreciation and encourage protection of the Project Area.

**Section 8.0** defines the approaches for managing fire and enhancing fire safety in the urban wildland interface.

**Section 9.0** outlines the passive recreation system for the Project Area, including short and long-term strategies for providing recreational opportunities with improved public access.

**Section 10.0** provides literature references and other sources of information used to prepare the RMP.

**Section 11.0** provides acronyms and abbreviations used throughout the document.

### **1.3 COMMUNITY INVOLVEMENT**

The planning process leading to the development of this Resource Management Plan began with the dedicated effort of community members during the 1980's, 1990's and early 2000's. A summary of this grassroots effort is provided in Table A – Hillside Wilderness Preserve and Hillside Recreation Area Establishment Process. A summary of the community's involvement in the more recent process that resulted in the RMP is provided below.

The first public meeting was held Saturday, August 5, 2006. This meeting provided: 1) an overview of existing conditions; 2) a review of the previously adopted mission statement, core values and goals; and 3) a summary of project parameters. The presentation was followed by a round table discussion of options for providing public access to the Hillside Wilderness Preserve and Hillside Recreation Area with a focus on the Lower Clamshell Motorway.

On November 4, 2006, a second workshop was held. At this workshop the presentation focused on an assessment of public access alternatives which were evaluated when considering the public access plan. This presentation was followed by an open forum where participants could comment on the access alternatives.

Following these workshops, a questionnaire was distributed city-wide in June and July of 2007 via an internet posting. This questionnaire sought community input on natural resources management considerations and focus for the Project Area. A summary of the questionnaire is included in Appendix A.

The Draft Resource Management Plan (RMP) was presented to the Community Services Commission on September 9, 2008. On January 20, 2009 the Final Hillside Wilderness Preserve and Hillside Recreation Management Plan and California Environmental Quality Act (CEQA) Documentation was presented to the Council for approval. The Resource Management Plan was adopted and the CEQA Initial Study/Mitigated Negative Declaration was certified on January 20, 2009.